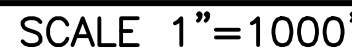


DOWN EAST GREEN

RUBY ROAD (ROUTE 320)
WILLINGTON, CT



1. "MORTGAGE SURVEY PREPARED FOR ROYCE PROPERTIES LLC, RUBY ROAD A.K.A CT. ROUTE 320, WILLINGTON, CT," SCALE: 1"=100', DATE: 6/7/95, BY GARDNER & PETERSON ASSOCIATES, FILED IN BOOK 27, PG. 75

THIS SURVEY HAS BEEN PREPARED PURSUANT TO THE REGULATIONS OF CONNECTICUT STATE AGENCIES SECTIONS 20-300b-1 THROUGH 20-300b-20 AND THE "STANDARDS FOR SURVEYS AND MAPS IN THE STATE OF CONNECTICUT" AS PREPARED AND ADOPTED BY THE CONNECTICUT ASSOCIATION OF LAND SURVEYORS, INC. ON SEPTEMBER 26, 1996 AND AS AMENDED ON OCTOBER 26, 2018.

THIS SURVEY WAS PREPARED TO DEPICT THE EXISTING CONDITIONS OF THE
SUBJECT PROPERTY.

2. THE SUBJECT PARCEL WAS CONVEYED TO RALPH H. TULIS, SUSAN E. TULIS AND STEVEN A. TULIS, THROUGH A CONVEYANCE DATED ON 9/15/2004, AND IS RECORDED IN VOLUME 166, PAGE 972 OF THE WILLINGTON LAND RECORDS.

3. THE SUBJECT PROPERTY IS SHOWN ON THE WILLINGTON TAX ASSESSOR MAP No. 46 AS LOT 26 AND HAS BEEN ASSIGNED ADDRESS OF RUBY ROAD (ROUTE-320), WILLINGTON, CONNECTICUT.

4. TOTAL AREA OF PROPERTY = 3.62± ACRES (157,621± SQUARE FEET)

5. SITE IS LOCATED IN ZONE DC.

6. UNDERGROUND UTILITY, STRUCTURE AND FACILITY LOCATIONS DEPICTED AND NOTED HEREON HAVE BEEN COMPILED, IN PART, FROM RECORD MAPPING SUPPLIED BY THE RESPECTIVE UTILITY COMPANIES OR GOVERNMENTAL AGENCIES, FROM PAROL TESTIMONY AND FROM OTHER SOURCES. THESE LOCATIONS MUST BE CONSIDERED AS APPROXIMATE IN NATURE. ADDITIONALLY, OTHER SUCH FEATURES MAY EXIST ON THE SITE, THE EXISTENCE OF WHICH ARE UNKNOWN TO CHA CONSULTING ENGINEERS. LOCATION OF SUCH EXISTING FEATURES MUST BE FIELD DETERMINED AND VERIFIED BY AN APPROPRIATE AUTHORITY PRIOR TO CONSTRUCTION. CALL BEFORE YOU DIG, 1-800-922-4455.

LINE TABLE		
LINE	BEARING	LENGTH
L1	N65°51'03"W	28.65'
L2	S89°21'24"W	28.78'
L3	N63°48'44"W	30.01'
L4	S79°49'10"W	13.35'
L5	N64°54'15"W	28.67'
L6	S72°21'26"W	11.25'
L7	N64°54'45"W	16.79'

LINE TABLE		
LINE	BEARING	LENGTH
L1	N65°51'03"W	28.65'
L2	S89°21'24"W	28.78'
L3	N63°48'44"W	30.01'
L4	S79°49'10"W	13.35'
L5	N64°54'15"W	28.67'
L6	S72°21'26"W	11.25'
L7	N64°54'45"W	16.79'

PROPERTY LINE	_____
ABUTTERS LINE	_____
EDGE OF PAVEMENT	-----
EDGE OF GRAVEL	-----
EXISTING CONTOUR	----- XXXX
STONE WALL	-----
RETAINING WALL	-----
LIMITS OF INLAND WETLANDS	----- WFE
FENCE	-----
TREE LINE	-----
OVERHEAD WIRES	-----
NOW OR FORMERLY	-----
UTILITY POLE	-----
BOUNDARY POINT	-----
DRILL HOLE	-----
IRON MONUMENT	-----
CONNECTICUT HIGHWAY	-----
DEPARTMENT MONUMENT(CHD)	-----
IRON PIPE	-----
IRON ROD	-----
RAIL ROAD SPIKE	-----
WELL	-----
WATER VALVE	-----

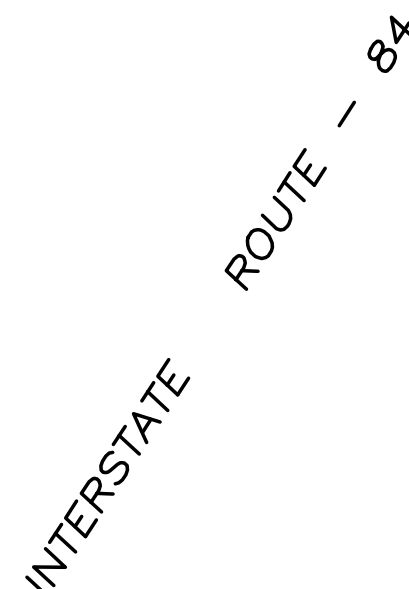
EXISTING CONDITIONS

Designed By: ---	Drawn By: ZBC	Checked By CB
---------------------	------------------	------------------

Issue Date:	Project No:	Scale:
08/31/2022	074742	1" = 40'

Drawing No.:

SHEET 1



MAO 42 LOT 45
N/F
ROYCE PROPERTIES LLC
VOL. 124 / PG. 4

ACCESS EASEMENT
VOL. 75 / PG. 212

TO MY KNOWLEDGE AND BELIEF, THIS MAP IS SUBSTANTIAL
CORRECT AS NOTED HEREON.


CRAIG P. BIGGER, L.S. #70413

8/31/2022

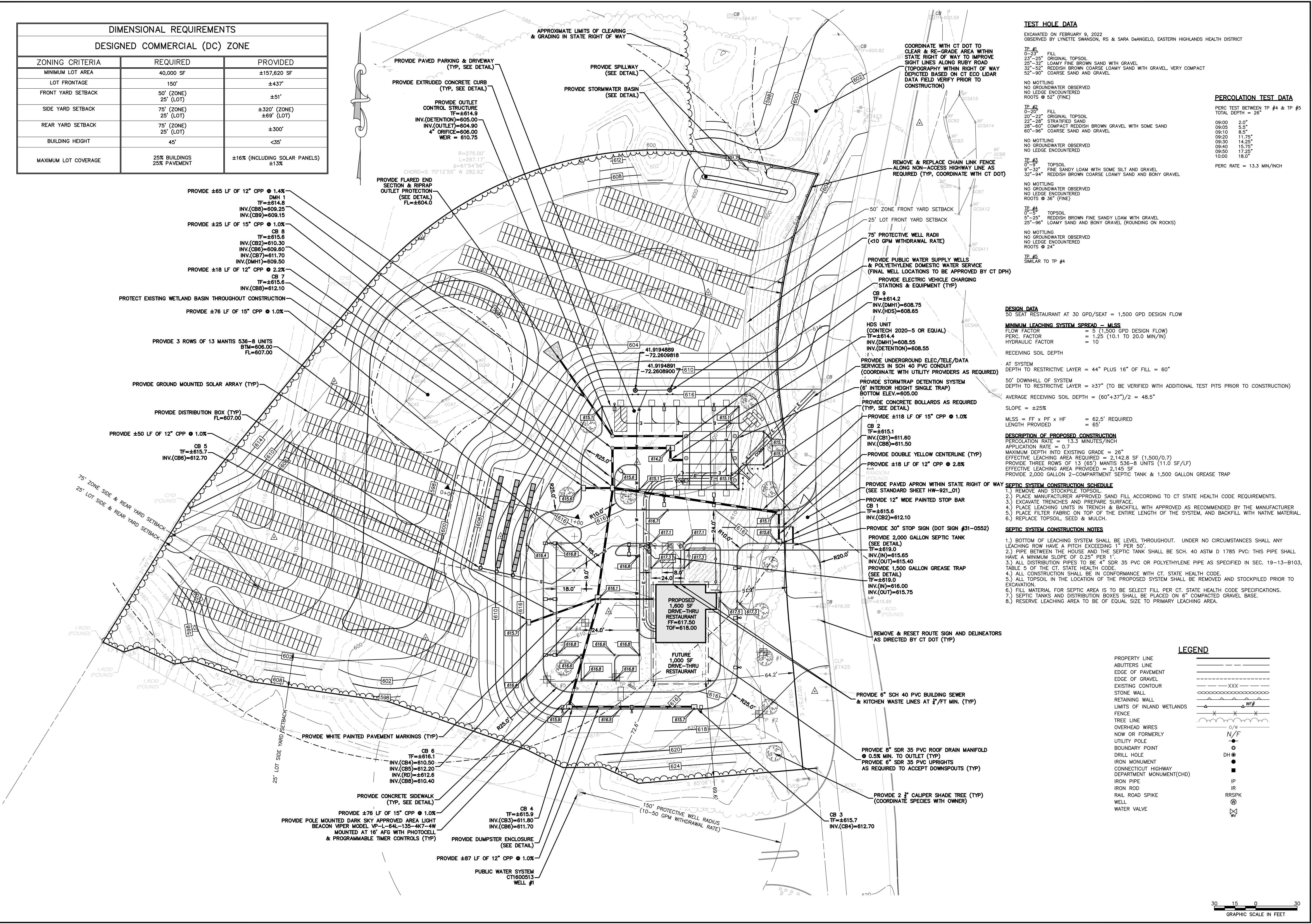
DATE _____



40 20 0 40

GRAPHIC SCALE IN FEET

DIMENSIONAL REQUIREMENTS		
DESIGNED COMMERCIAL (DC) ZONE		
ZONING CRITERIA	REQUIRED	PROVIDED
MINIMUM LOT AREA	40,000 SF	±157,620 SF
LOT FRONTAGE	150'	±437'
FRONT YARD SETBACK	50' (ZONE) 25' (LOT)	±51'
SIDE YARD SETBACK	75' (ZONE) 25' (LOT)	±320' (ZONE) ±69' (LOT)
REAR YARD SETBACK	75' (ZONE) 25' (LOT)	±300'
BUILDING HEIGHT	45'	<35'
MAXIMUM LOT COVERAGE	25% BUILDINGS 25% PAVEMENT	±16% (INCLUDING SOLAR PANELS) ±13%



CHA

101 East River Drive, 1st Floor
East Hartford, CT 06108
860-885-1055 | www.chacompanies.com

SITE DEVELOPMENT PLAN
PREPARED FOR:

DOWN EAST GREEN

RUBY ROAD (RT 320),
WILLINGTON, CONNECTICUT

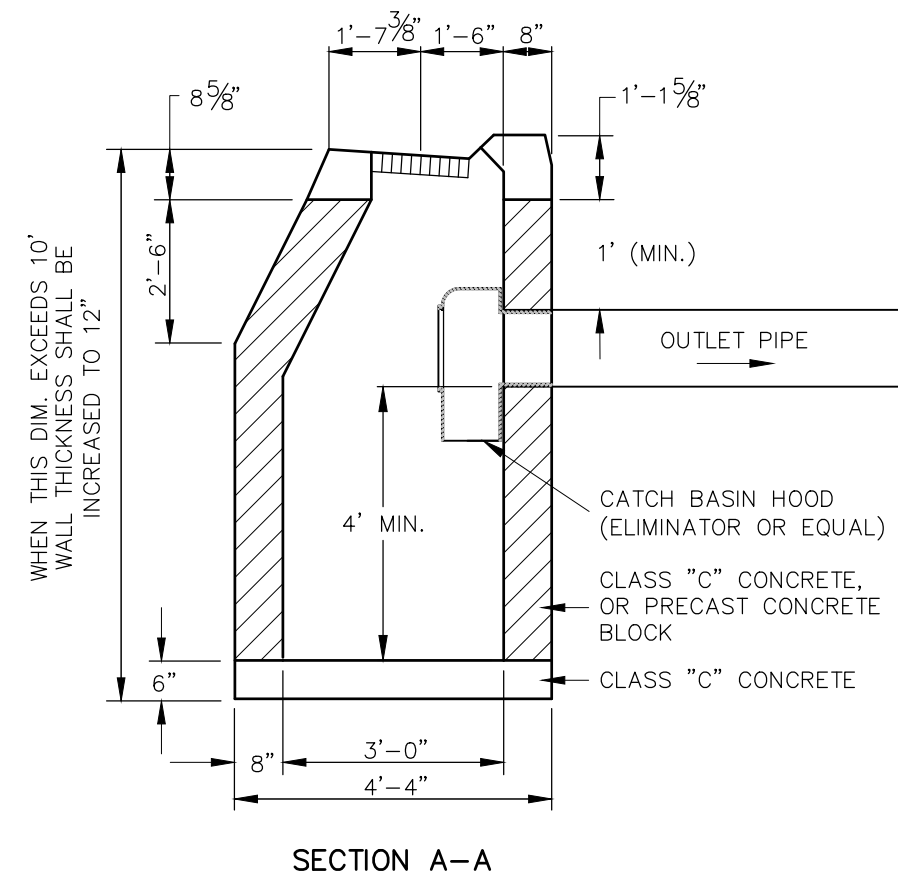
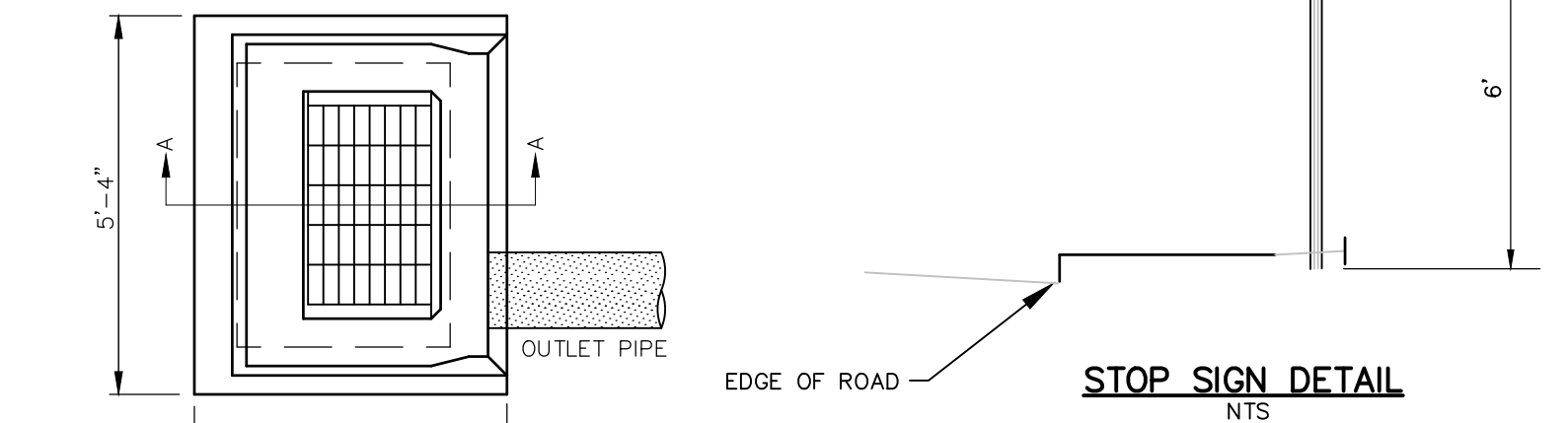
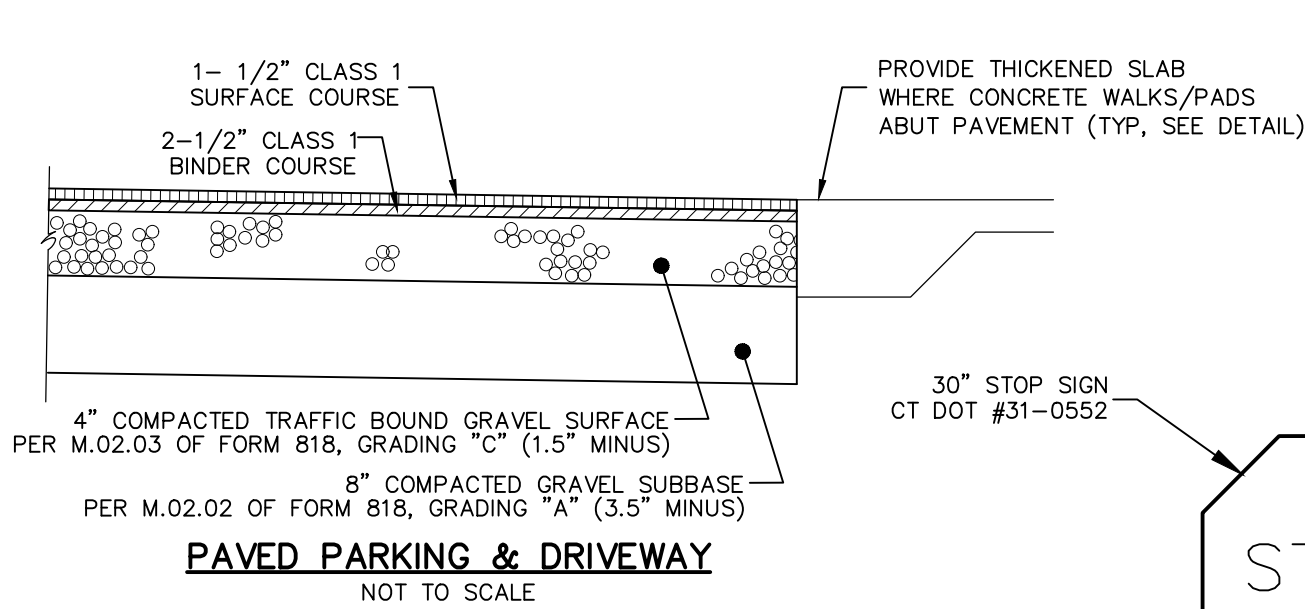
IT IS A VIOLATION OF LAW FOR ANY PERSON, UNLESS THEY ARE ACTING UNDER THE DIRECTION OF A LICENSED PROFESSIONAL ENGINEER, ARCHITECT, LANDSCAPE ARCHITECT OR LAND SURVEYOR TO ALTER AN ITEM IN ANY WAY IF AN ITEM BEARING THE STAMP OF A LICENSED PROFESSIONAL IS ALTERED. THE ALTERING ENGINEER, ARCHITECT, LANDSCAPE ARCHITECT OR LAND SURVEYOR SHALL STAMP THE DOCUMENT AND INCLUDE THE NOTATION "ALTERED BY" FOLLOWED BY THEIR SIGNATURE, THE DATE OF SUCH ALTERATION, AND A SPECIFIC DESCRIPTION OF THE ALTERATION.

No.	Submittal / Revision	App'd.	By	Date
1	CT DOT COMMENTS	PMP		11/30/2022
2	CT DOT COMMENTS	PMP		01/31/2023
3	DRIVE-THRU	PMP		11/29/2023

Designed By: PMP
Drawn By: PMP
Issue Date: 08/31/2022
Project No: 074742
Scale: 1" = 30'

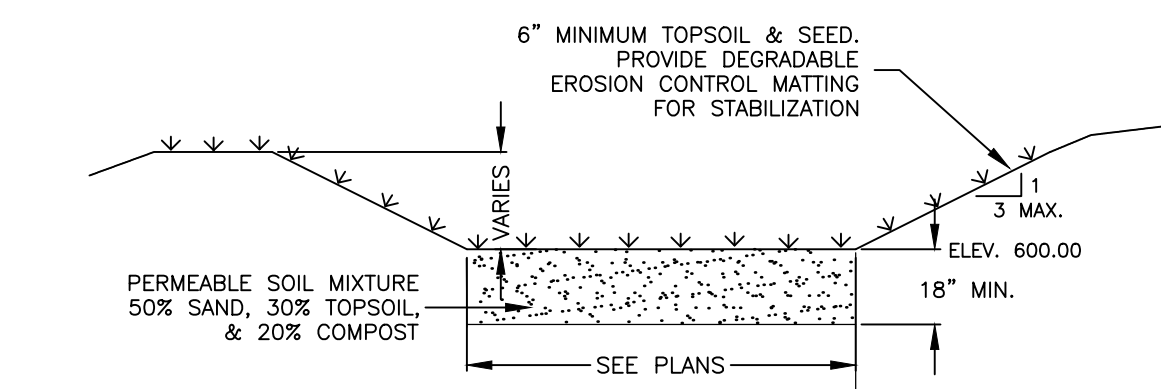
SITE PLAN

Drawing No.: SHEET 2



TYPE "C" CATCH BASIN
NOT TO SCALE

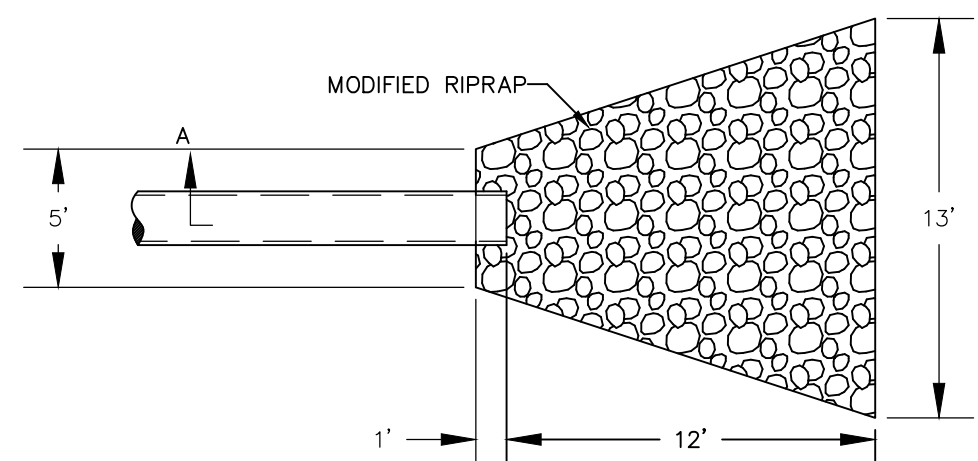
NOTE: ALL CATCH BASINS SHALL BE PROVIDED WITH A HOODED OUTLET.



STORMWATER BASIN
NOT TO SCALE

NOTE:

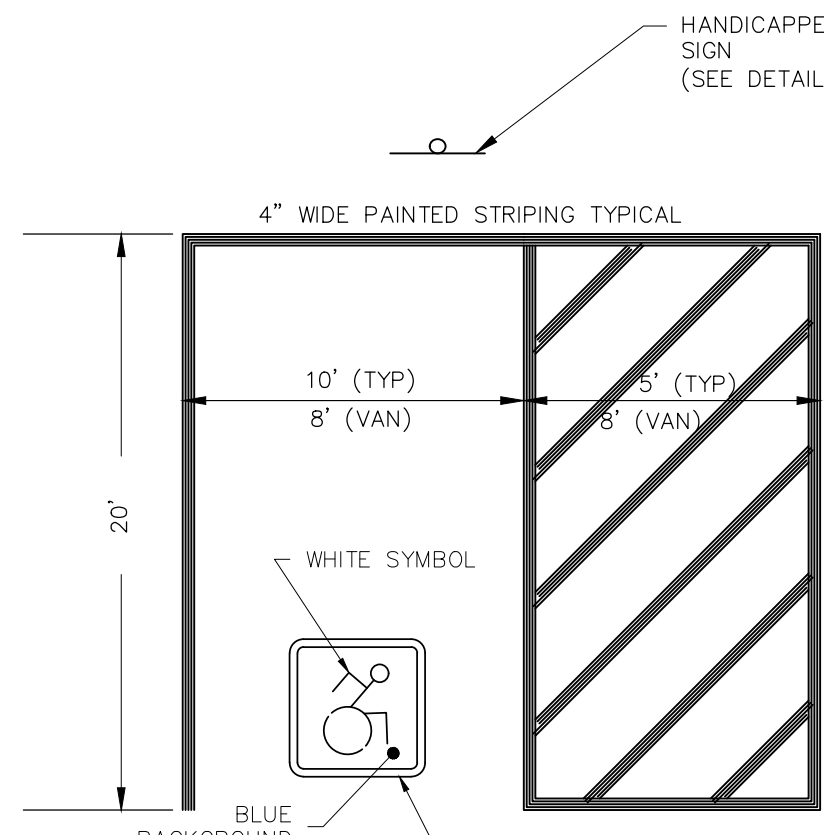
- 1.) CONTRACTOR MAY INCLUDE NATIVE SAND MATERIAL FROM EXCAVATION IN THE PERMEABLE SOIL MIXTURE. MATERIAL MUST BE EXCAVATED, MIXED WITH LOAM & COMPOST TO FORM A HOMOGENEOUS BLEND, AND REPLACED TO GRADE.
- 2.) PERMEABLE SOIL MIXTURE SHALL NOT BE COMPACTED AND THE ENTIRE WATER QUALITY BASIN SHALL BE PROTECTED FROM HEAVY EQUIPMENT TRAFFIC THROUGHOUT CONSTRUCTION.
- 3.) THE CONTRACTOR SHALL BE LIABLE FOR THE REPLACEMENT OF THE PERMEABLE SOIL MIXTURE IF E&S CONTROLS ARE NOT INSTALLED & MAINTAINED AS INDICATED.
- 4.) SEED BASIN WITH NEW ENGLAND WETMIX BY NEW ENGLAND WETLAND PLANTS, INC. OR APPROVED EQUAL.
- 5.) PROVIDE 2" PLUG PLANTINGS AT $\pm 3'$ ON CENTER WITHIN BOTTOM OF STORMWATER BASIN. PLANTINGS SHALL BE A MIXTURE OF: FOX SEDGE, BLUNT BROOM SEDGE, HOP SEDGE, GREEN BULRUSH, CREEPING SPIKE RUSH, AND SOFT RUSH, TOTALING 300 PLANTINGS.



TYPE A RIPRAP APRON
NTS

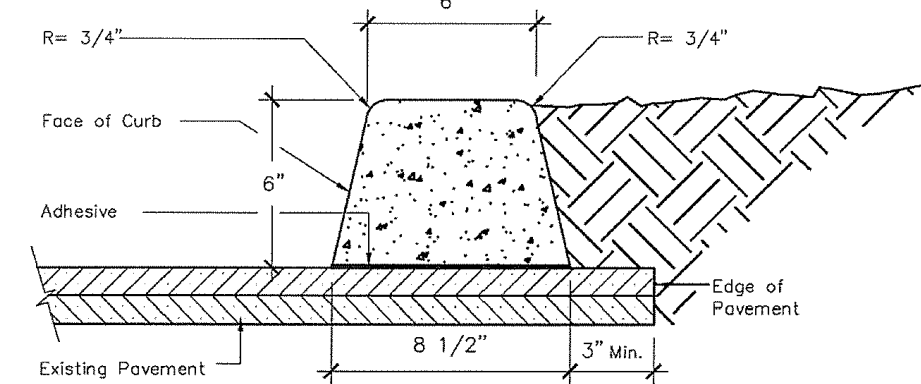
NOTE:

PROVIDE REINFORCED CONCRETE FLARED END SECTION AT ALL OUTLETS. PROVIDE CONCRETE ENCASMENT AT JOINT



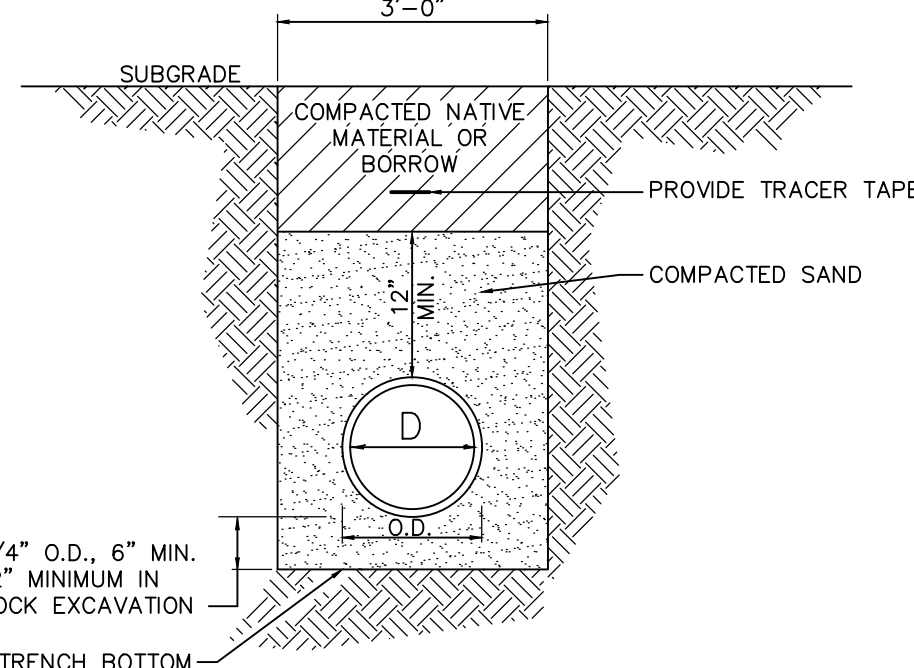
HANDICAP PARKING LAYOUT
NOT TO SCALE

- NOTES:
1. VAN ACCESSIBLE SPACES REQUIRE AN 8' SPACE WITH AN 8' HATCHED AREA.
 2. ADJACENT SPACES CAN "SHARE" HATCHED ACCESS AISLES
 3. MAXIMUM SLOPE IN ANY DIRECTION WITHIN PARKING SPACE & HATCHED AREA IS 2%



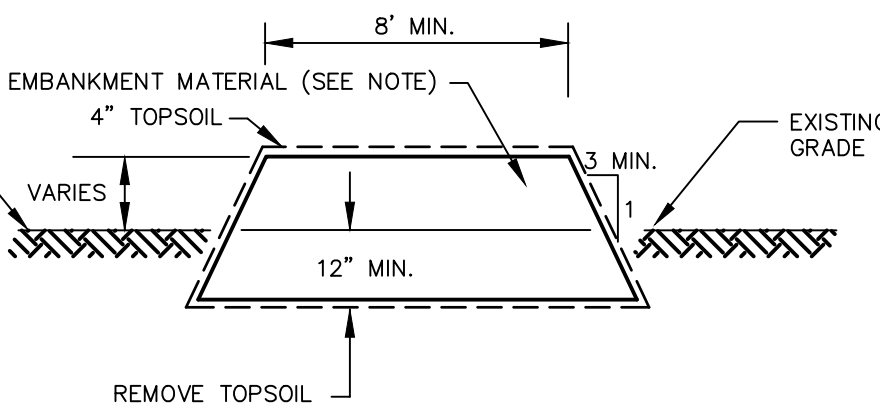
EXTRUDED CONCRETE CURBING DETAIL

NOTE: USE FINISH COURSE STANDARD MOLD 6" BY CONCRETE CRAFTERS OF CT, INC., NAUGATUCK, CT.



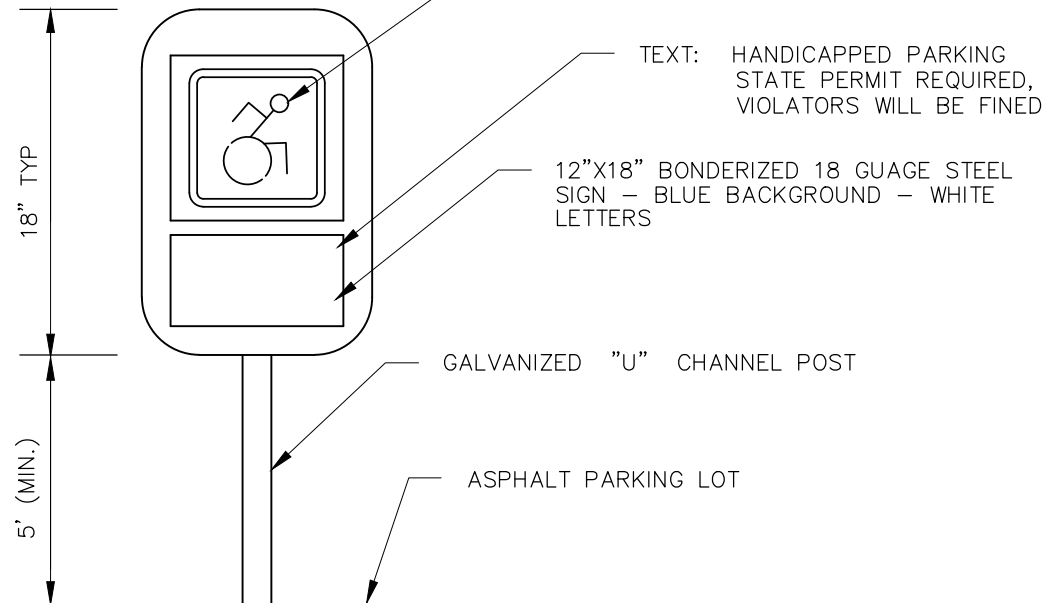
TRENCH SECTION FOR TYPICAL WATER SERVICE TRENCH
NOT TO SCALE

NOTE: BACKFILL MATERIAL TO BE PLACED IN 12" MAXIMUM LIFTS & COMPACTED TO 95% MAXIMUM DRY DENSITY (AS DETERMINED BY THE MODIFIED PROCTOR METHOD)

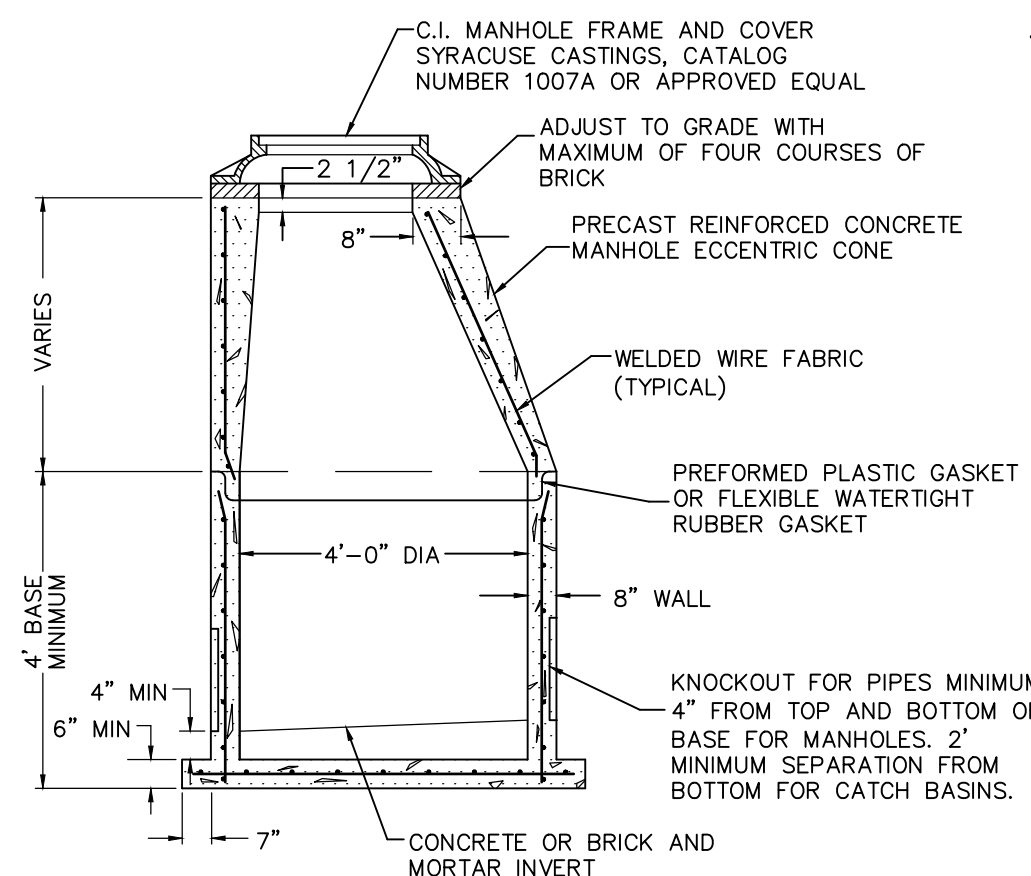


EARTH BERM DETAIL
NTS

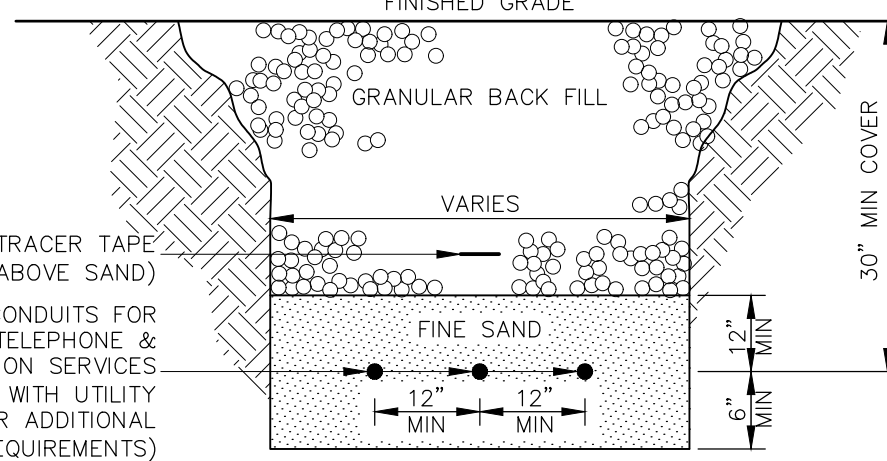
NOTE: EMBANKMENT MATERIAL SHALL CONTAIN AT LEAST 15% PASSING THE #200 SIEVE AND NOT MORE THAN 50% PASSING THE #200 SIEVE. NO STONES LARGER THAN 6 INCHES SHALL BE ALLOWED WITHIN THE COMPACTED EMBANKMENT. WITHIN TWO FEET OF ANY STRUCTURE, THE MAXIMUM SIZE SHALL BE 3 INCHES. CONSTRUCTION SHALL NOT TAKE PLACE DURING COLD PERIODS WHERE TEMPERATURES ARE CONSISTENTLY LOWER THAN 40 DEGREES FAHRENHEIT. EMBANKMENT MATERIAL TO BE COMPACTED IN LIFTS TO 95% MAXIMUM DRY DENSITY.



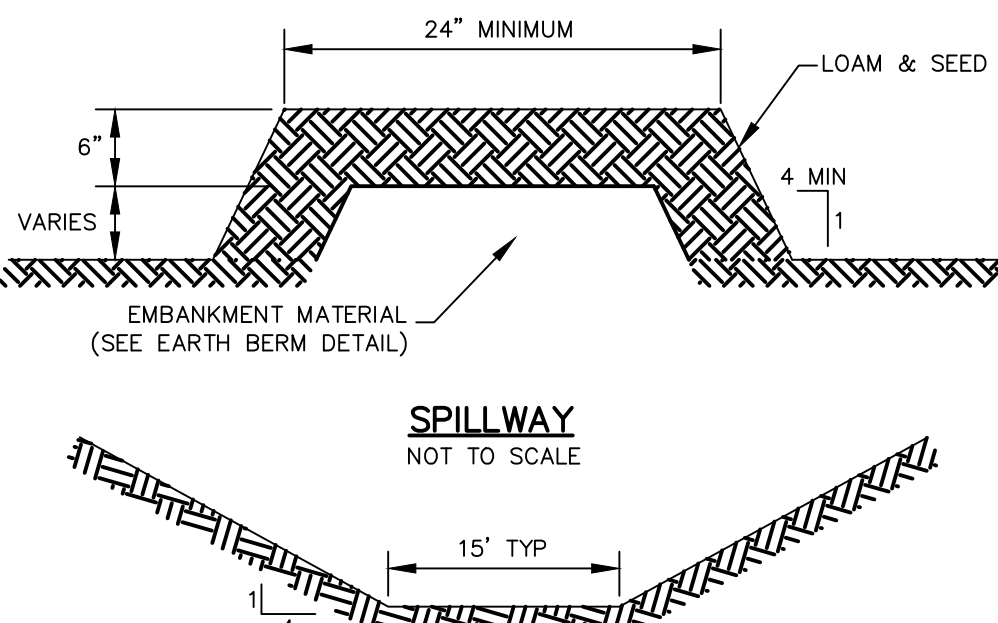
HANDICAPPED PARKING SIGN
NOT TO SCALE



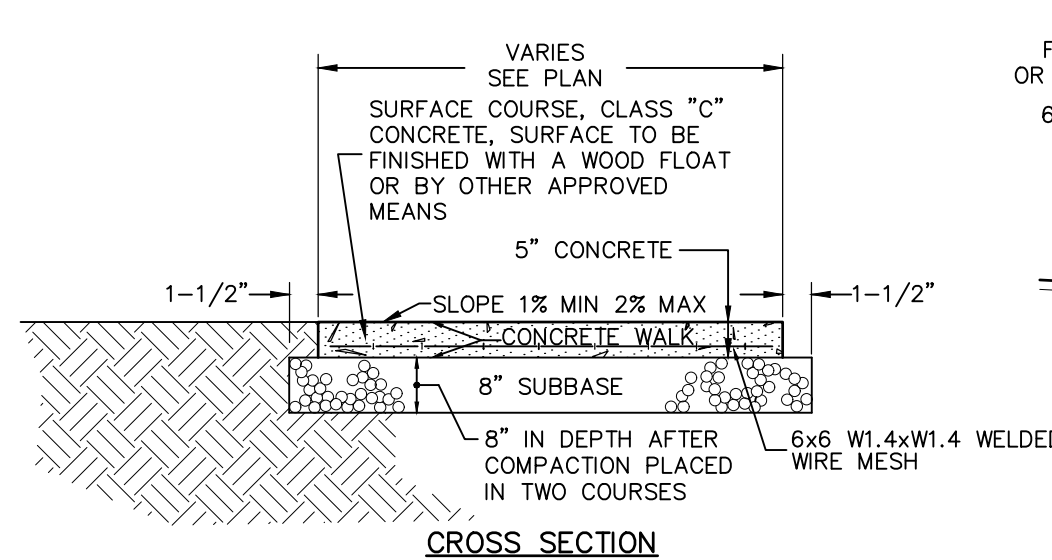
DRAINAGE MANHOLE CROSS SECTION
NOT TO SCALE



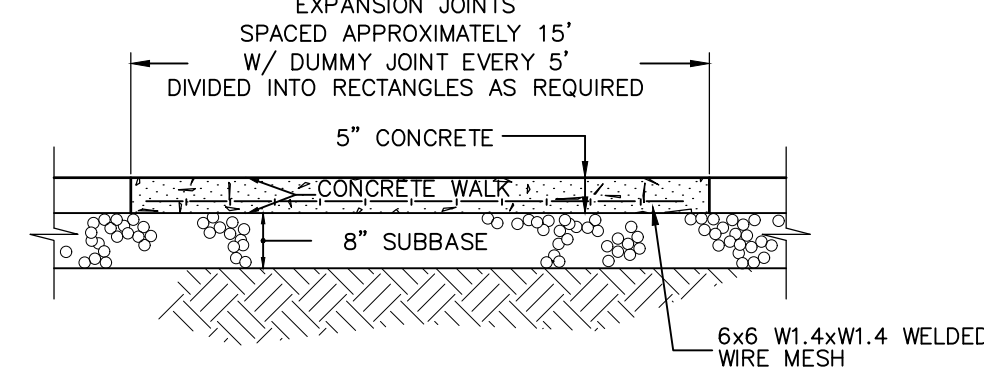
TRENCH SECTION FOR UTILITY CONDUITS
NOT TO SCALE



SPILLWAY CROSS SECTION
NOT TO SCALE

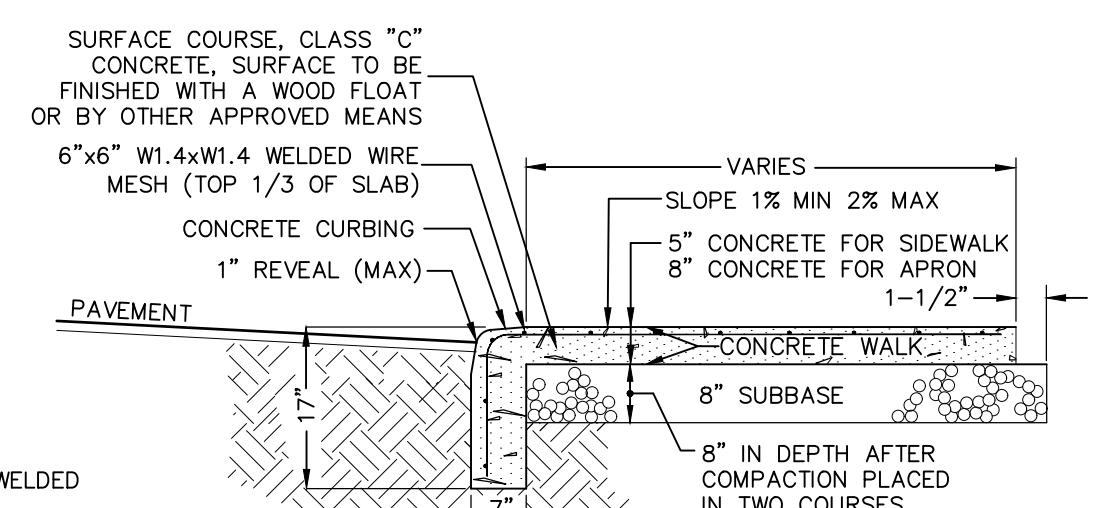


CROSS SECTION

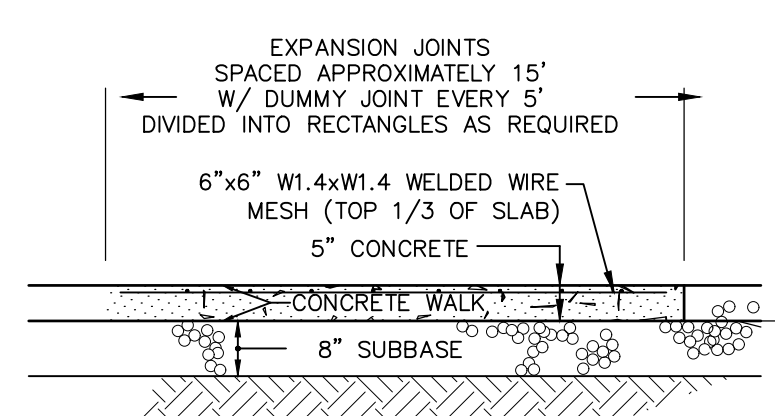


LONGITUDINAL SECTION

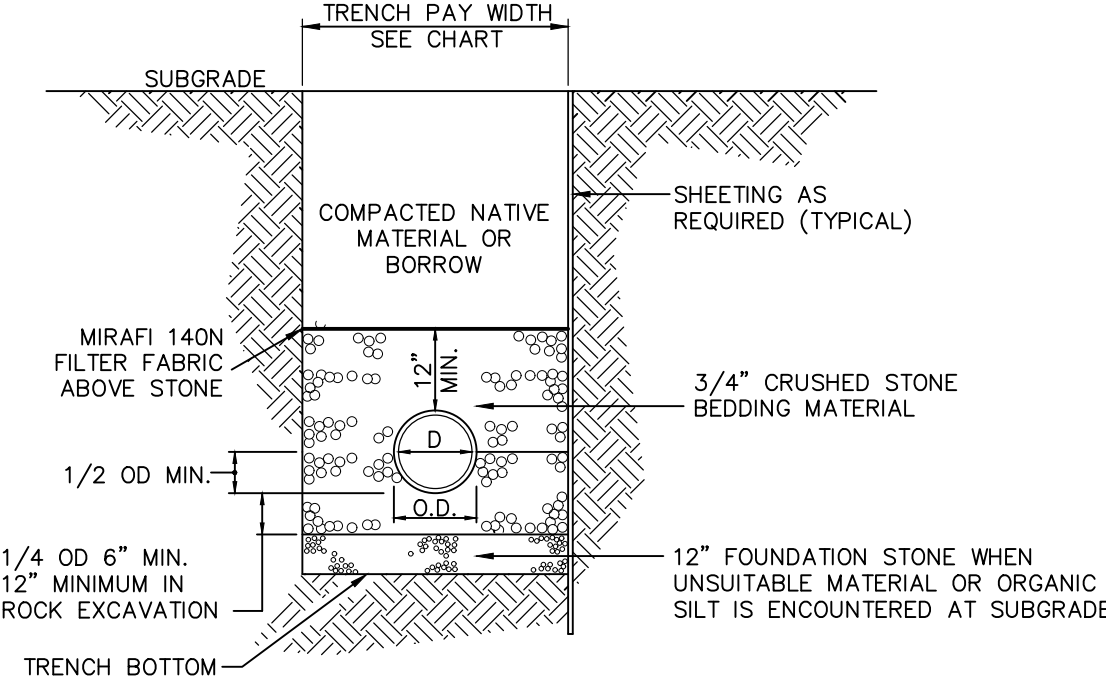
CONCRETE SIDEWALK
NOT TO SCALE



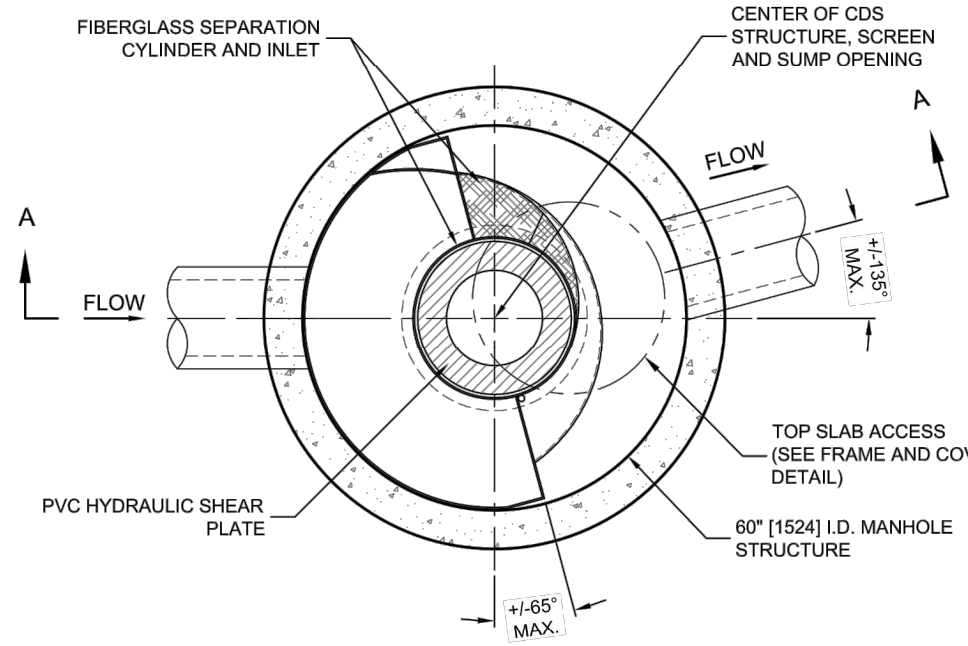
DEPRESSED CURB CROSS SECTION



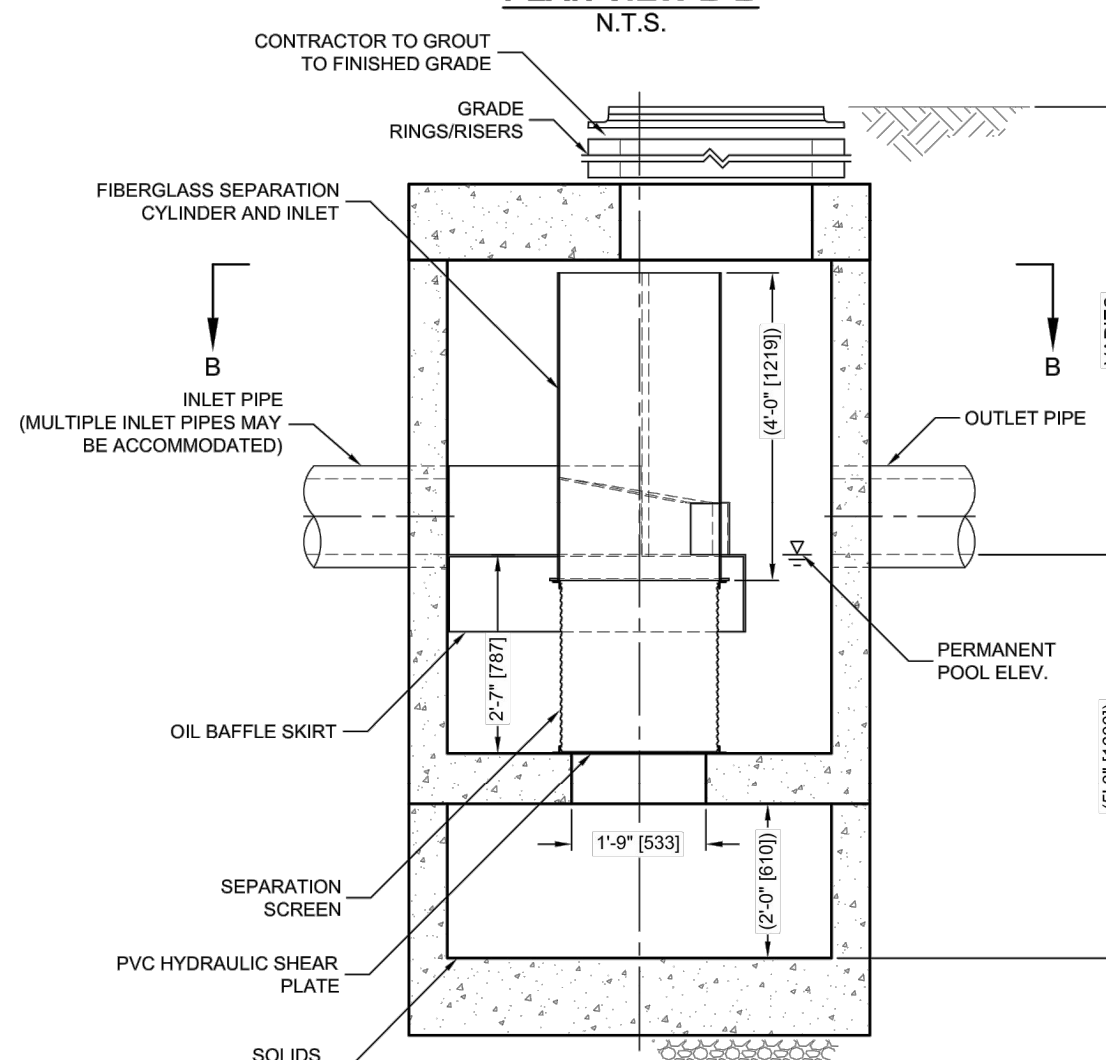
LONGITUDINAL SECTION
CONCRETE SIDEWALK WITH MONOLITHIC CONCRETE CURBING
NOT TO SCALE



TRENCH SECTION FOR STORM DRAINS
NOT TO SCALE



PLAN VIEW B-B
N.T.S.



ELEVATION A-A
N.T.S.

CDS 2020-5 HYDRODYNAMIC SEPARATOR
NOT TO SCALE

SITE DEVELOPMENT PLAN
PREPARED FOR:

DOWN EAST GREEN

RUBY ROAD (RT 320),
WILLINGTON, CONNECTICUT

IT IS A VIOLATION OF LAW FOR ANY PERSON, UNLESS THEY ARE ACTING UNDER THE DIRECTION OF A LICENSED PROFESSIONAL ENGINEER, ARCHITECT, LANDSCAPE ARCHITECT OR LAND SURVEYOR TO ALTER AN ITEM IN ANY WAY. IF AN ITEM BEARING THE STAMP OF A LICENSED PROFESSIONAL IS ALTERED, THE ALTERING ENGINEER, ARCHITECT, LANDSCAPE ARCHITECT OR LAND SURVEYOR SHALL STAMP THE DOCUMENT AND INCLUDE THE NOTATION "ALTERED BY" FOLLOWED BY THEIR SIGNATURE, THE DATE OF SUCH ALTERATION, AND A SPECIFIC DESCRIPTION OF THE ALTERATION.

No.	Submittal / Revision	App'd.	By	Date
1	CT DOT COMMENTS	PMP		11/30/2022
2	CT DOT COMMENTS	PMP		01/31/2023
3	DRIVE-THRU	PMP		11/29/2023

CONSTRUCTION DETAILS

Designed By: PMP	Drawn By: PMP	Checked By: PMP
Issue Date: 08/31/2022	Project No: 074742	Scale: AS NOTED

Drawing No.:

SHEET 3

No.	Submittal / Revision	App'd.	By	Date
1	CT DOT COMMENTS	PMP		11/30/2022
2	CT DOT COMMENTS	PMP		01/31/2023
3	DRIVE-THRU	PMP		11/29/2023

CONSTRUCTION DETAILS

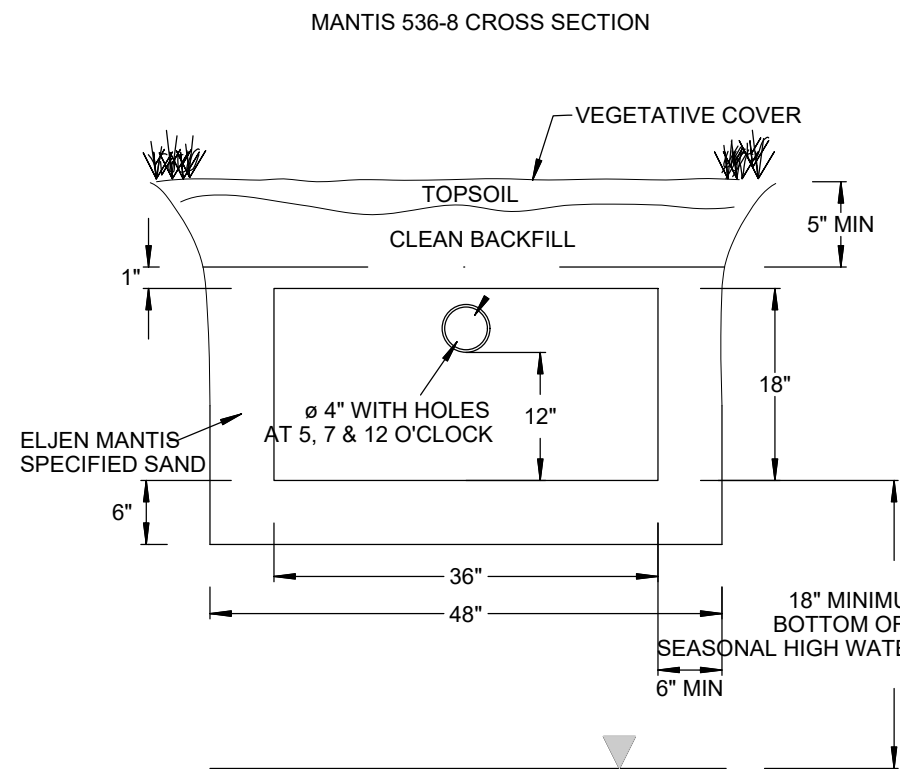
Designed By: PMP	Drawn By: PMP	Checked By: PMP
Issue Date: 08/31/2022	Project No.: 074742	Scale: AS NOTED

SEPTIC SYSTEM FILL MATERIAL SPECIFICATIONS

- 1.) THE FILL SHALL NOT CONTAIN ANY MATERIAL LARGER THAN THREE(3) INCHES.
- 2.) UP TO 45% OF THE DRY WEIGHT OF THE REPRESENTATIVE SAMPLE MAY BE RETAINED ON THE #4 SIEVE (THIS IS THE GRAVEL PORTION OF THE SAMPLE).
- 3.) THE MATERIAL THAT PASSES THE #4 SIEVE IS THEN REWEIGHED AND THE SIEVE ANALYSIS STARTED
- 4.) THE REMAINING SAMPLE SHALL MEET THE FOLLOWING GRADATION CRITERIA.

SIEVE SIZE	PERCENT PASSING	
	WET SIEVE	DRY SIEVE
#4	100%	100%
#10	70%-100%	70%-100%
#40	10%-50% *	10%-75%
#100	0%-20%	0%-5%
#200	0%-5%	0%-2.5%

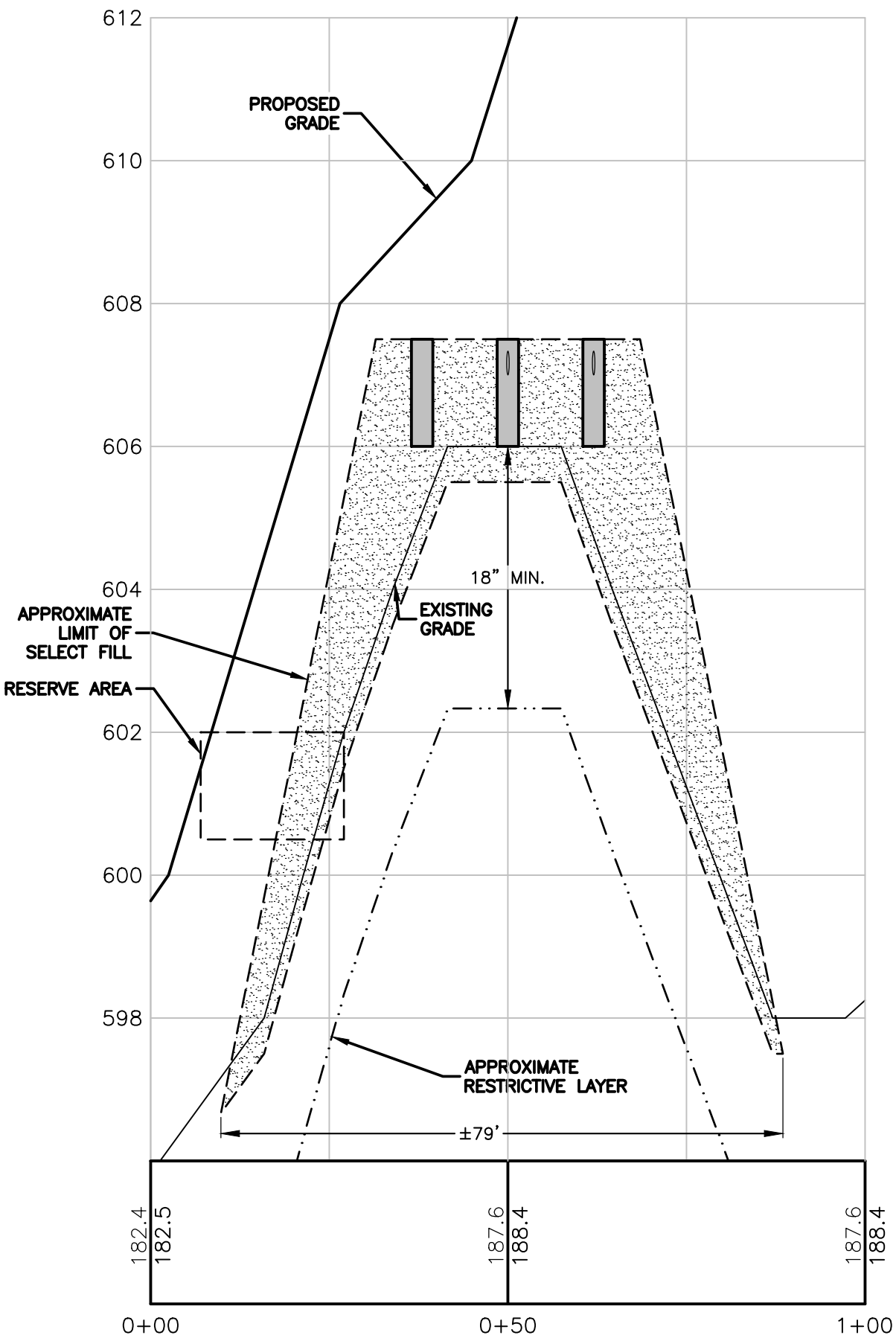
*NOTE: PERCENT PASSING THE #40 SIEVE CAN BE INCREASED TO NO GREATER THAN 75% IF THE PERCENT PASSING THE #100 SIEVE DOES NOT EXCEED 10% AND THE #200 DOES NOT EXCEED 5%



NOTE: VENTING REQUIRED WHEN MORE THAN 18" OF COVER AS MEASURED FROM THE TOP OF THE UNIT TO FINISHED GRADE

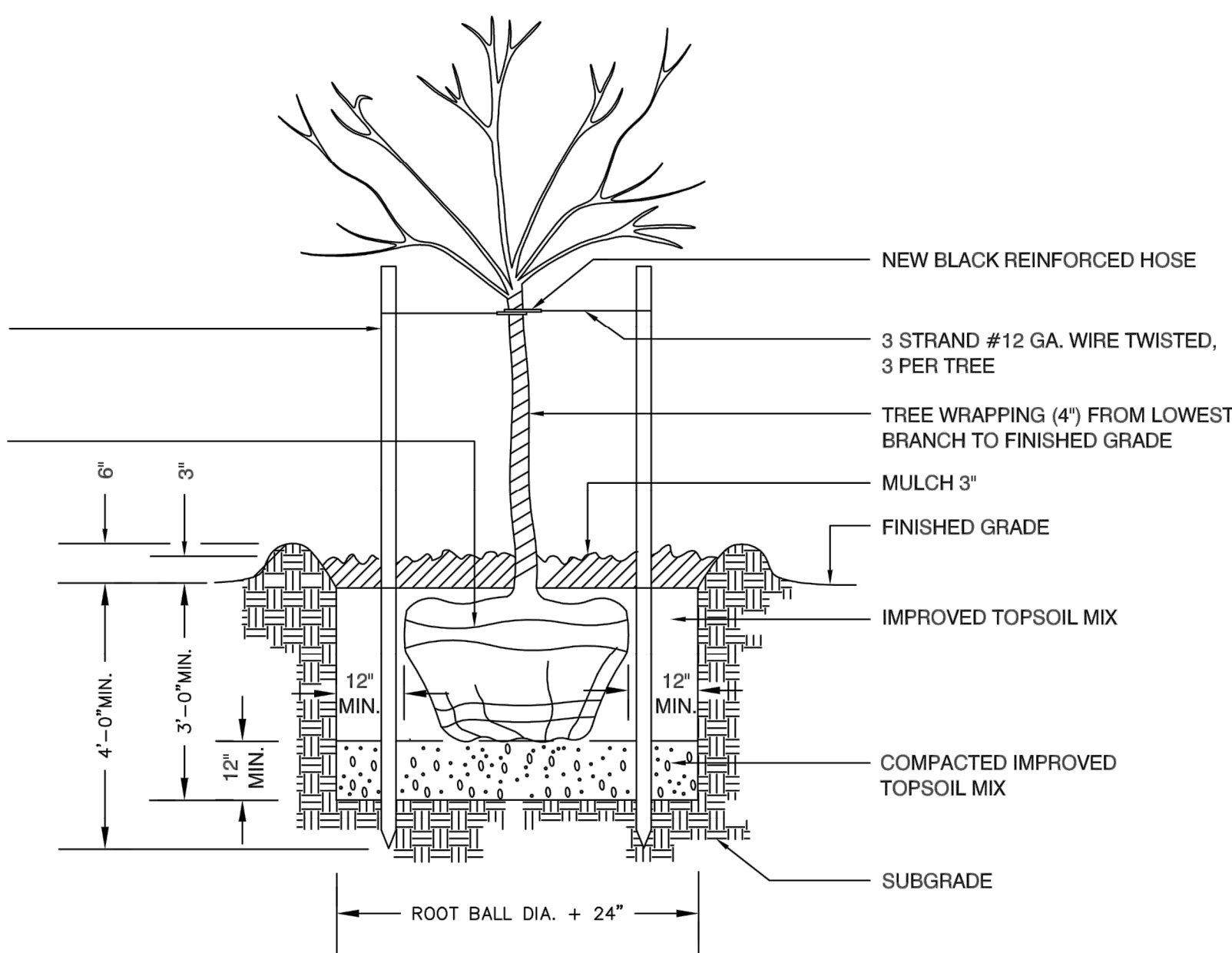
MANTIS 536-8 UNIT

NOT TO SCALE



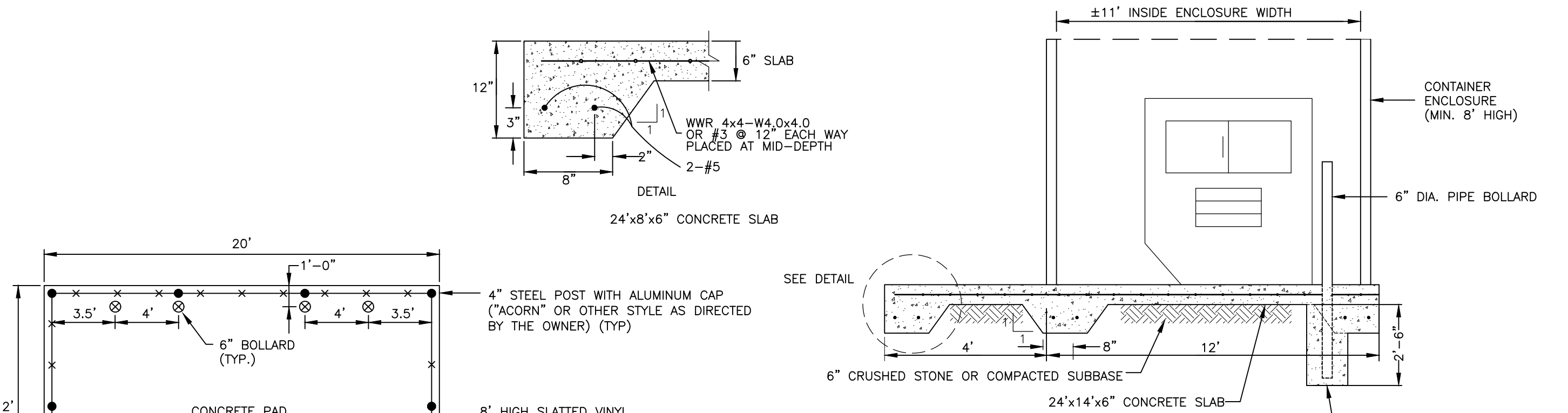
SYSTEM PROFILE

SCALE:
HOR. 1"=20'
VERT. 1"=2'



DECIDUOUS TREE PLANTING

NOT TO SCALE

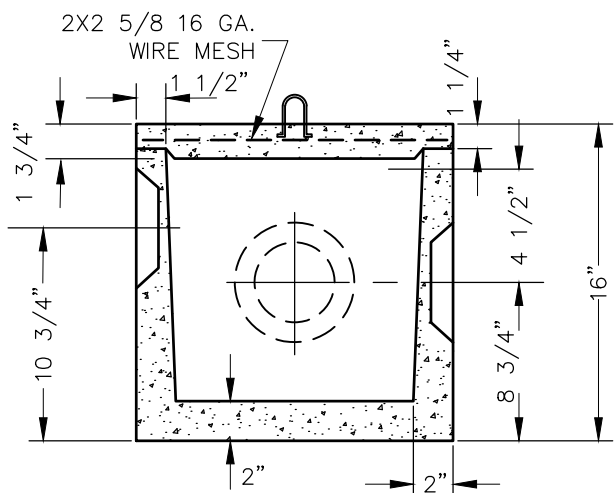


DUMPSTER PAD SLAB SECTION

NOT TO SCALE

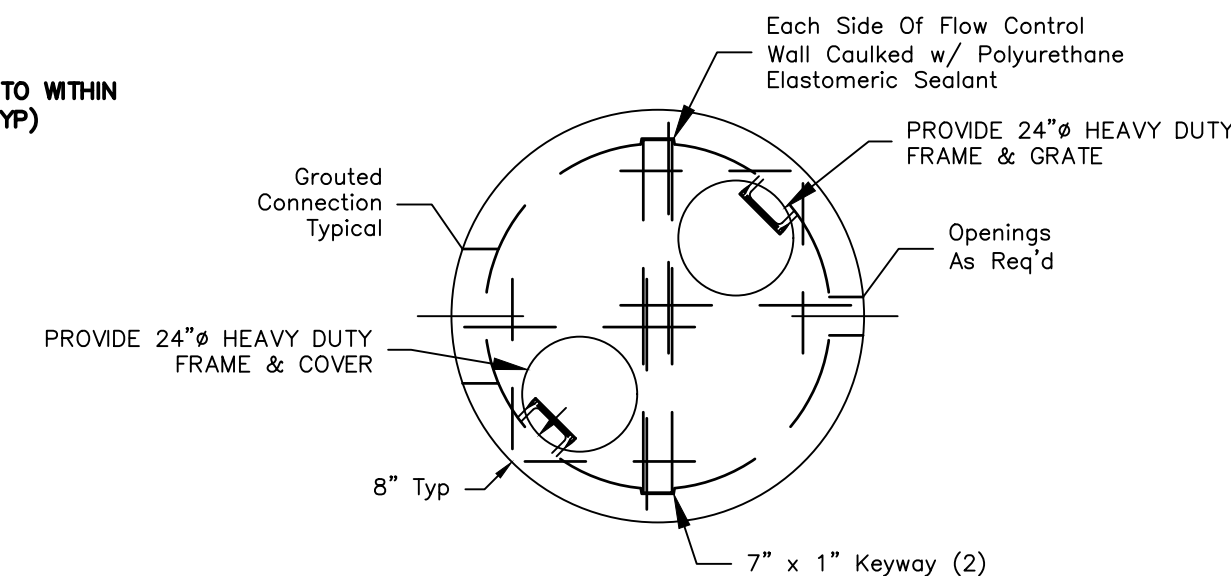
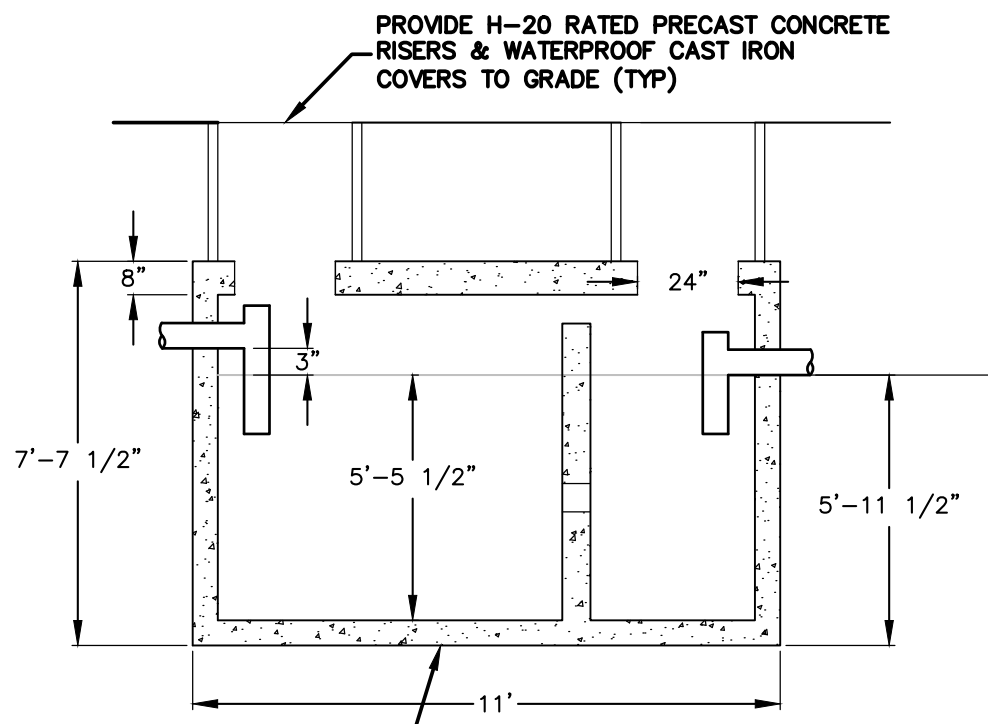
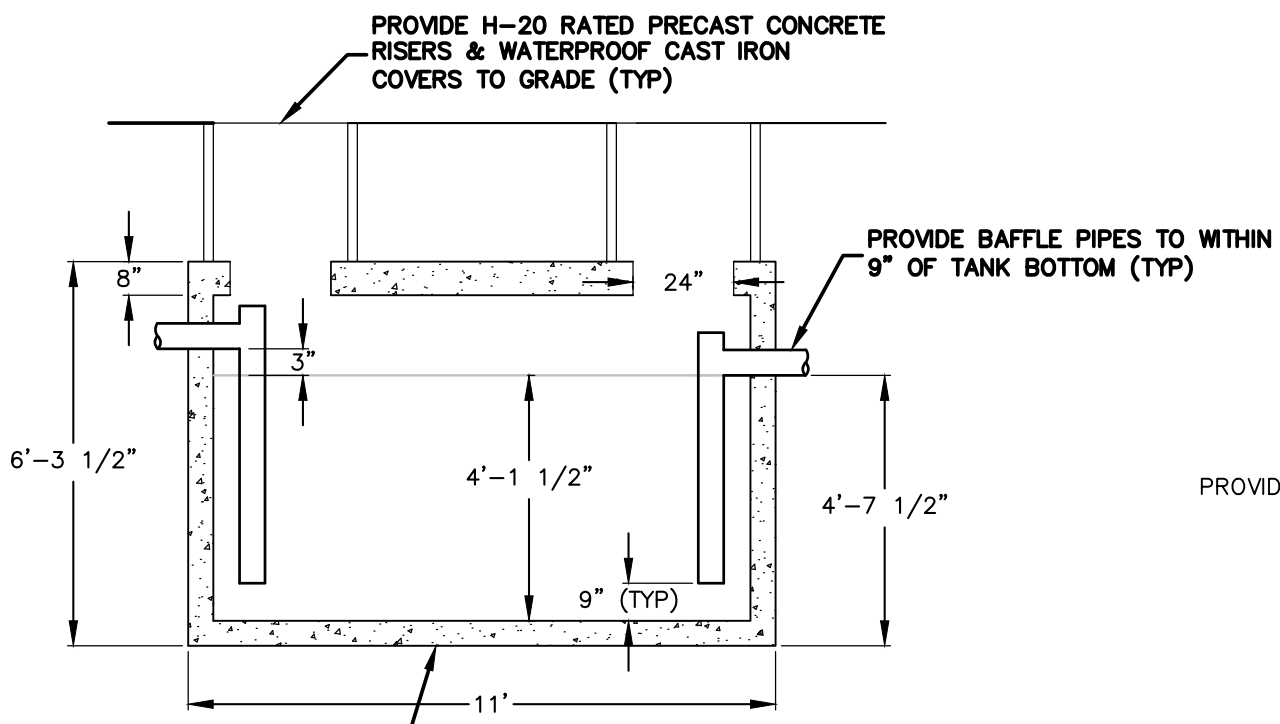
NOTES:

- 1.) GATE POSTS AND BOLLARDS SHALL BE SET IN PLACE PRIOR TO CASTING SLAB.
- 2.) ENTIRE SLAB SHALL BE CAST ON MINIMUM OF 6" CRUSHED STONE OR COMPACTED GRAVEL.
- 3.) CONCRETE SHALL HAVE A MINIMUM COMPRESSIVE STRENGTH OF 3000 PSI AND SHALL BE PLACED IN ACCORDANCE WITH ACI 318-02.
- 4.) WELDED WIRE REINFORCEMENT SHALL CONFORM TO ASTM A 185.
- 5.) STEEL REINFORCING SHALL HAVE A YIELD STRENGTH OF 60ksi.



STANDARD D-BOX

NOT TO SCALE

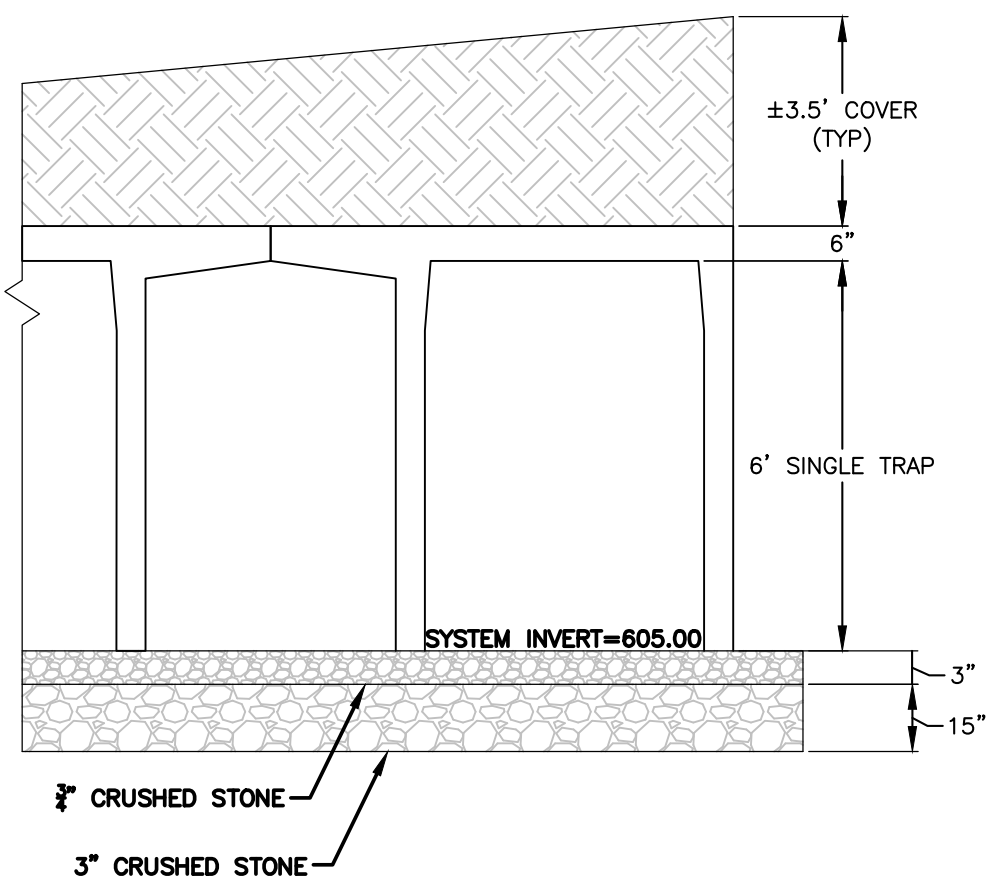


OUTLET CONTROL DEVICE

NOT TO SCALE

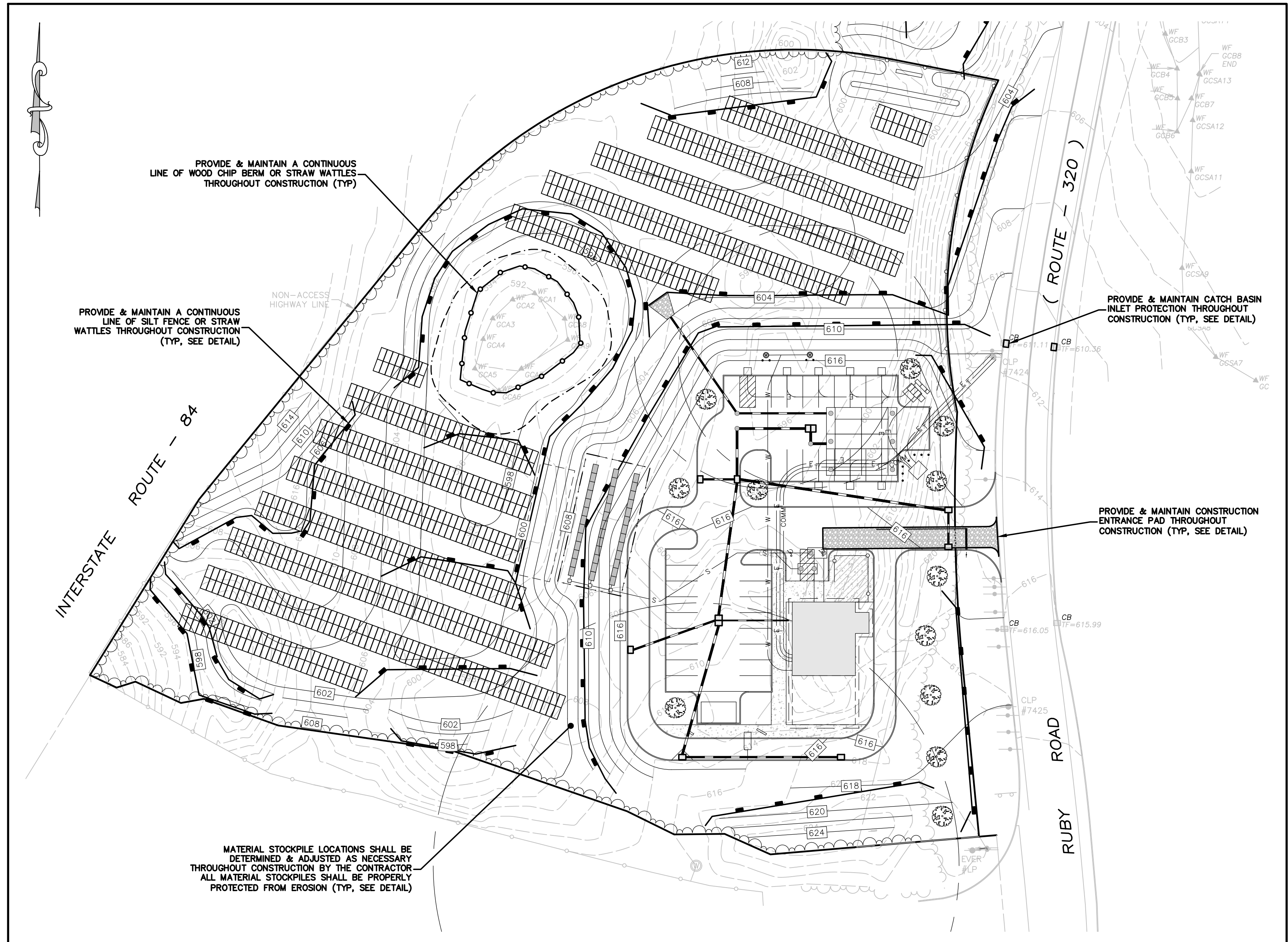
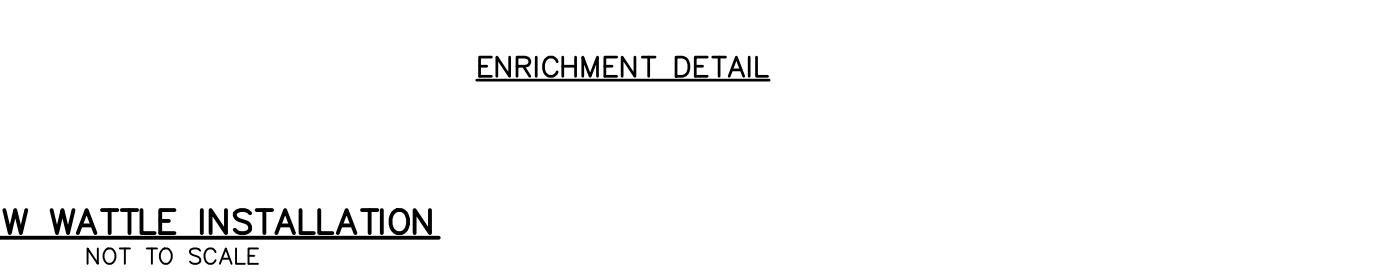
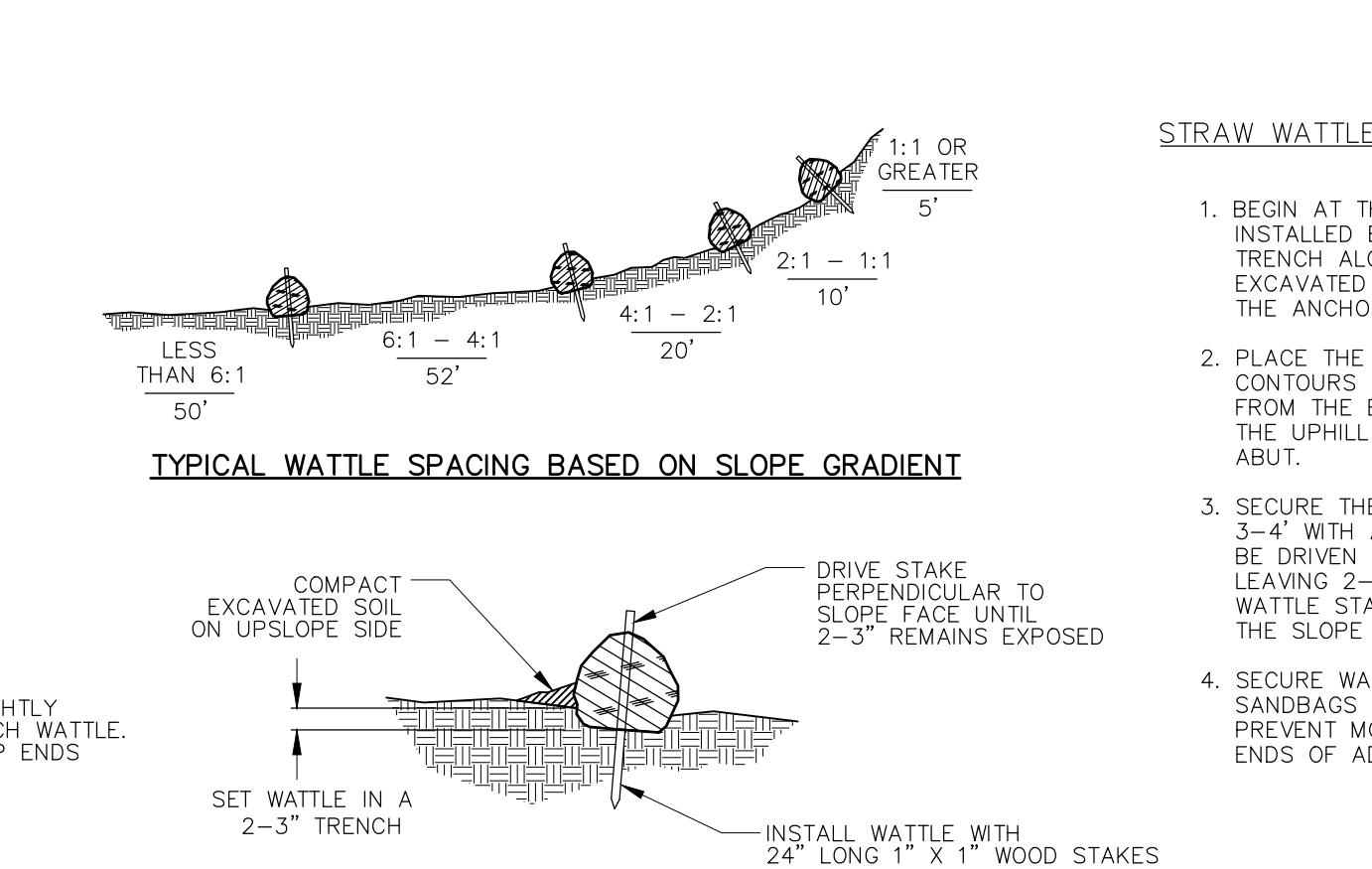
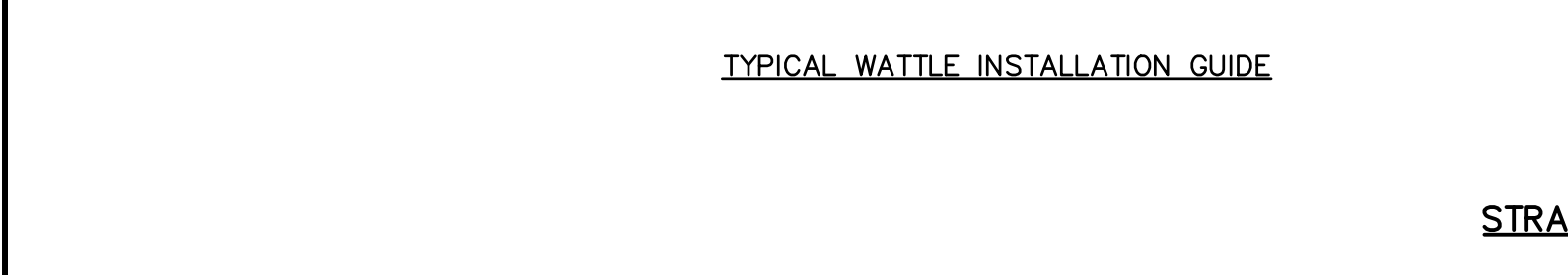
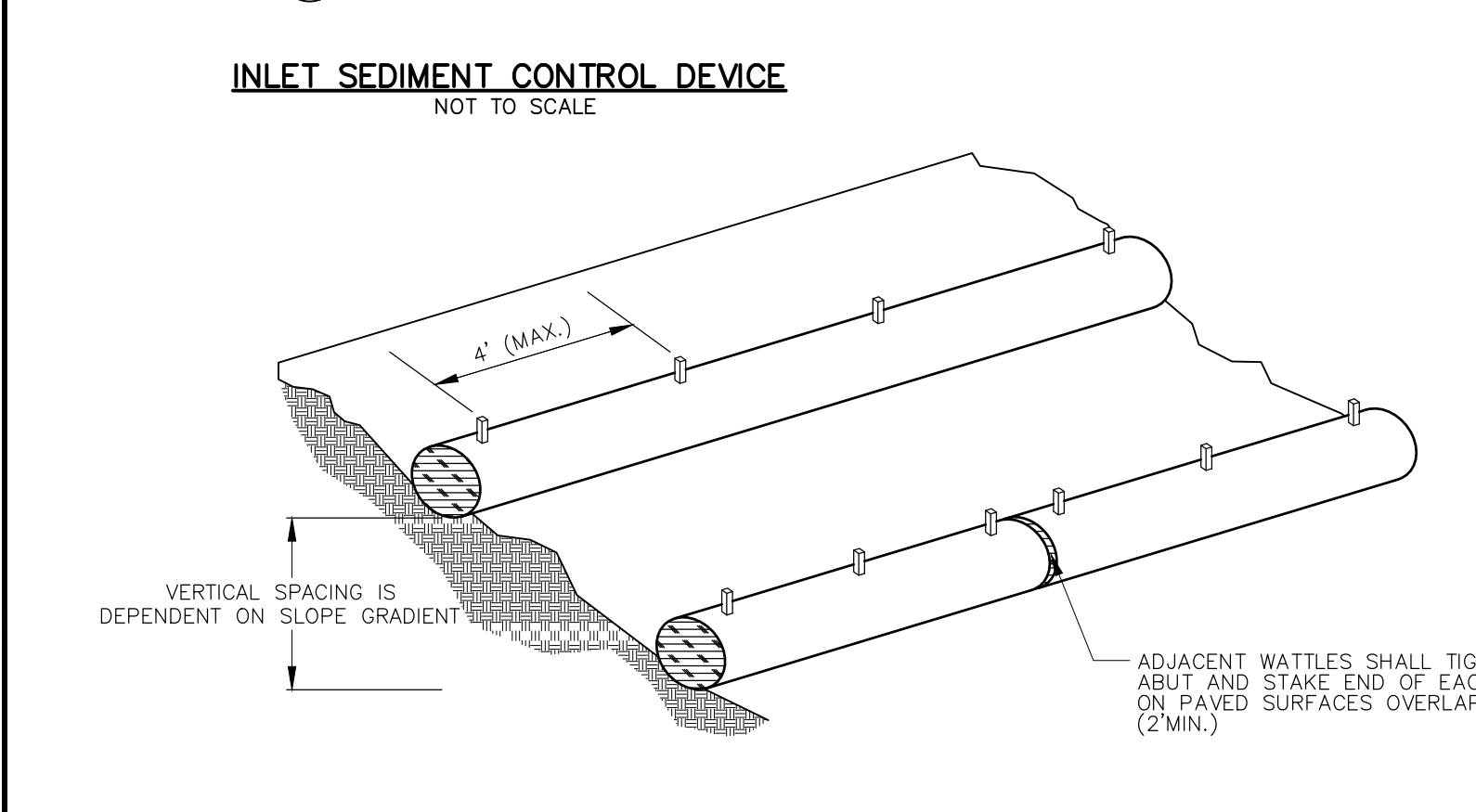
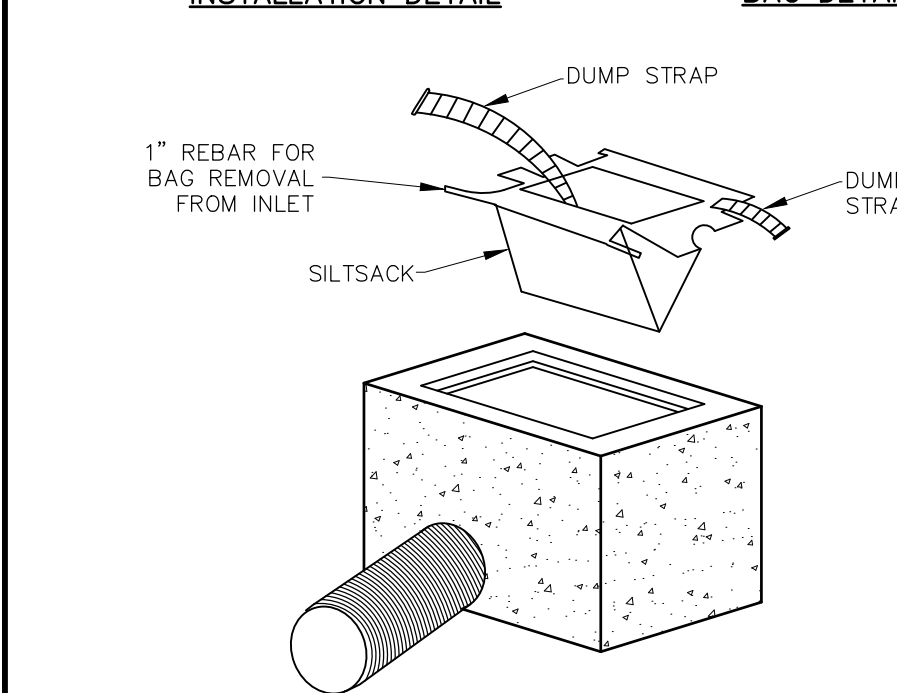
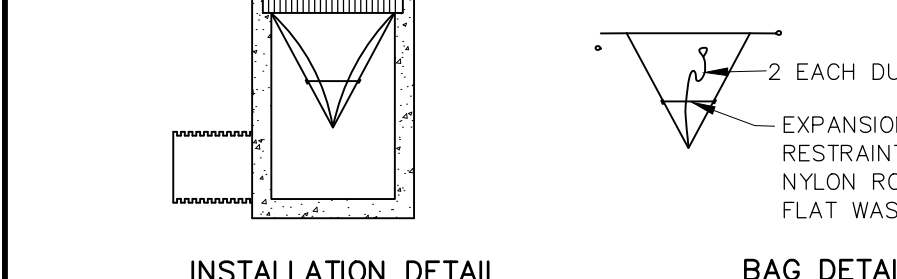
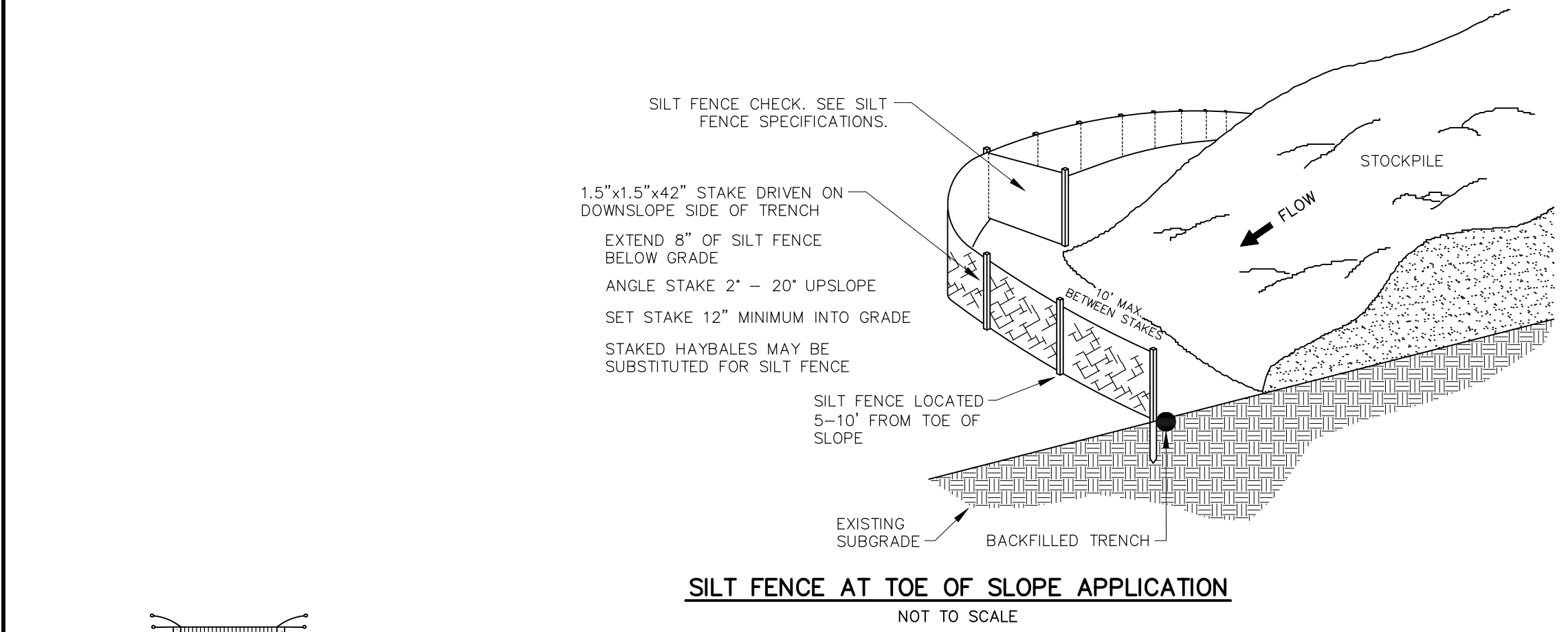
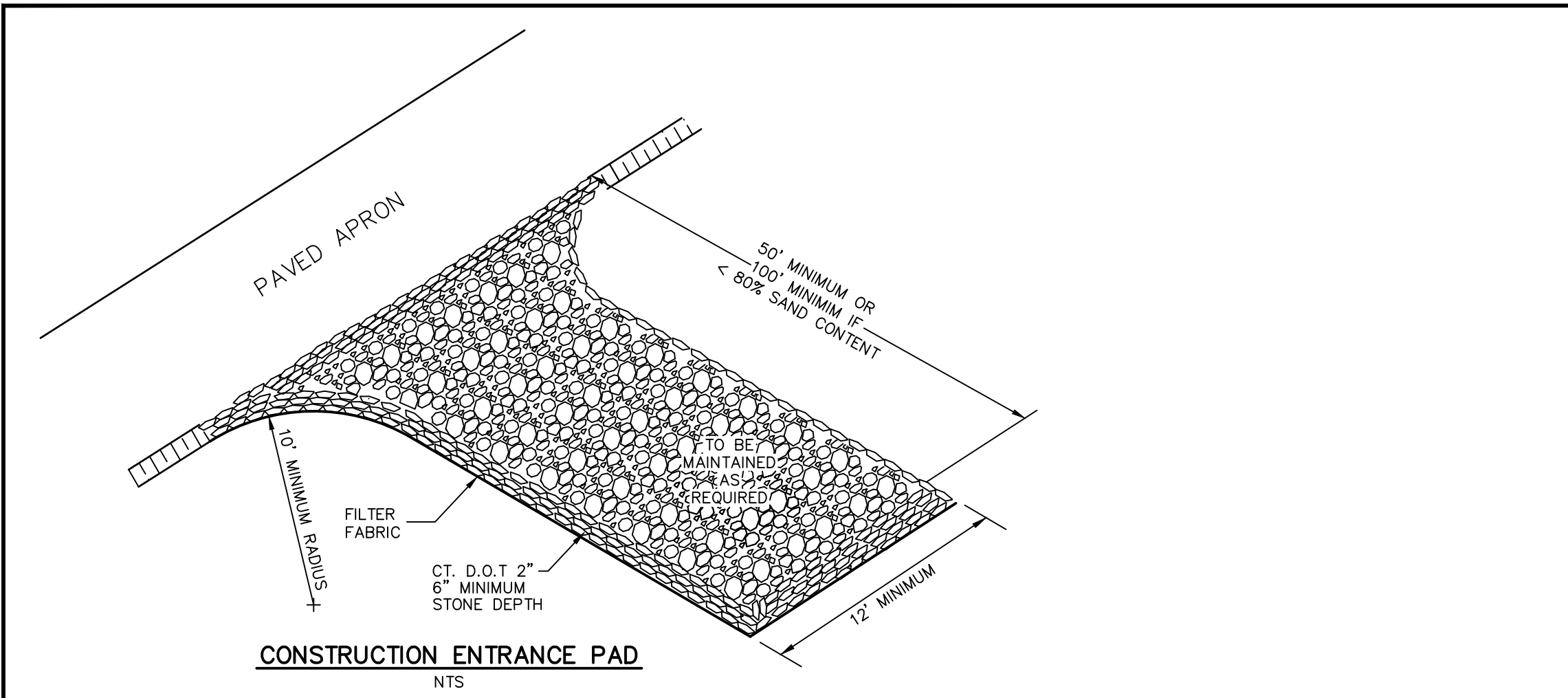
NOTES:

1. MANHOLE SECTIONS TO BE MANUFACTURED TO ASTM C-478 SPECIFICATIONS.
2. REINFORCING SHOWN FOR SCHEMATIC ONLY. STRUCTURE MUST BE DESIGNED TO MEET H-20 LOADING REQUIREMENTS.
3. CONTRACTOR TO SEAL BETWEEN PRECAST WALL & BASE W/BUTYL ROPE.



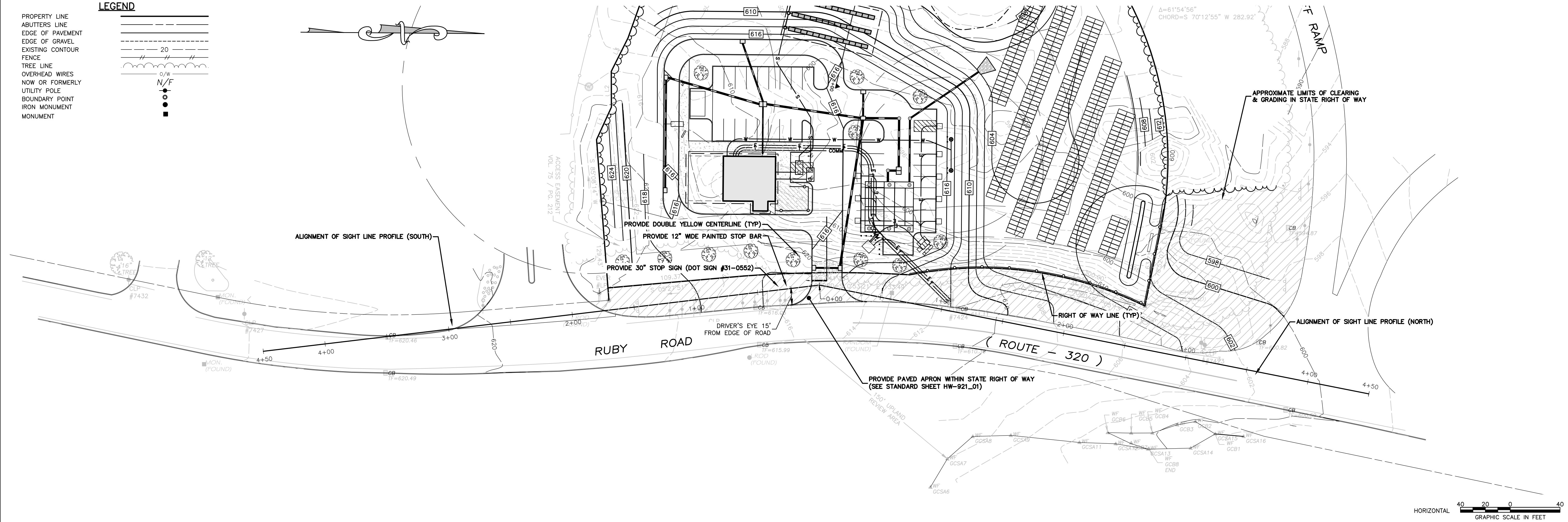
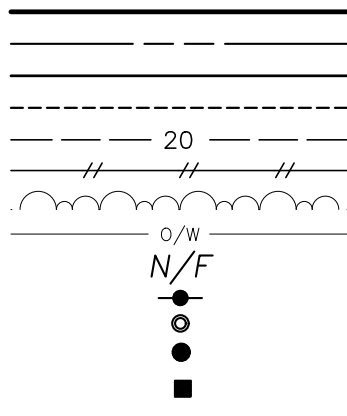
STORMTRAP - INFILTRATION

NOT TO SCALE

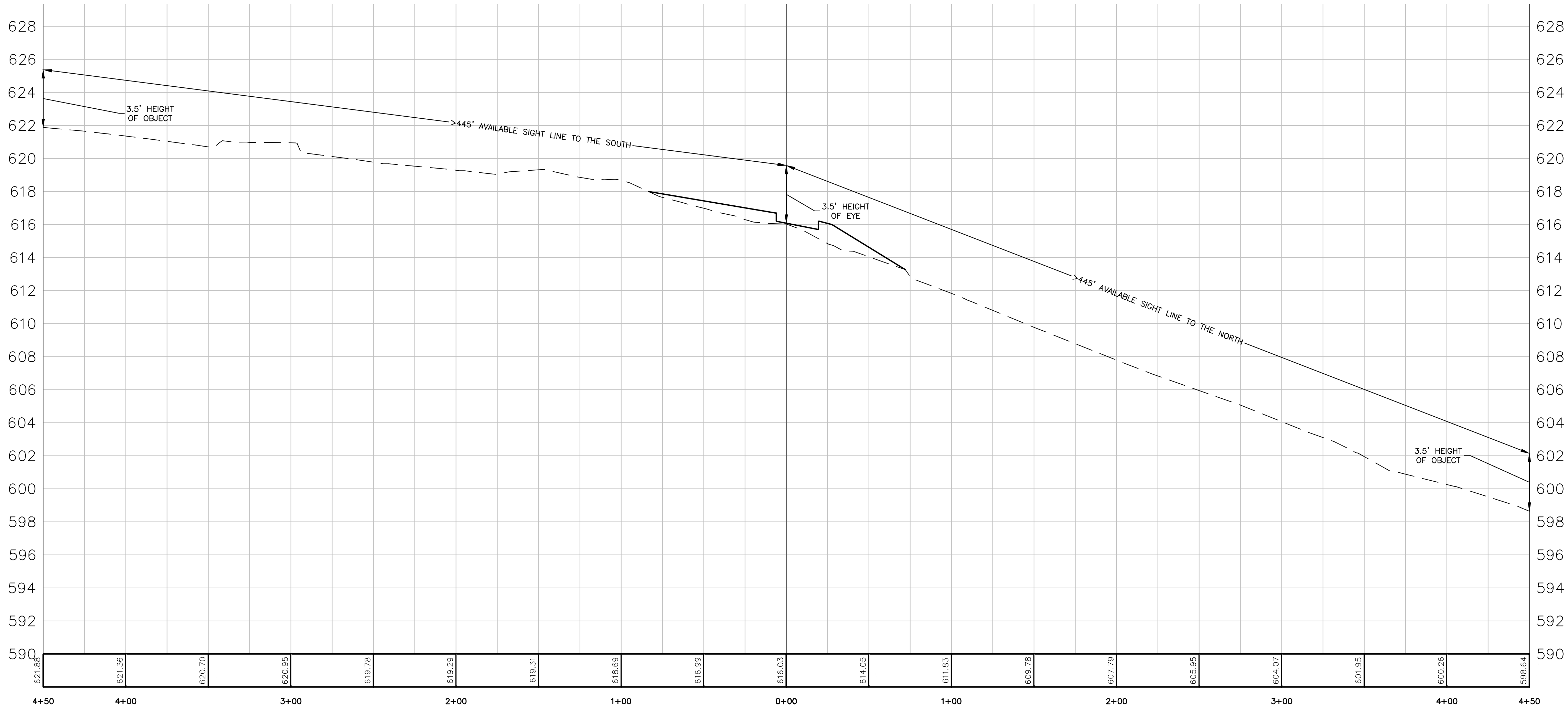


- PROPERTY LINE
ABUTTERS LINE
EDGE OF PAVEMENT
EXISTING CONTOUR
FENCE
TREE LINE
OVERHEAD WIRES
NOW OR FORMERLY
UTILITY POLE
BOUNDARY POINT
IRON MONUMENT
MONUMENT

LEGEND



HORIZONTAL
40 20 0 40
GRAPHIC SCALE IN FEET



PROPOSED COMMERCIAL PARKING
WITH NEW DRIVEWAY
POSTED SPEED LIMIT = 25 MPH
REQUIRED ISD = 280'
AVAILABLE ISD TO NORTH = >445'
AVAILABLE ISD TO SOUTH = >445'

VERTICAL
4 2 0 4
GRAPHIC SCALE IN FEET

SITE DEVELOPMENT PLAN
PREPARED FOR:
DOWN EAST GREEN
RUBY ROAD (RT 320),
WILLINGTON, CONNECTICUT

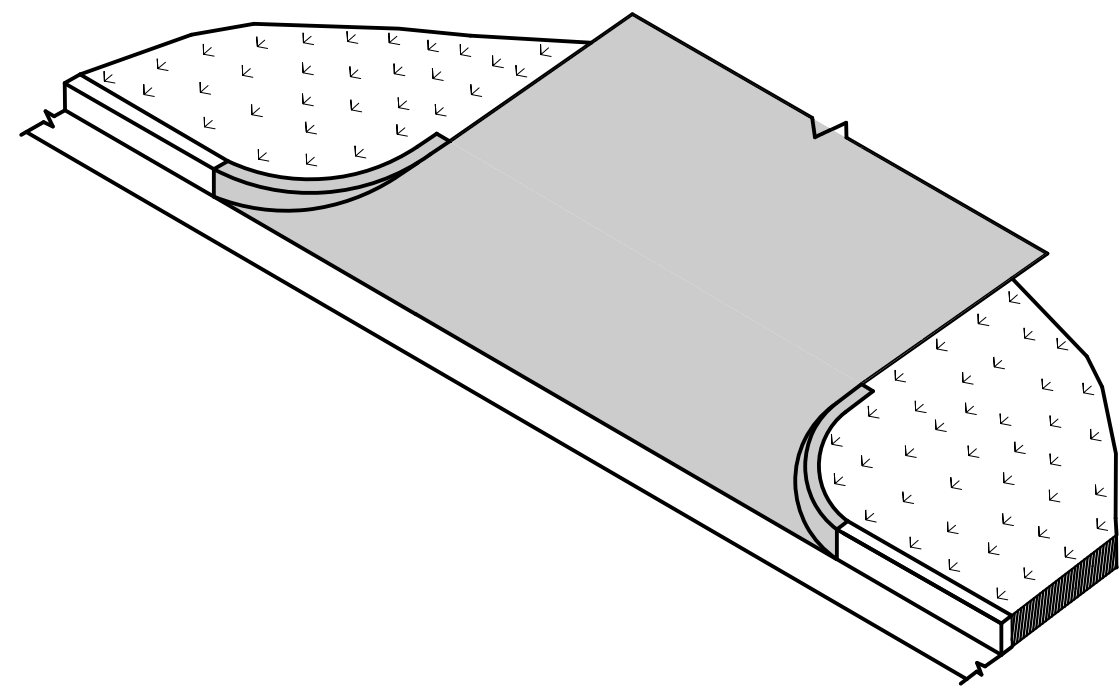
IT IS A VIOLATION OF LAW FOR ANY PERSON, UNLESS THEY ARE
ACTING UNDER THE DIRECTION OF A LICENSED PROFESSIONAL
ENGINEER, ARCHITECT, LANDSCAPE ARCHITECT OR LAND
SURVEYOR TO ALTER AN ITEM IN ANY WAY. IF AN ITEM BEARING THE
STAMP OF A LICENSED PROFESSIONAL IS ALTERED, THE ALTERING
ENGINEER, ARCHITECT, LANDSCAPE ARCHITECT OR LAND
SURVEYOR SHALL STAMP THE DOCUMENT AND INCLUDE THE
NOTATION "ALTERED BY" FOLLOWED BY THEIR SIGNATURE, THE
DATE OF SUCH ALTERATION, AND A SPECIFIC DESCRIPTION
OF THE ALTERATION.

No.	Submittal / Revision	App'd.	By	Date
1	CT DOT COMMENTS	PMP		11/30/2022
2	CT DOT COMMENTS	PMP		01/31/2023
3	DRIVE-THRU	PMP		11/29/2023

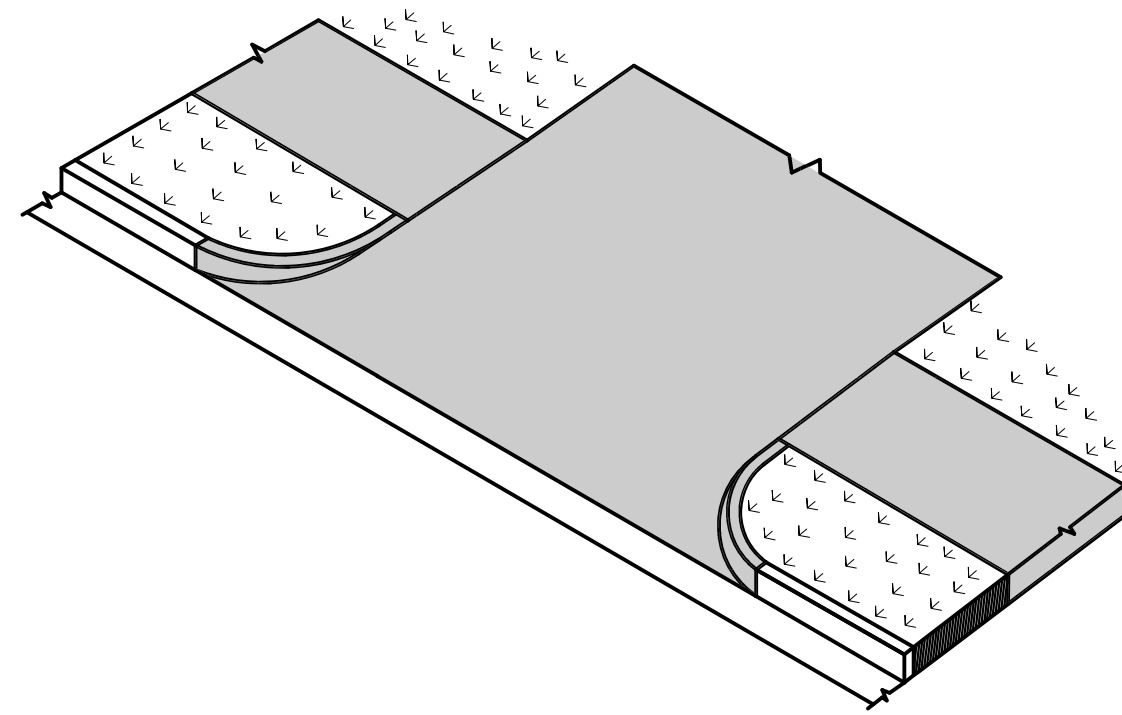
SIGHT LINE
DEMONSTRATION

Designed By: PMP	Drawn By: PMP	Checked By: PMP
Issue Date: 08/31/2022	Project No.: 074742	Scale: 1" = 40'

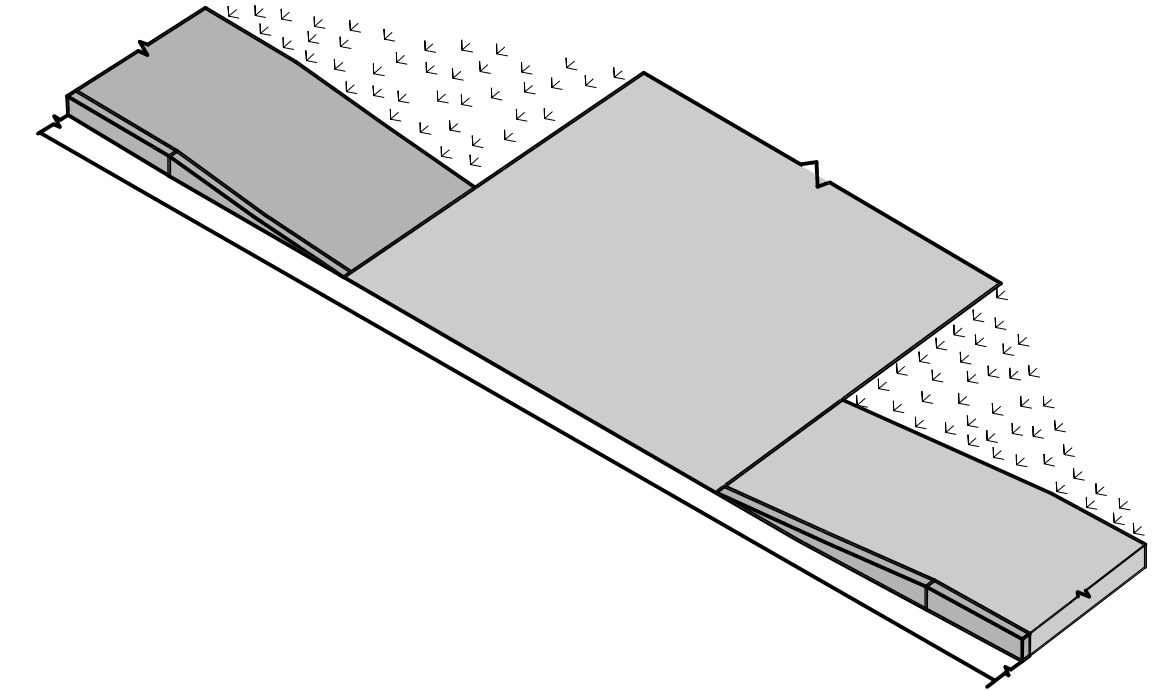
Drawing No.:
SHEET 7



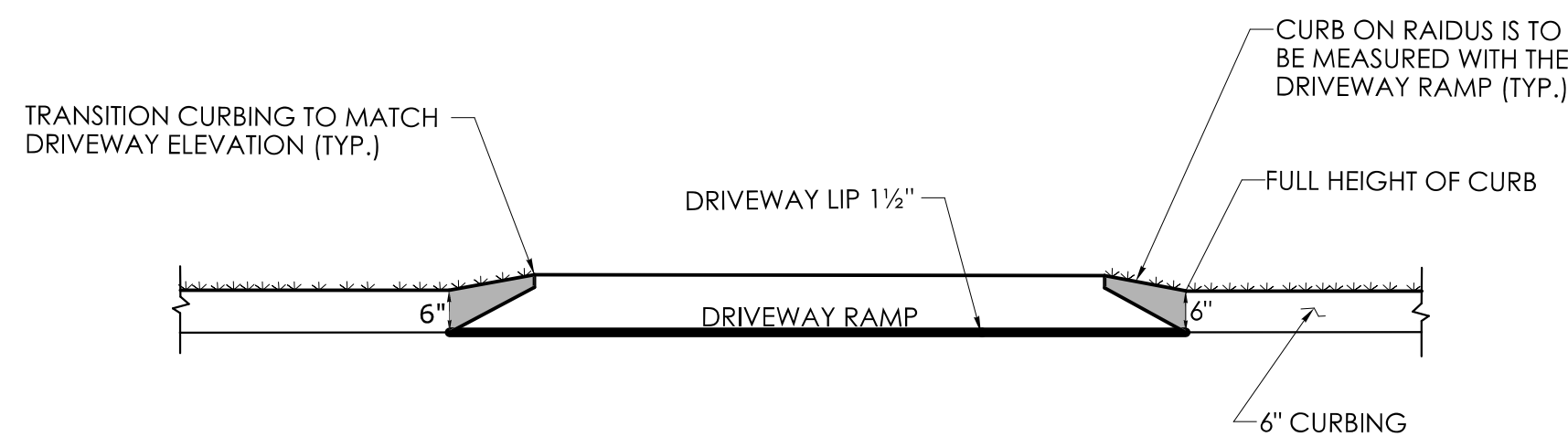
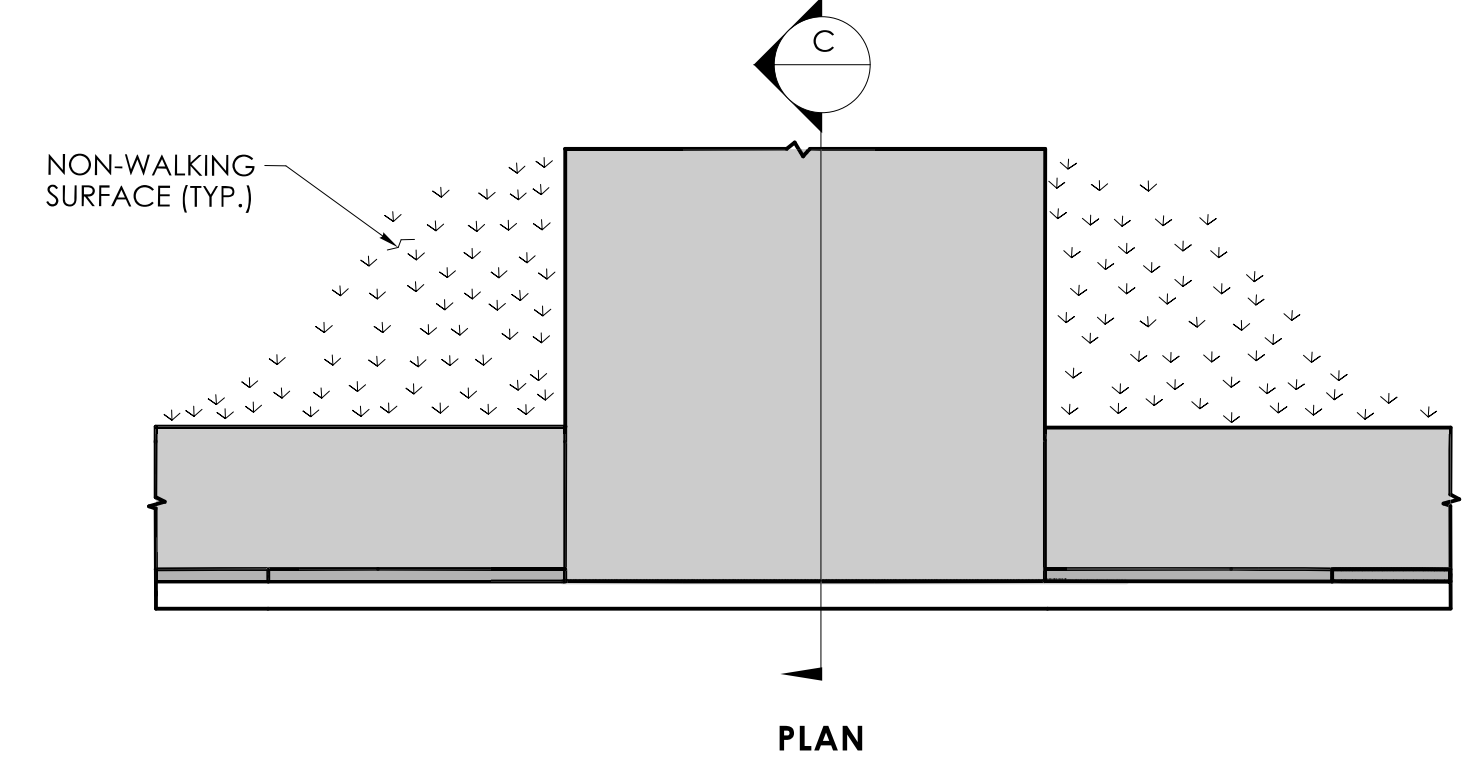
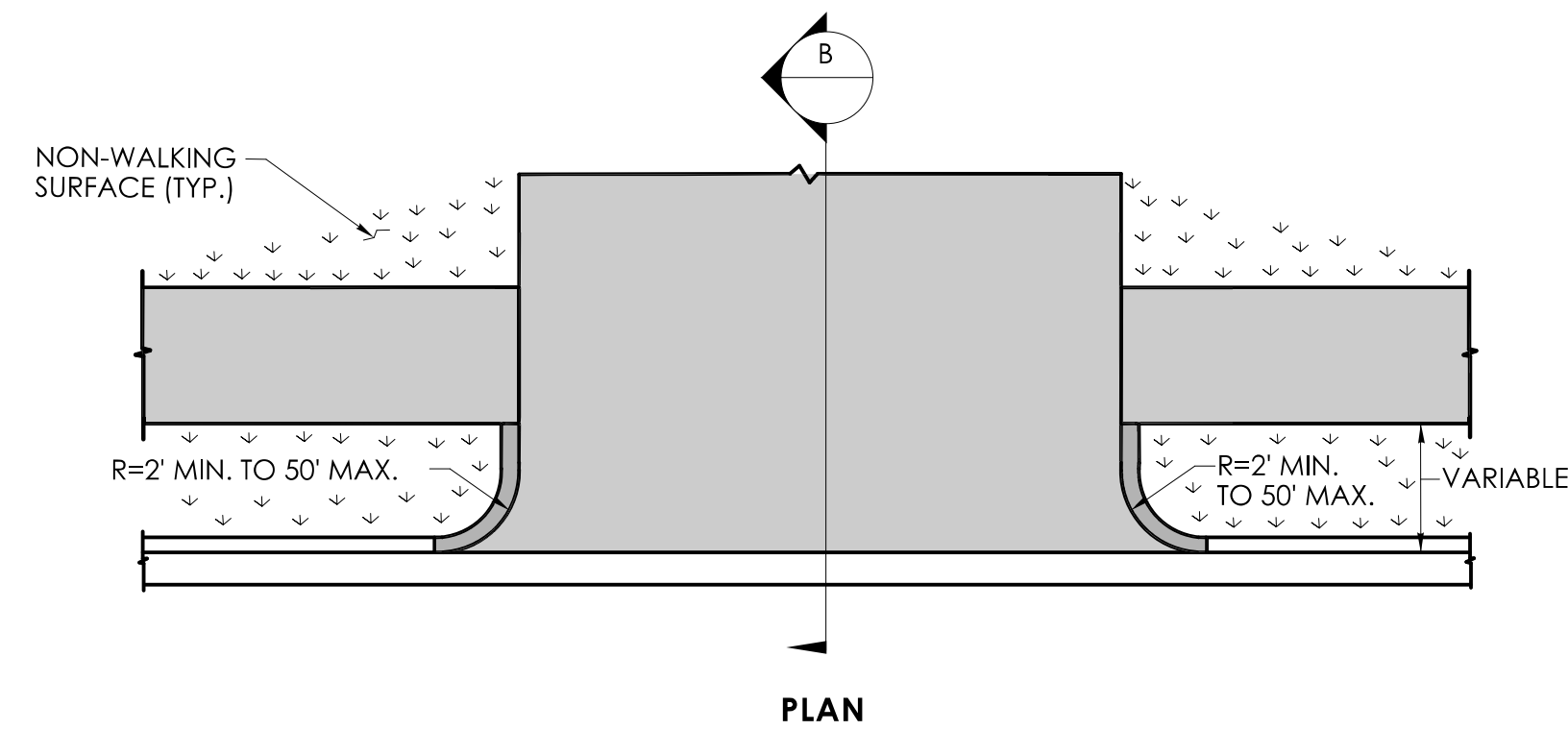
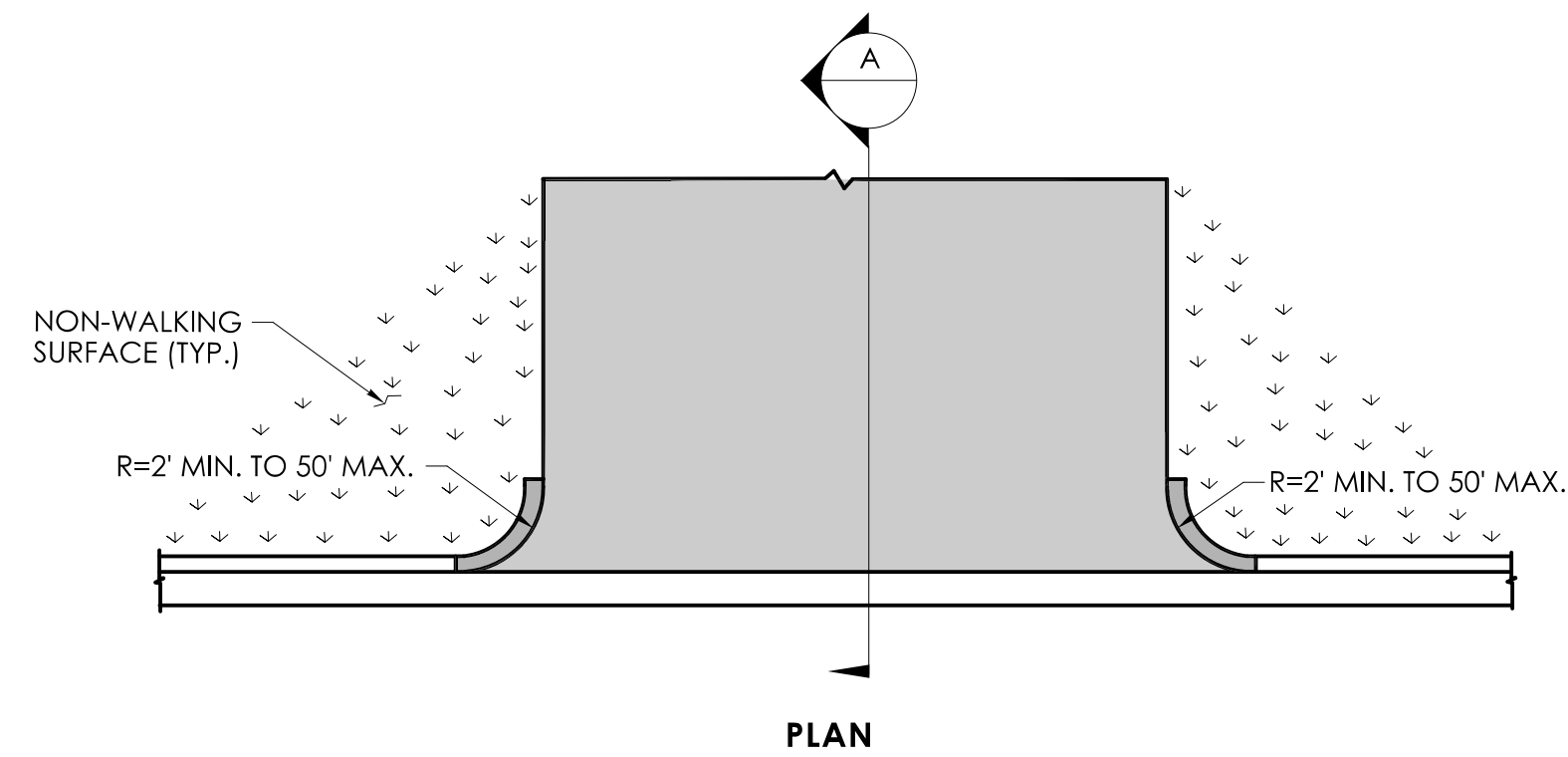
BITUMINOUS CONCRETE DRIVEWAY



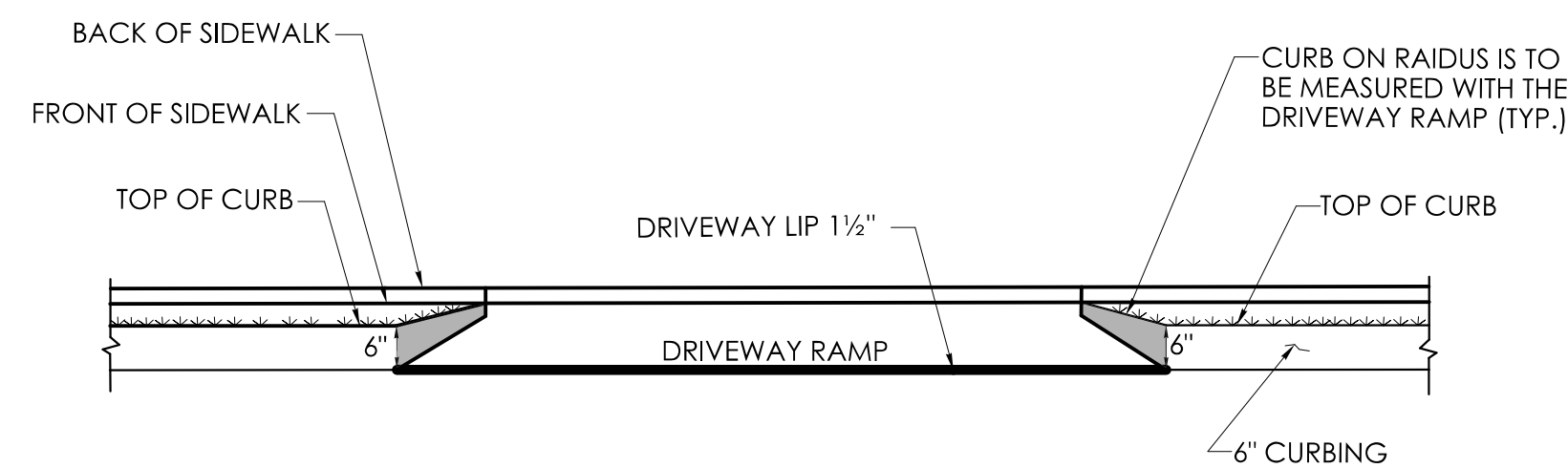
BITUMINOUS CONCRETE DRIVEWAY
WITH A PEDESTRIAN SIDEWALK SETBACK



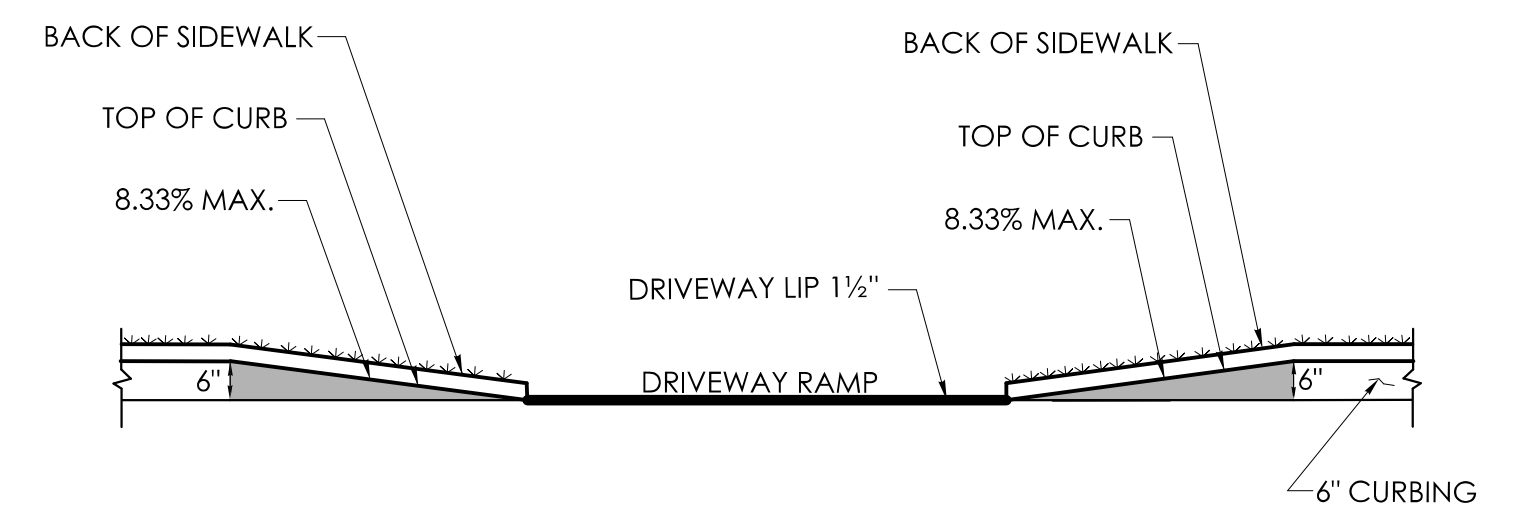
BITUMINOUS CONCRETE DRIVEWAY
WITH PEDESTRIAN SIDEWALK AT THE CURB



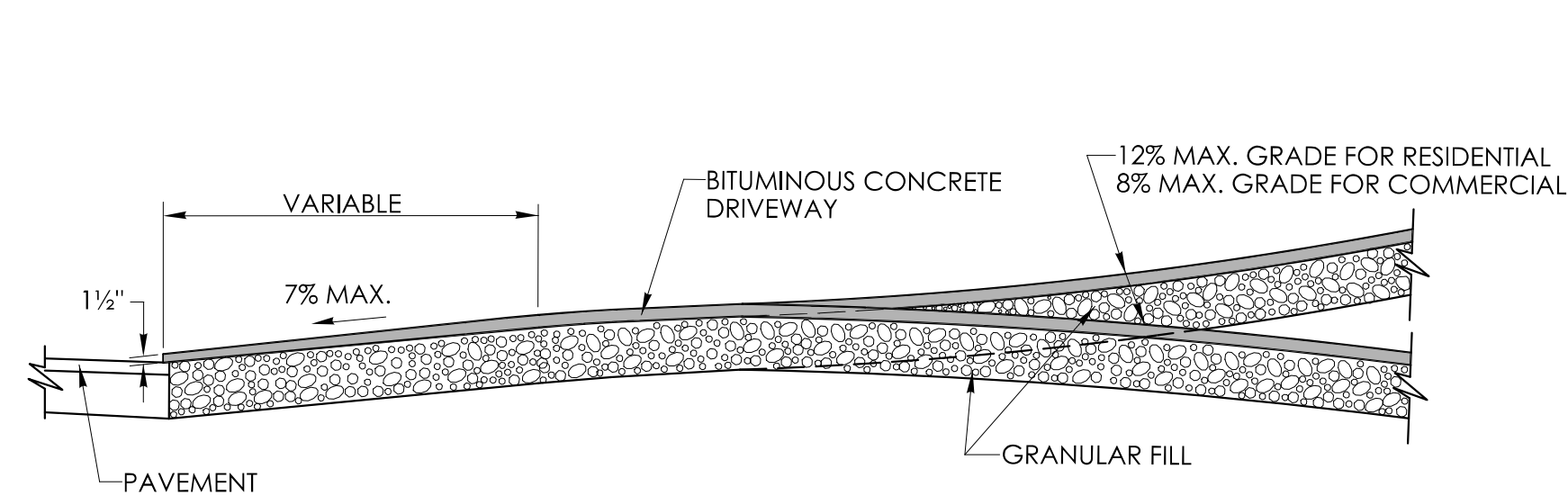
ELEVATION



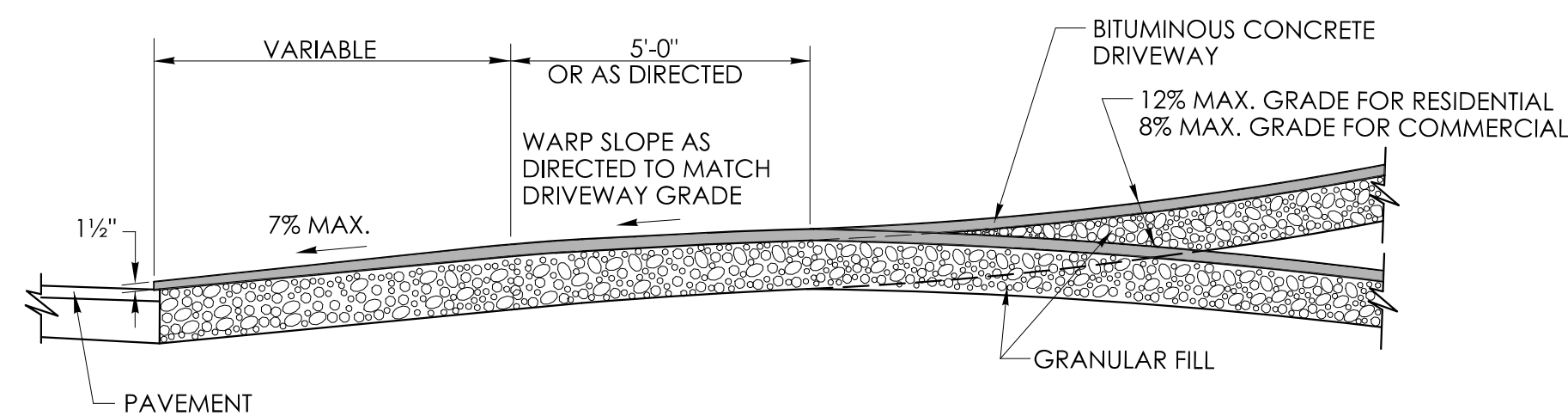
ELEVATION



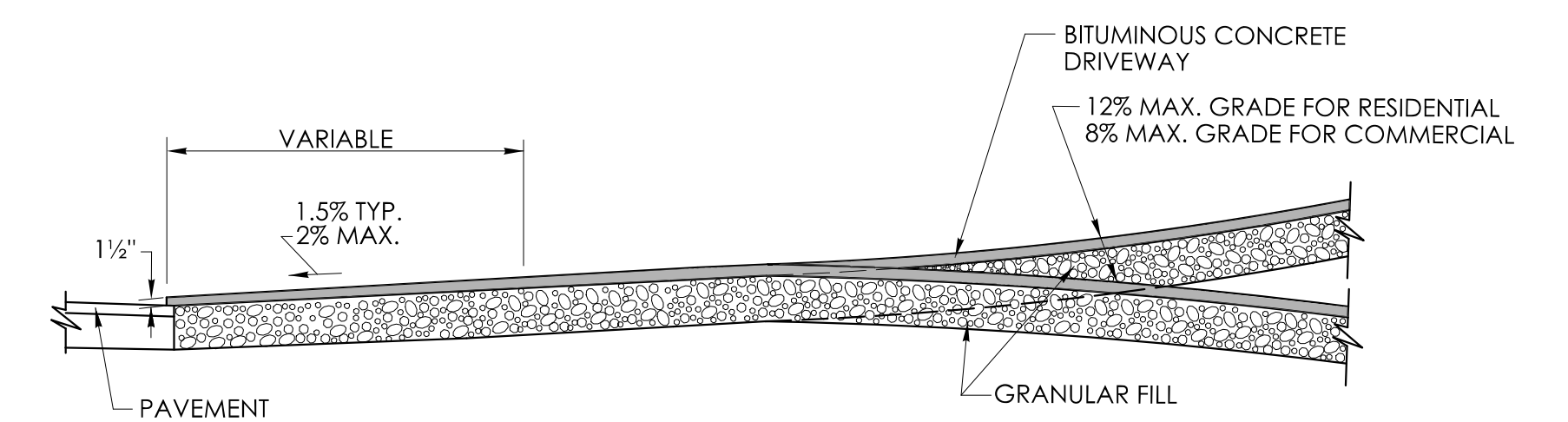
ELEVATION



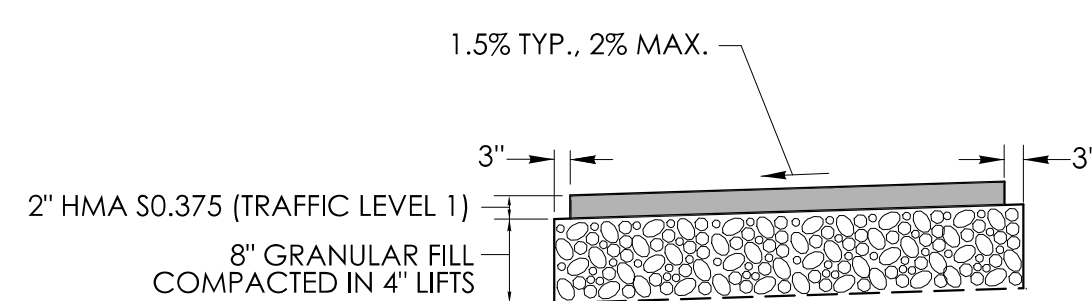
SECTION A



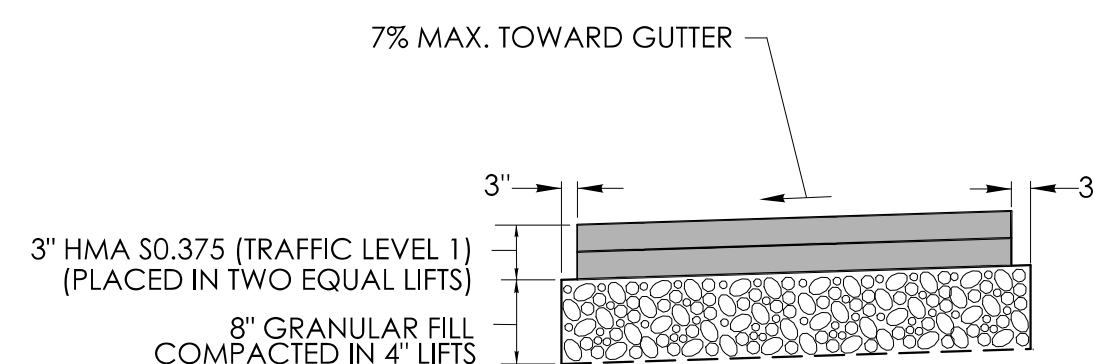
SECTION B



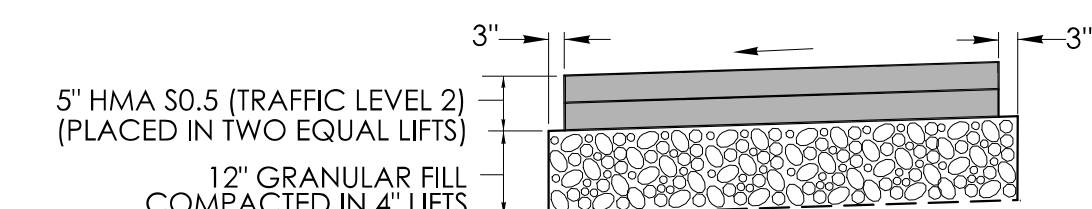
SECTION C



BITUMINOUS CONCRETE SIDEWALK

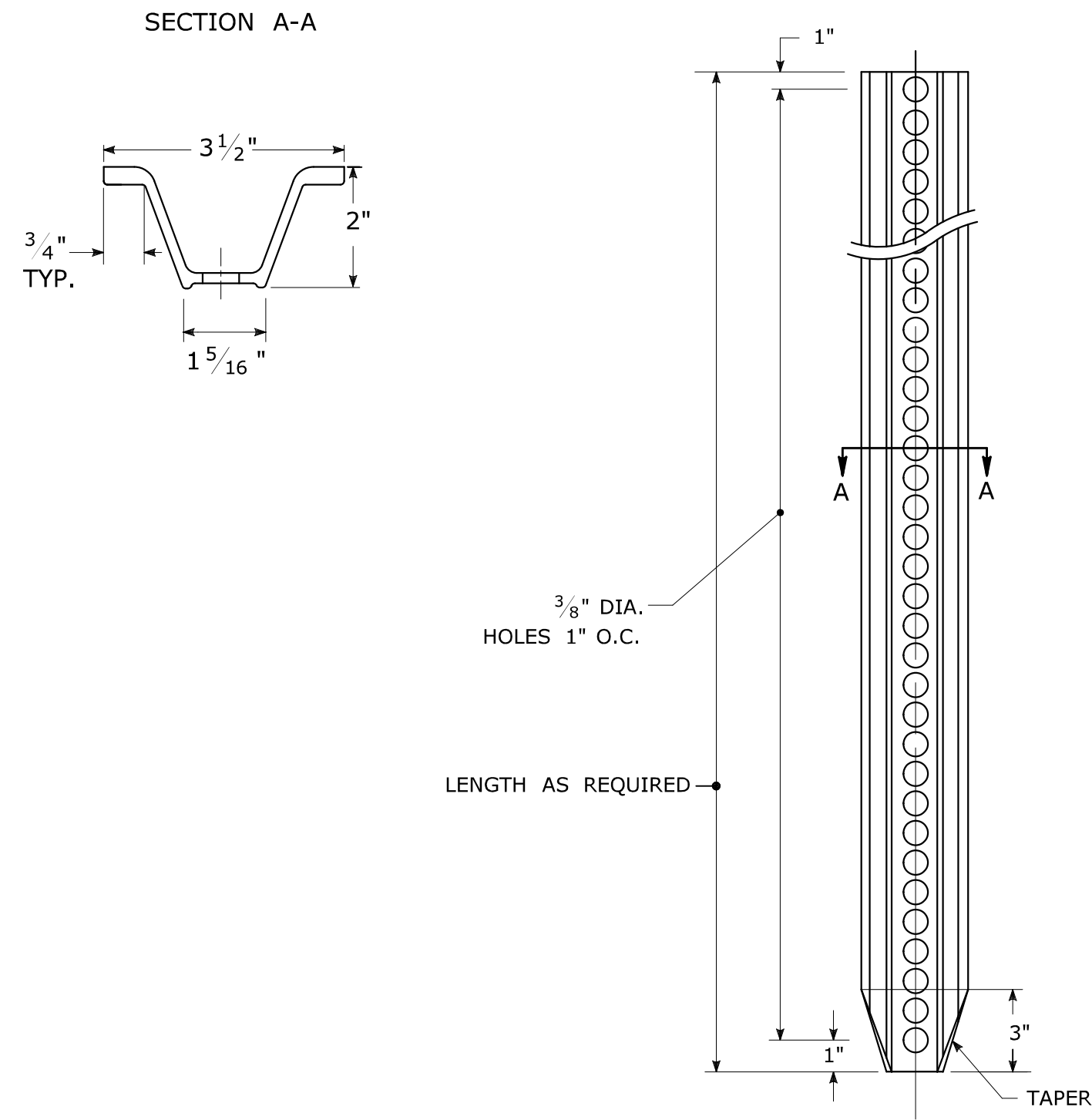


BITUMINOUS CONCRETE DRIVEWAY

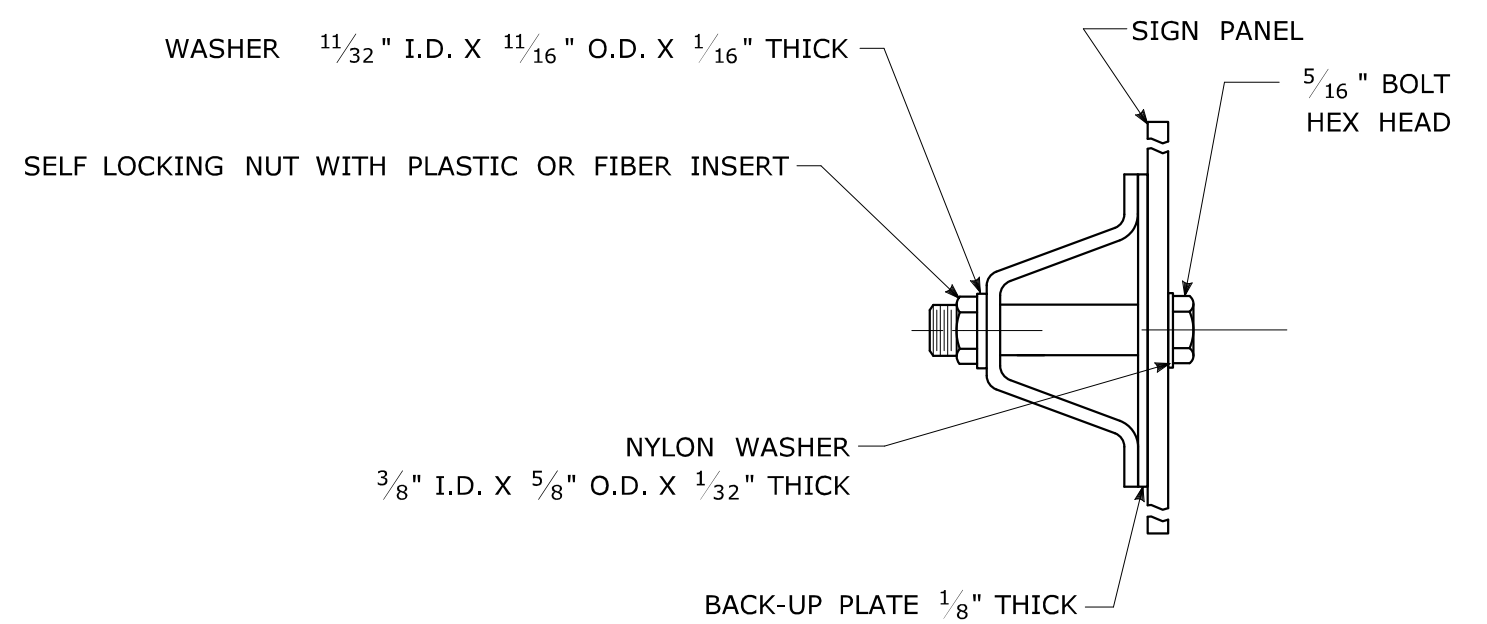


COMMERCIAL
BITUMINOUS CONCRETE DRIVEWAY

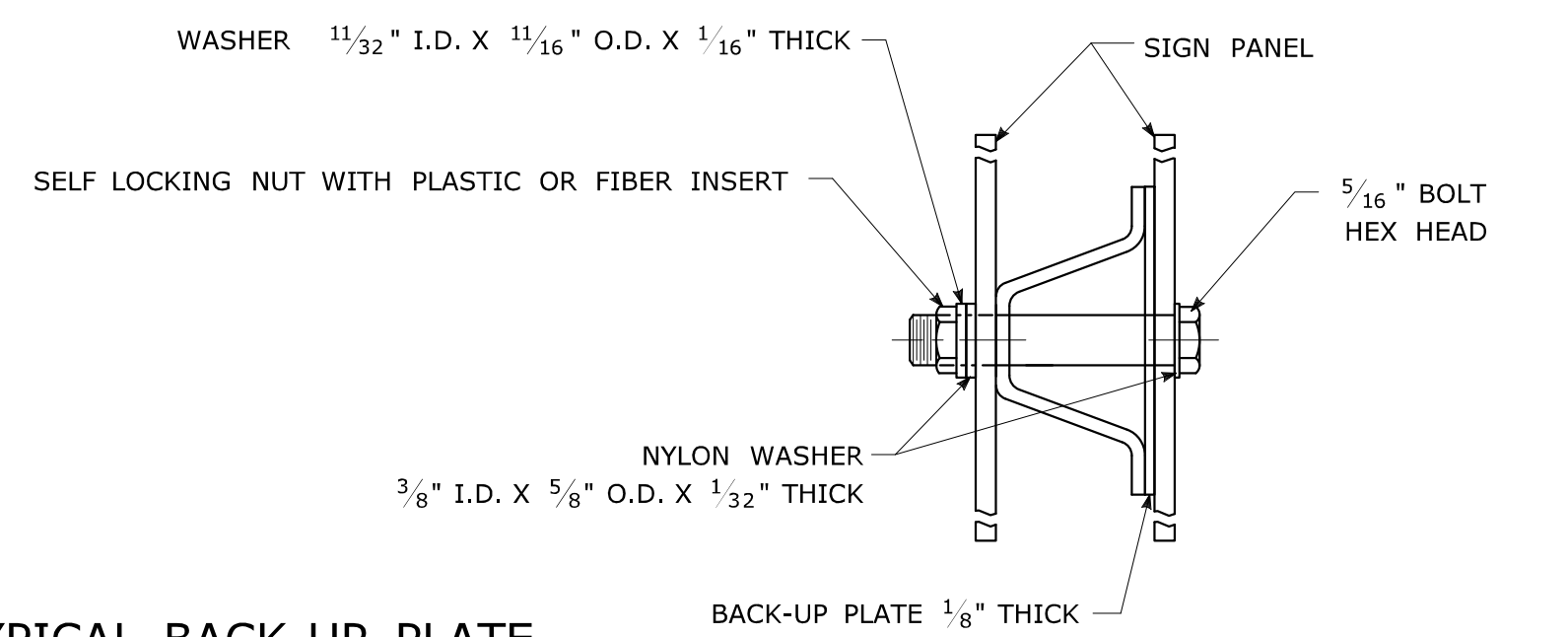
TYPICAL METAL SIGN POSTS



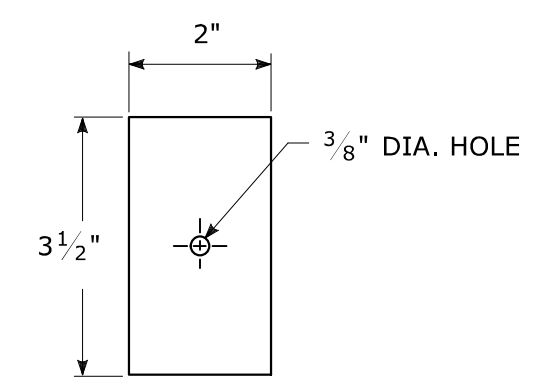
TYPICAL SIGN PANEL ATTACHMENT



TYPICAL BACK TO BACK SIGN PANEL ATTACHMENT



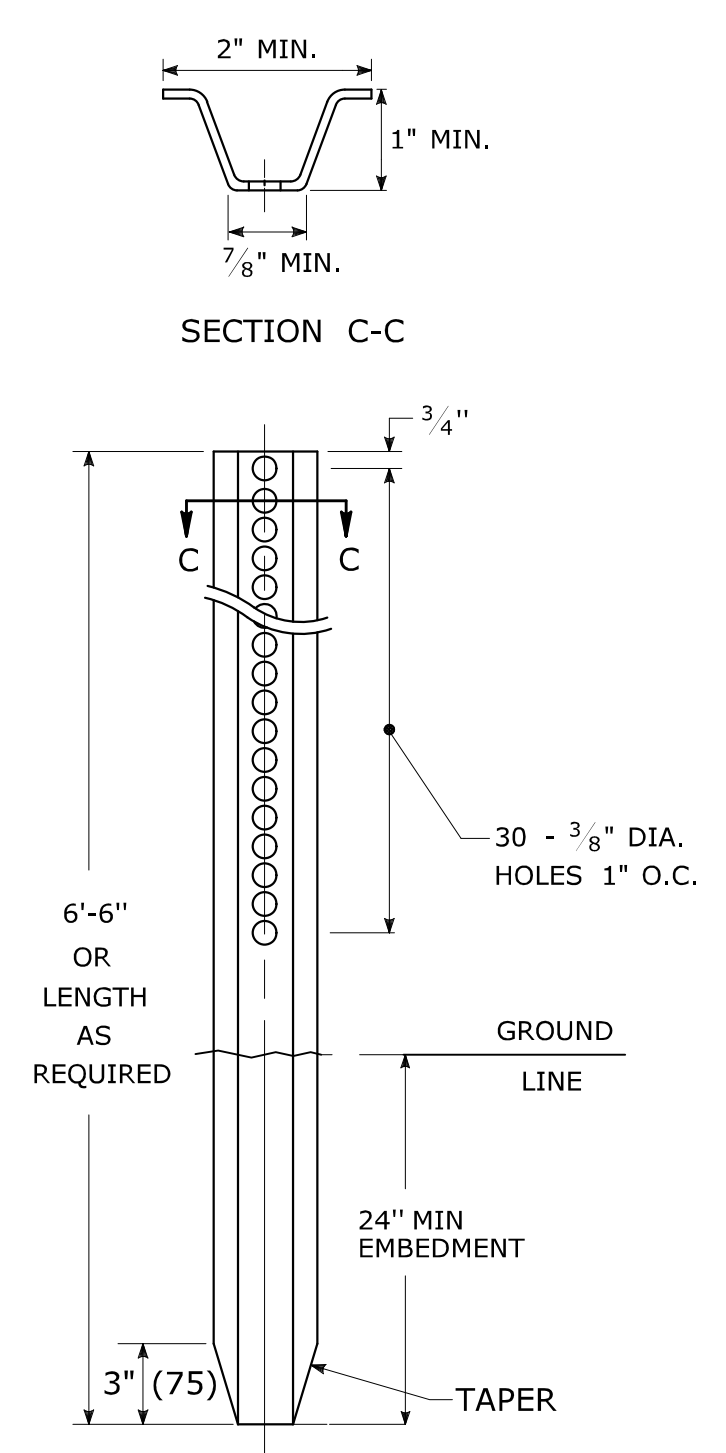
TYPICAL BACK-UP PLATE



BOLTS - STAINLESS STEEL CONFORMING TO ASTM F593, ALLOY GROUP 1 OR 2 (ALLOY TYPES 304 OR 316).
SELF LOCKING NUTS - STAINLESS STEEL CONFORMING TO ASTM F594, ALLOY GROUP 1 OR 2 (ALLOY TYPES 304 OR 316).
WASHERS - STAINLESS STEEL CONFORMING TO ASTM A240, (ALLOY TYPES 304 OR 316).

METAL DELINEATOR POST

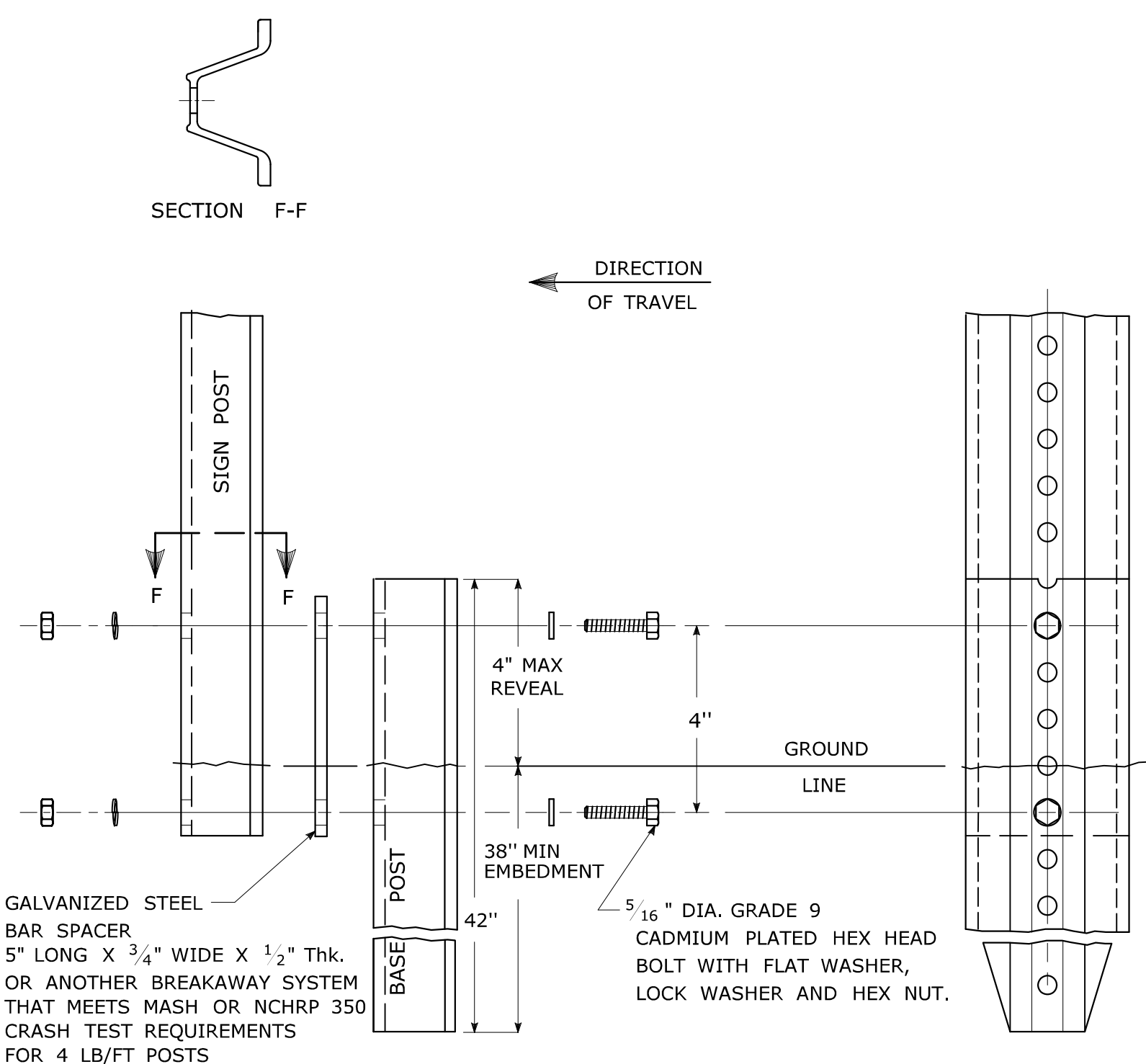
WT./FT. = 1.12 LBS./FT. MIN.



GENERAL NOTES:

1. STEEL FOR DELINEATOR POSTS SHALL BE ASTM A36 STEEL.
STEEL FOR ALL OTHER POSTS SHALL CONFORM TO THE MECHANICAL REQUIREMENTS OF ASTM A 499 GRADE 80 AND TO THE CHEMICAL REQUIREMENTS OF ASTM A1 CARBON STEEL TEE RAIL HAVING NOMINAL WEIGHT (MASS) OF 91 LBS. OR GREATER PER LINEAR YARD.
2. AFTER FABRICATION, ALL STEEL POSTS, STRAPS AND PLATES SHALL BE GALVANIZED TO MEET THE REQUIREMENTS OF ASTM A123.
3. WASHERS FOR BREAKAWAY INSTALLATIONS SHALL MEET ASTM F436, TYPE 1.
4. SPACER BAR FOR BREAKAWAY INSTALLATION SHALL CONFORM TO THE MECHANICAL REQUIREMENTS OF ASTM A36.
5. ALL BOLTS, NUTS, AND WASHERS FOR BREAKAWAY INSTALLATIONS SHALL BE GALVANIZED TO MEET THE REQUIREMENTS OF ASTM A153.
6. ALL SIGN POSTS SHALL HAVE BREAKAWAY FEATURES THAT MEET AASHTO REQUIREMENTS CONTAINED IN THE CURRENT "STANDARD SPECIFICATIONS FOR STRUCTURAL SUPPORTS FOR HIGHWAY SIGNS, LUMINAIRES AND TRAFFIC SIGNALS." THE BREAKAWAY FEATURES SHALL BE STRUCTURALLY ADEQUATE TO CARRY THE SIGNS SHOWN IN THE PLANS AT 60 mph WIND LOADINGS. INSTALLATIONS SHALL BE IN ACCORDANCE WITH MANUFACTURERS RECOMMENDATIONS.
7. SIGN POSTS SHALL BE 4 LBS./FT.

BREAKAWAY INSTALLATION
FOR 4 LBS./FT. POSTS

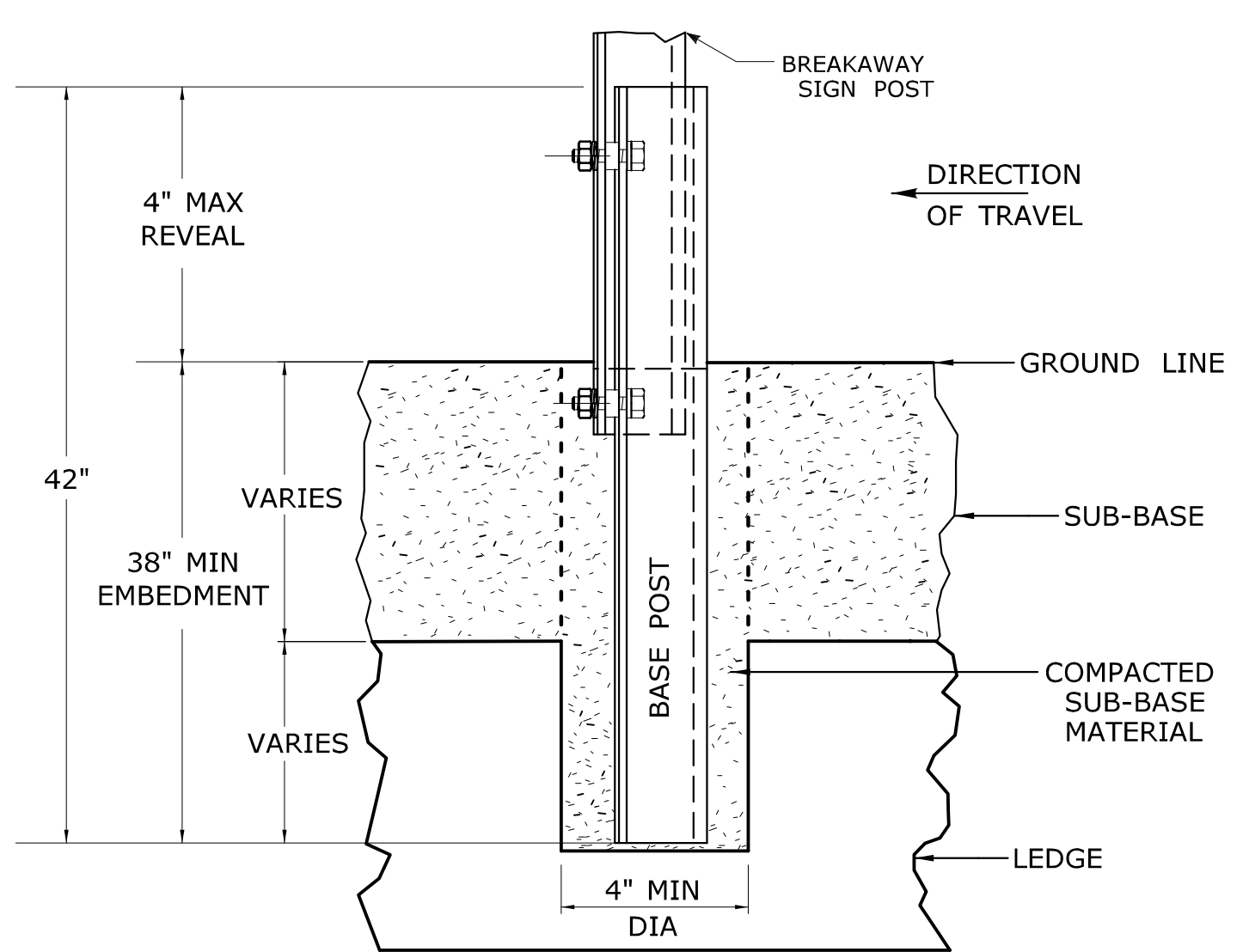


GALVANIZED STEEL
BAR SPACER
5" LONG X 3/4" WIDE X 1/2" THK.
OR ANOTHER BREAKAWAY SYSTEM
THAT MEETS MASH OR NCHRP 350
CRASH TEST REQUIREMENTS
FOR 4 LB/FT POSTS

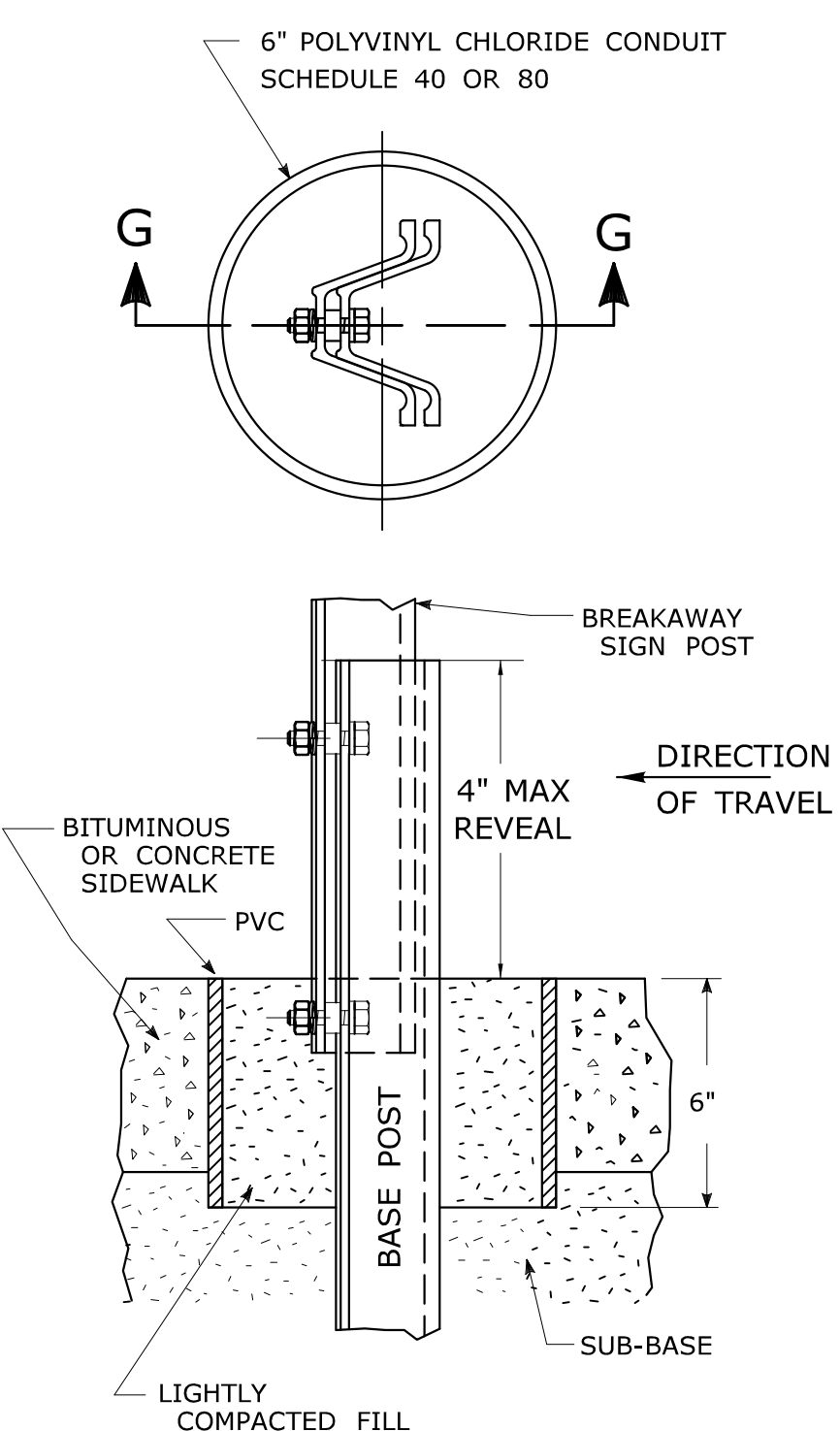
5/16" DIA. GRADE 9
CADMIUM PLATED HEX HEAD
BOLT WITH FLAT WASHER,
LOCK WASHER AND HEX NUT.

TYPICAL SIGN POST INSTALLATION IN LEDGE

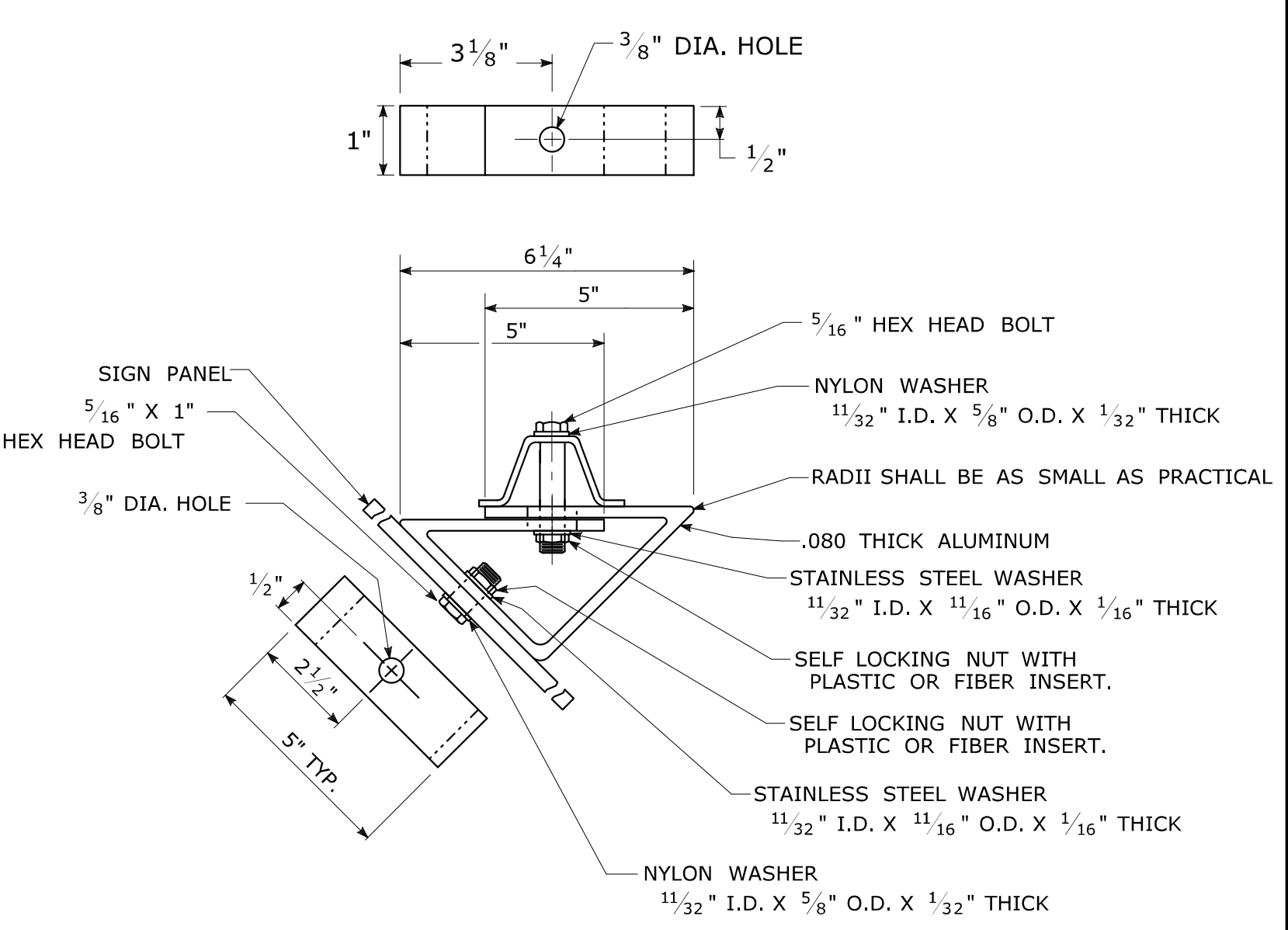
LEDGE SHALL BE REMOVED TO DRIVE THE BASE POST TO A DEPTH OF 38".
HOLE SHALL BE FILLED WITH SUB-BASE MATERIAL AND COMPACTED WITH A TAMPING BAR, OR TECHNIQUE APPROVED BY THE ENGINEER, PRIOR TO BASE POST INSTALLATION.



TYPICAL SLEEVE
FOR PAVED AREAS



45° MOUNTING BRACKET
FOR INSTALLATION OF PARKING SIGNS



REV.	DATE	REVISION DESCRIPTION
2	6-2017	SIGN POST REVISIONS.
1	2-2011	MINOR REVISIONS.

THE INFORMATION, INCLUDING ESTIMATED QUANTITIES OF WORK, SHOWN ON THESE SHEETS IS BASED ON LIMITED INVESTIGATIONS BY THE STATE AND IS IN NO WAY WARRANTED TO INDICATE THE CONDITIONS OF ACTUAL QUANTITIES OF WORK WHICH WILL BE REQUIRED.

Plotted Date: 6/6/2017

NOT TO SCALE



Filename: TR-1208_02_May_2017_Revision.dgn Model: TR-1208_02

SUBMITTED BY:	NAME/DATE/TIME:
Mark F. Makuch	Mark F. Makuch, P.E. 2017.06.07 07:30:30-04'00'
Mary E. Baker	Mary E. Baker, P.E. 2017.06.13 15:28:14-04'00'
APPROVED BY:	NAME/DATE/TIME:
Gregory M. Dorosh	Gregory M. Dorosh, P.E. 2017.06.15 09:27:29-04'00'

CTDOT
STANDARD SHEET
OFFICE OF ENGINEERING

STANDARD SHEET TITLE:
**METAL SIGN POSTS
AND SIGN MOUNTING DETAILS**

GUIDE SHEET NO.:
TR-1208_02