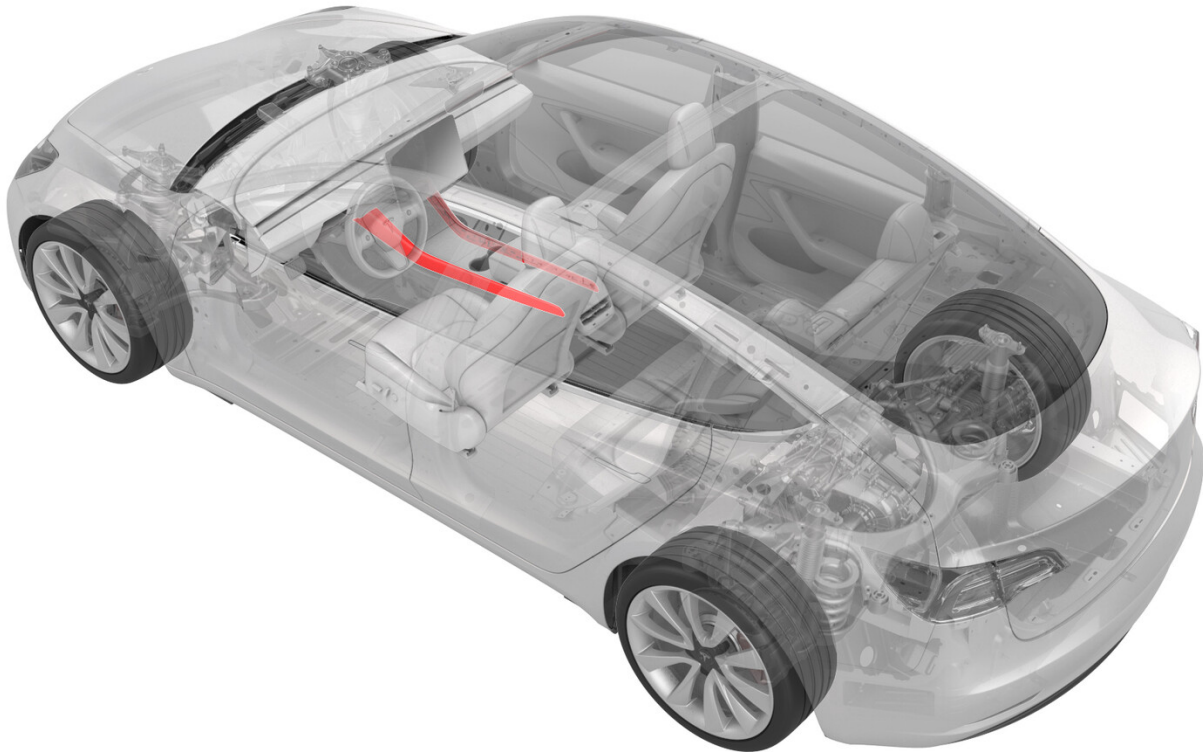


Last modified: 30/04/2020 08:51:55

## Decor Trim - Center Console - LH (Remove and Replace)



Correction code 15193602

FRT 0.05

**NOTE:** Unless otherwise explicitly stated in the procedure, the above correction code and FRT reflect all of the work required to perform this procedure, including the linked procedures. **Do not stack correction codes unless explicitly told to do so.**

**NOTE:** See [Flat Rate Times](#) to learn more about FRTs and how they are created. To provide feedback on FRT values, email [LaborTimeFeedback@tesla.com](mailto:LaborTimeFeedback@tesla.com).

**NOTE:** See [Personal Protection](#) to make sure wearing proper PPE when performing the below procedure.

### Remove

1. Open the LH front door.
2. Move the LH front seat to the lowest and most rearward position.
3. Release the clips (x9) that attach the LH center console decor trim to the center console, and then remove the decor trim.

Figure 1. Clip Locations on Center Console

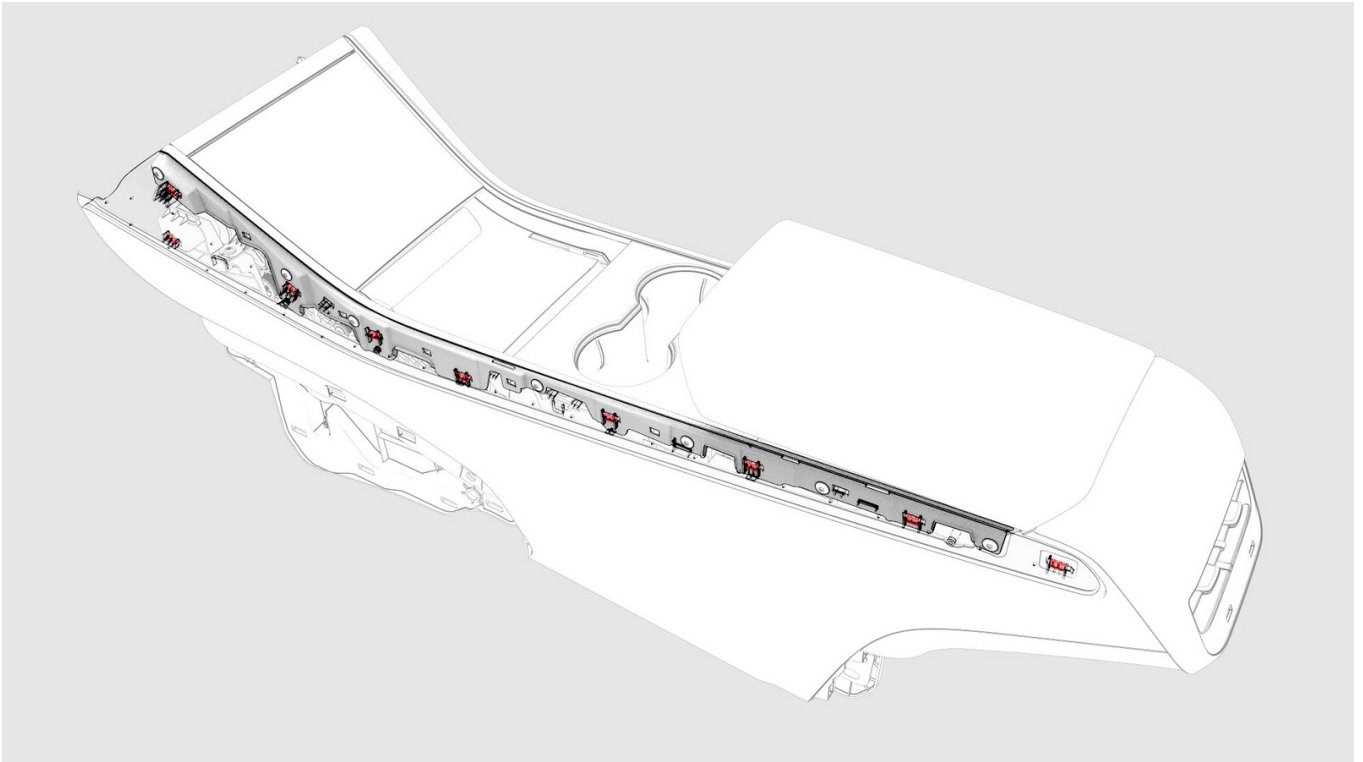
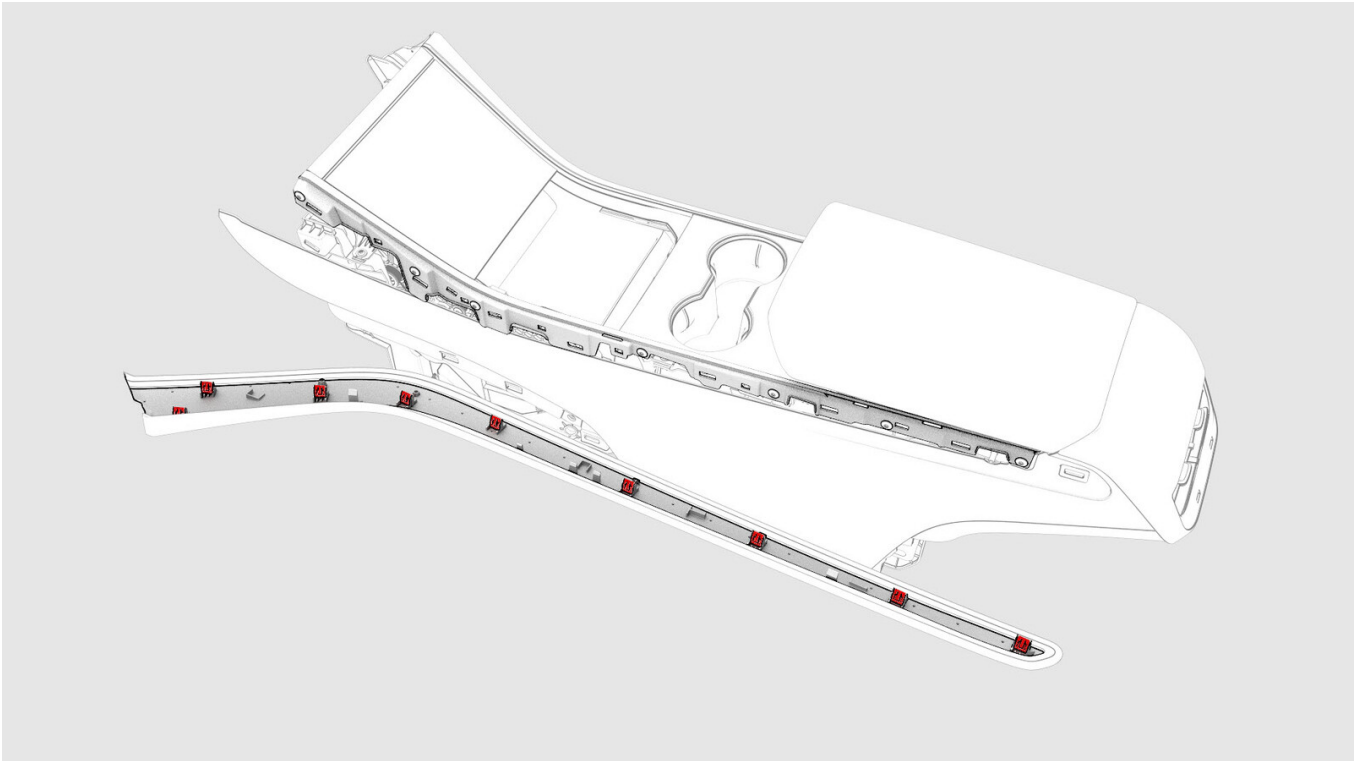
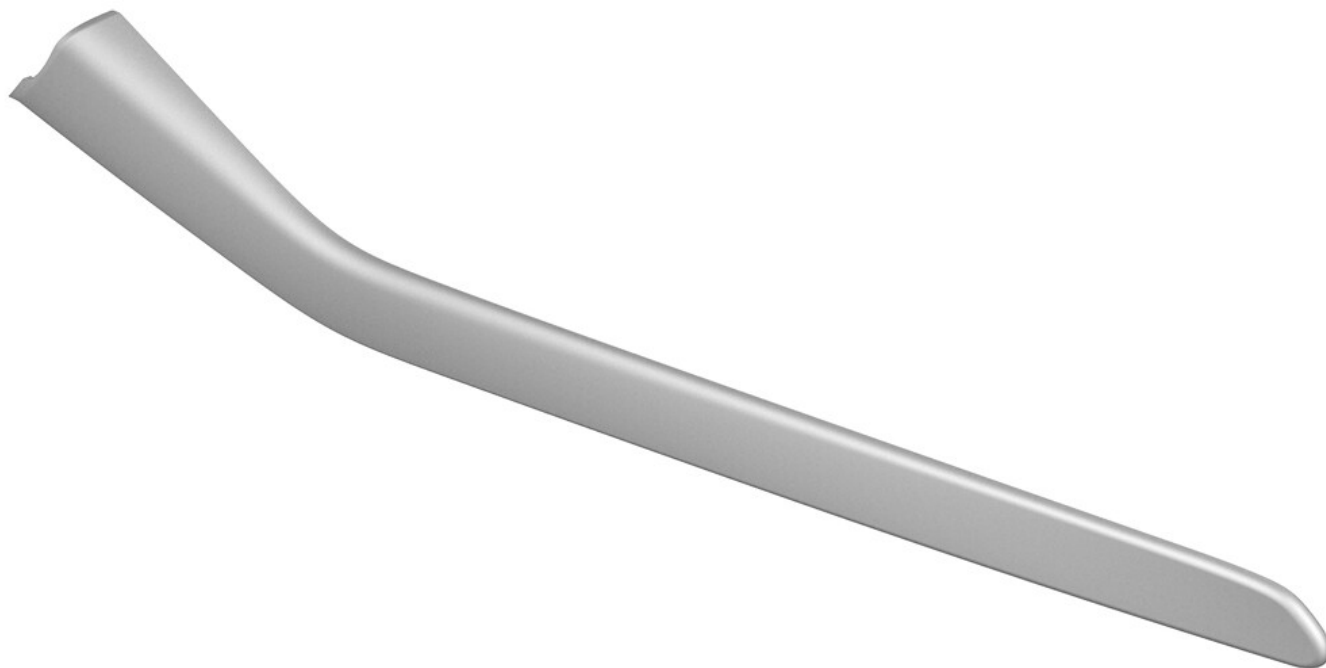


Figure 2. Clip Locations on Decor Trim





4. Repeat step 1 through step 3 to remove the RH center console decor trim, if necessary.

## Install

Installation procedure is the reverse of removal.