



EO Mini Pro Installation Guide V1.1

Table of Contents

1	Introduction	3
1.1	Quick Guide.....	3
2	Installation Instructions the EO Mini Pro	4
2.1	Physical Installation Instructions.....	4
2.2	Important Installation Information	8
3	Connecting the EO Mini Pro to the Internet	9
3.1	Connecting the EO Mini Pro to the Internet	9
4	Further Technical Support	13

1 Introduction

This document details the installation instructions for the EO Mini Pro. It details:

- How to mount and wire up the EO Mini Pro
- How to connect the EO Mini Pro to the internet

The EO Mini Pro is a joint product made up of a standard EO Mini and the communication infrastructure (called Juicenet) from eMotorwerks. Therefore this document details how to set up and configure both parts.

1.1 Quick Guide

The following steps need to be followed in order to install an EO Mini Pro

1. Physical Installation
 - a. Unpack the EO Mini Pro
 - b. Separate the two halves
 - c. Fit an appropriate cable gland
 - d. Mount the back half to the wall
 - e. Connect the power cable to the front half
 - f. Connect the three cable connectors from the front to the back
 - g. Mount the front plate to the back plate and tighten the fastening screws
 - h. Install the bungs
2. Connect the EO Mini Pro to the Juicenet Cloud
 - a. Download and install the EV Juicenet app
 - b. Login and add a new device
 - c. Apply power to the mini
 - d. Follow the onscreen instructions

The EO Mini Pro is now ready for use. Congratulations.

2 Installation Instructions the EO Mini Pro

2.1 Physical Installation Instructions

- 1) Remove the EO Mini Pro from the packaging. Undo the 4 screws in the corners and place the front of the EO Mini Pro in a safe place.
- 2)



- 3) Offer the back of the EO Mini Pro up to the installation location; make sure the surface is flat and level. Level the EO Mini Pro back and mark the position of the 4 holes. Take the EO Mini Pro back away and drill the four holes. Do NOT drill through EO Mini Pro back or back screw holes. We suggest using a 6mm masonry drill bit if affixing to brickwork etc.
- 4)



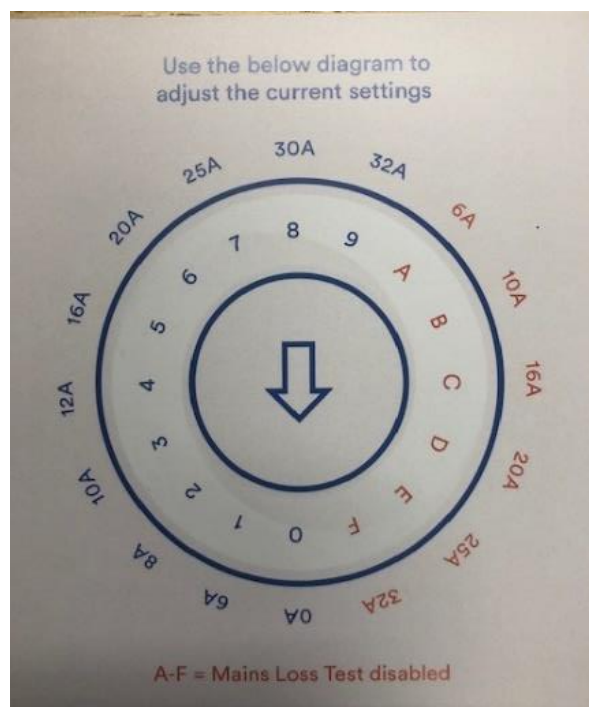
- 5) Cut the correct size hole in the bottom of the EO Mini Pro back to take the cable gland. Note that cable entry must be from below to ensure weathertightness of the enclosure.



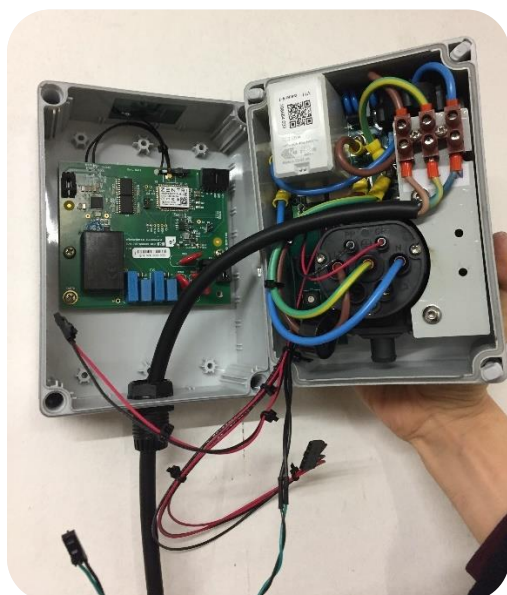
- 6) Fit the cable gland and clean out the EO Mini Pro for dust.



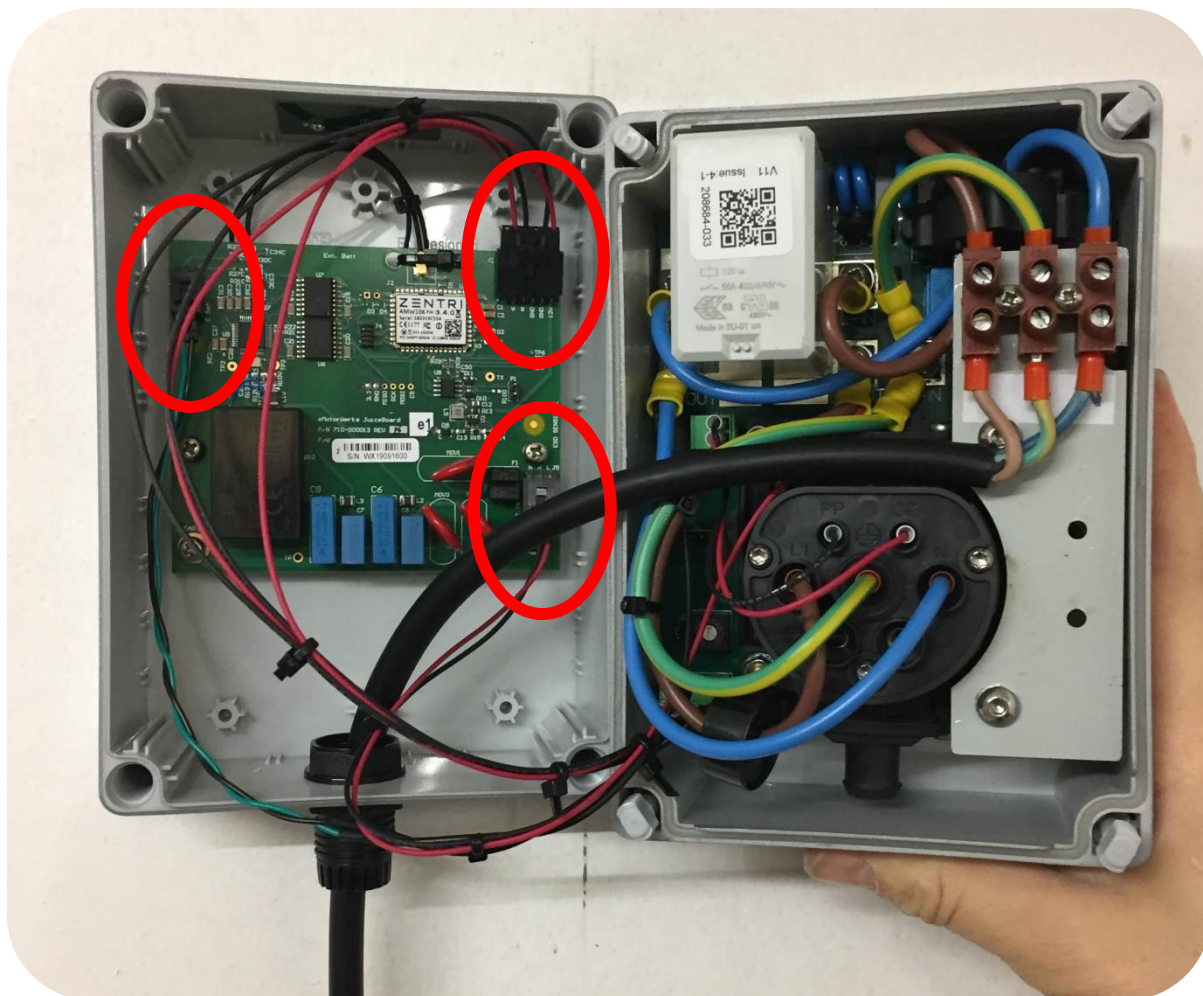
- 7) Use the rotary switch on the EO Mini to select the correct current rating



- 8) Fit the EO Mini Pro back to the wall the correct way up; make sure the EO Mini Pro back is not twisted. Strip and prepare your power cable – EO recommend crimping ferrules onto the ends of the prepared power cable. Feed the power cable through the cable gland in the EO Mini Pro back and connect to the front of the EO Mini Pro.



- 9) Connect the three sets of cables from the front of the EO Mini Pro to the circuit board in the base of the EO Mini Pro.



- 10) Position all cables so that you can close the EO Mini Pro front to the EO Mini Pro back, making sure that no cables are trapped. Secure the EO Mini Pro front to the EO Mini Pro back. Do NOT over tighten the screws. Place the 4 bungs back into the screw holes.



2.2 Important Installation Information

Characteristics of power supply input	Permanently connected to 230V AC supply
Characteristics of power supply output	Supplies 230V AC to the vehicle
Normal environmental conditions	Can be installed indoors or outdoors
Access requirements	Can be installed with no access restrictions
Mounting method	Stationary equipment intended for surface or post mounting
Protection against electric shock	Class II equipment
Charging mode	Mode 3 charging equipment. Note - Adaptors and conversion adaptors sets are not allowed to be used with the equipment. Cord extension sets are not allowed to be used.
Ventilation during supply of energy	Does not support ventilation during charging

The installer must select the RCD and earthing configuration in accordance with local regulation & best practice.

Where the EO Mini Pro includes DC leakage protection a **Type A RCD** can be fitted at the supply. Otherwise a **Type B RCD** or equivalent should be used. EO recommend a 20A supply rated supply circuit for a 16A charging station and 40A supply for on 32A charging station.

3 Connecting the EO Mini Pro to the Internet

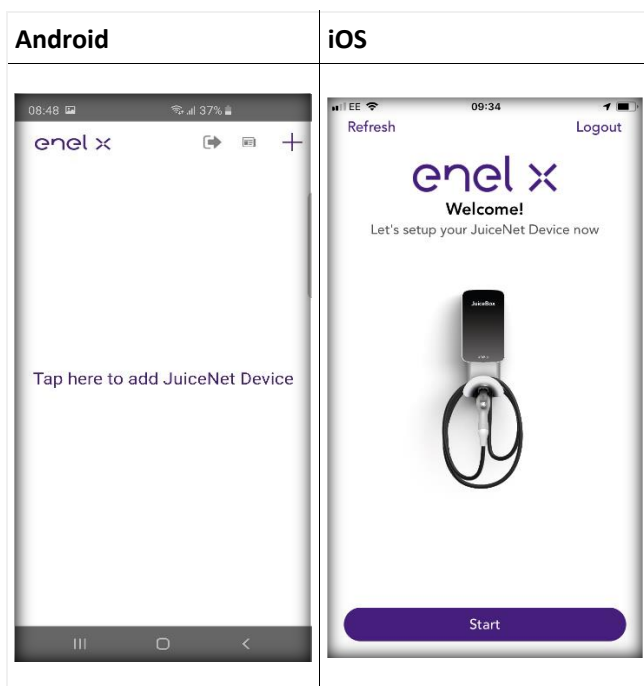
The process for connecting the EO Mini Pro can be summarised into the following steps:

- 1) Download the EV Juicenet app onto a smart phone
- 2) Using the app, connect to the wifi hotspot created by the EO Mini Pro
- 3) Configure the EO Mini Pro to join a wifi network with access to the internet

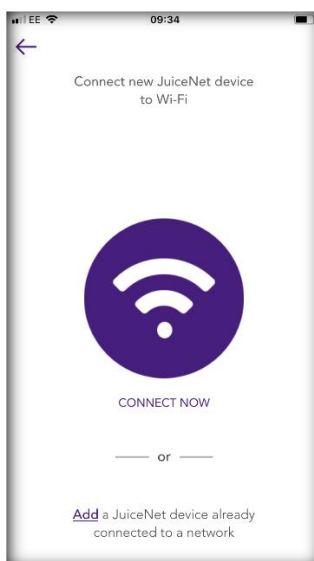
At this point it is possible to view the status of the EO Mini Pro using either the app or through the dashboard on a personal computer.

3.1 Connecting the EO Mini Pro to the Internet

- 1) Install the EV JuiceNet app onto your mobile device.
- 2) Log into the EV JuiceNet app. If you do not have an account, create one.
- 3) Select Add JuiceNet Device on Android devices or Start on iOS devices.



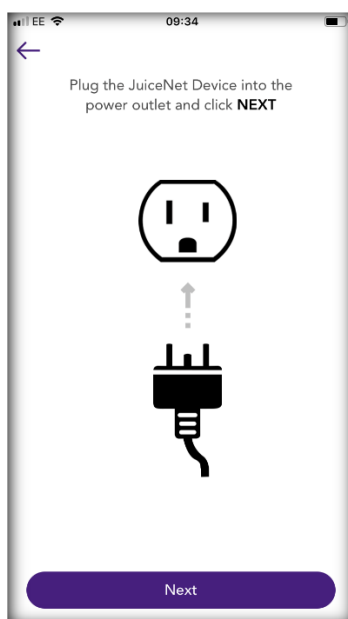
- 4) Select Connect Now.



- 5) Have the WiFi network password ready, then turn off the circuit breaker for the EO Mini Pro. In the app, select Next.

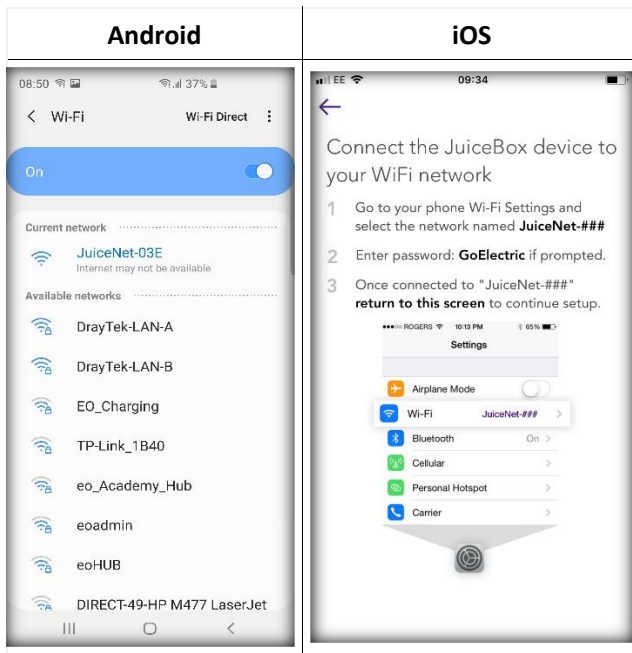


- 6) Turn on the circuit breaker for the EO Mini Pro. In the app, select Next



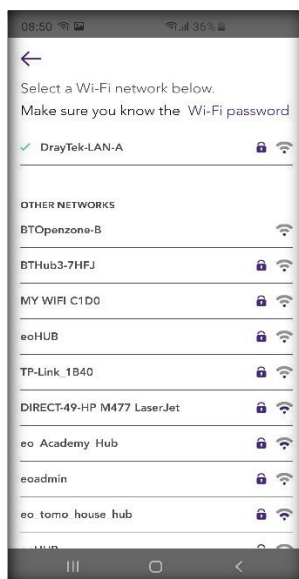
Note: After powering the EO Mini Pro, steps 7 through 9 must be completed within 2 minutes.

- 7) Connect to the EO Mini Pro's WiFi network.
- Navigate to the WiFi settings on your mobile device. Connect to the "JuiceBox-###" or "JuiceNet-###" WiFi network. If the network requires a password, use the password "GoElectric" (case-sensitive).
- Note: The actual name of the network varies by device, such as "JuiceBox-123".

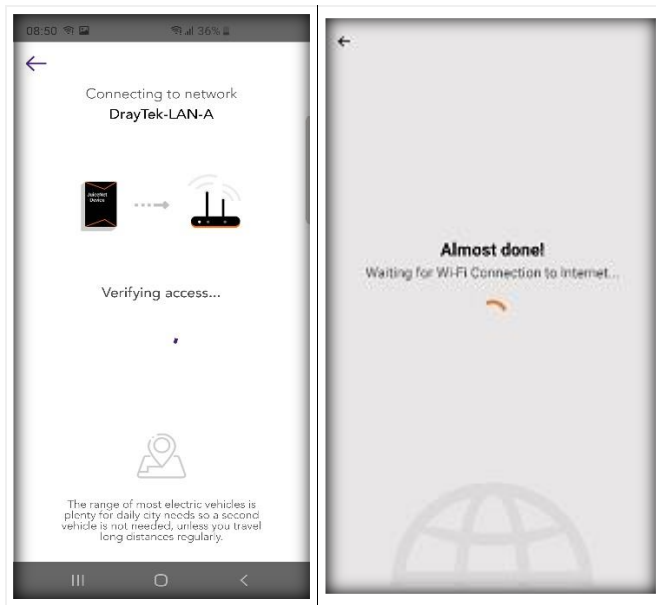


b. Return to the JuiceNet app.

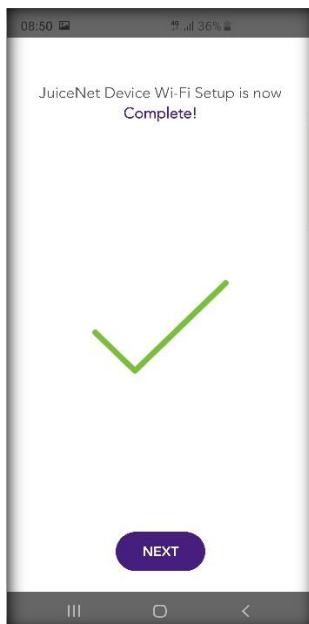
- 8) In the EV JuiceNet app, select the preferred local WiFi network.
- 9) Enter the WiFi network password, if necessary, then select Connect JuiceNet device to WiFi.



The app connects the JuiceBox to the WiFi network.



10) After the app confirms that WiFi setup is complete, select Next to return to the app home screen.



Customize your experience by following the onscreen app instructions to select your vehicle and charging profile, or navigate to the JuiceNet dashboard on a personal computer at dashboard.emotorwerks.com.

For a complete video walkthrough of the app, refer to <http://docs.juice.net/Videos/AppWalkthrough.html>.

For details on how to use and configure the EO Mini Pro then please refer to the EO Mini Pro User Guide. However, for now the EO Mini Pro is installed and operational. Congratulations!

4 Further Technical Support

All EO Charging technical documentation is published in the EO Resource Centre, this is found at:
<https://www.eocharging.com/service-support/>

The EO Support team can be reached at:

- Email: support@eocharging.com
- Phone: +44 (0) 333 77 20383