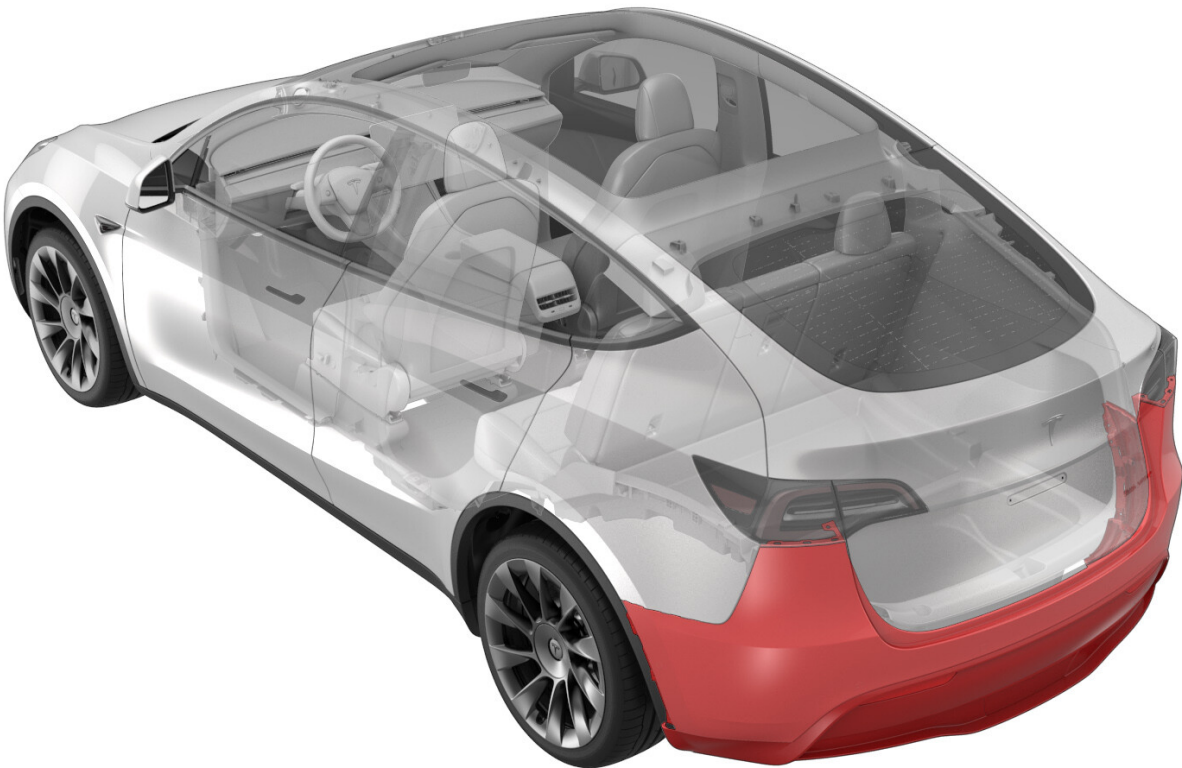


Last modified: 20/10/2021 15:11:48

Fascia - Rear (Remove and Install)



Correction code 10013001
FRT 0.55

- NOTE:** Unless otherwise explicitly stated in the procedure, the above correction code and FRT reflect all of the work required to perform this procedure, including the linked procedures. **Do not stack correction codes unless explicitly told to do so.**
- NOTE:** See [Flat Rate Times](#) to learn more about FRTs and how they are created. To provide feedback on FRT values, email LaborTimeFeedback@tesla.com.
- NOTE:** See [Personal Protection](#) to make sure wearing proper PPE when performing the below procedure.

Torque Specifications

Table 1. Torque Specifications: [Fascia - Rear \(Remove and Install\)](#)

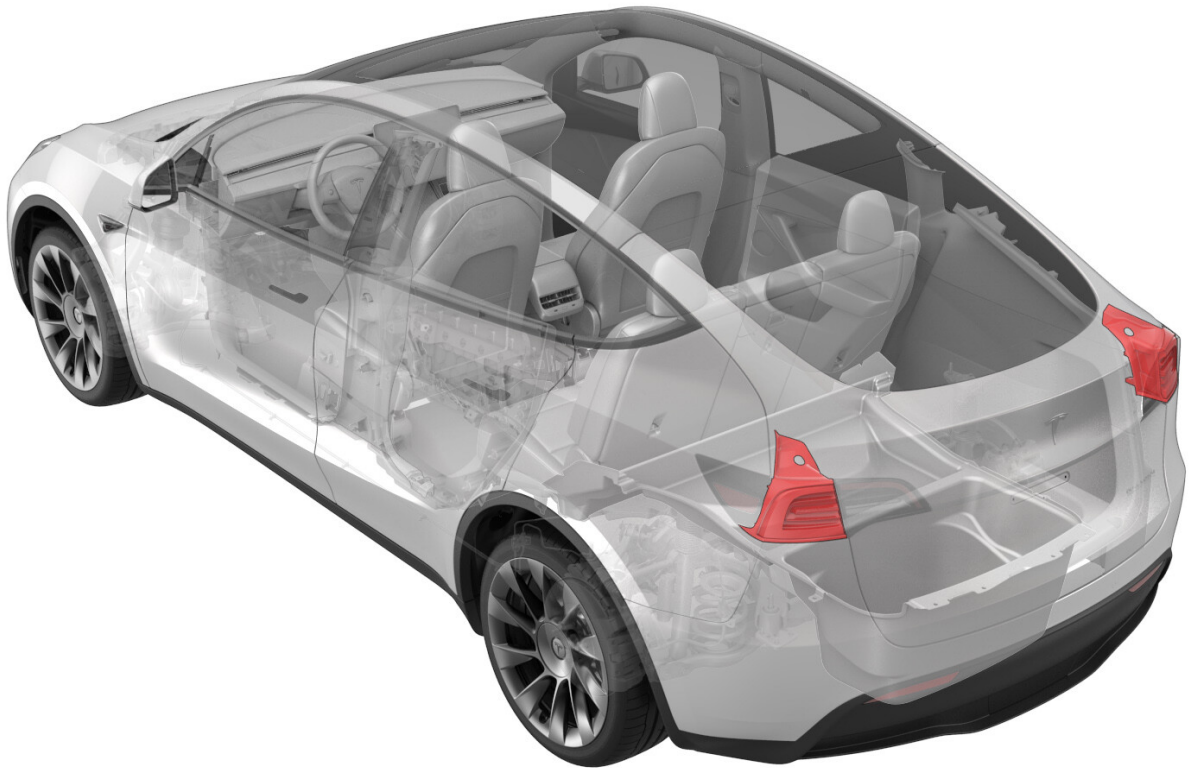
Description	Torque Value	Recommended Tools	Reuse/Replace	Notes
Bolt that attaches the corner of the rear fascia to the body	 4 Nm (2.9 ft-lbs)	<ul style="list-style-type: none"> 10 mm hex 	Reuse	
Bolts that attach the rear diffuser to the body	 4 Nm (2.9 ft-lbs)	<ul style="list-style-type: none"> 10 mm socket 2 in extension 	Reuse	
Bolt that attaches the side of the rear fascia to the body	 4 Nm (2.9 ft-lbs)	<ul style="list-style-type: none"> 8 mm hex 4 in extension 	Reuse	

Remove

1. Remove the LH and RH taillights. See [Taillight - LH \(Remove and Replace\)](#)  .

Last modified: 25/10/2022 10:36:59

Taillight - LH (Remove and Replace)



Correction code 17402002

FRT 0.25

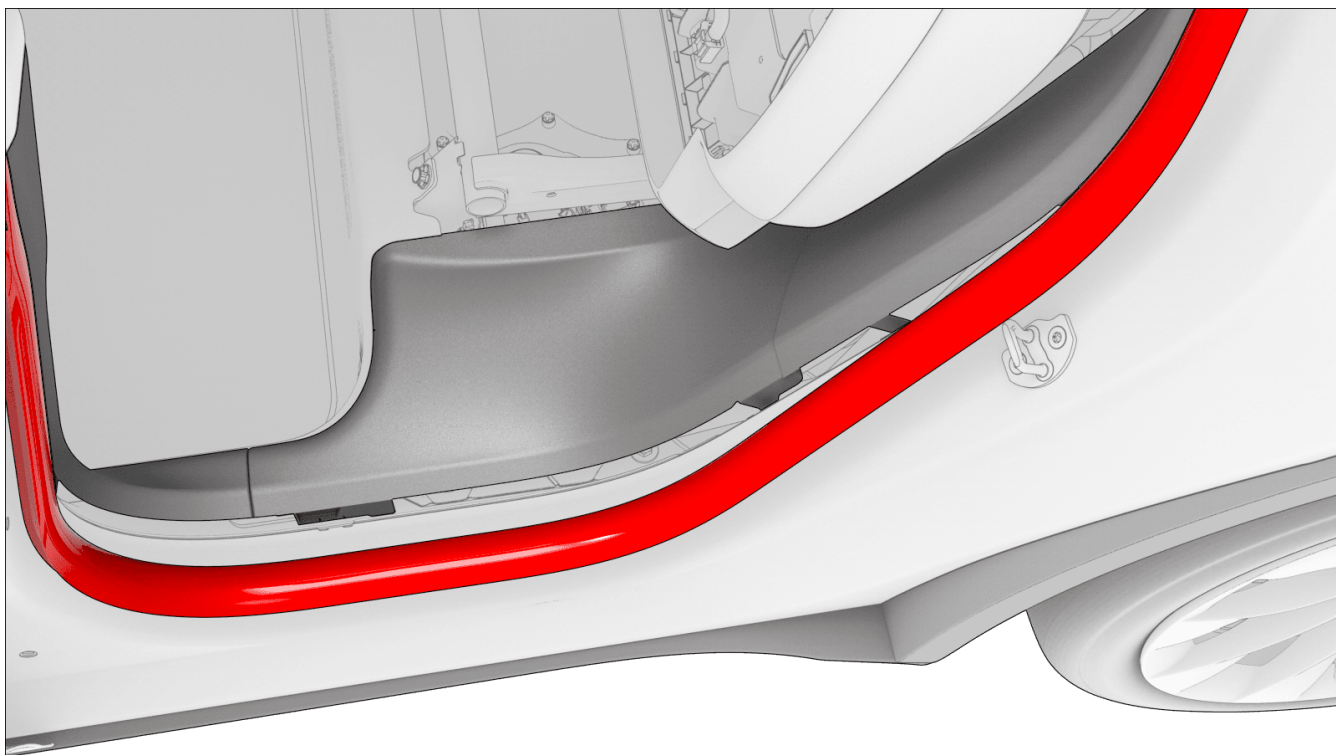
NOTE: Unless otherwise explicitly stated in the procedure, the above correction code and FRT reflect all of the work required to perform this procedure, including the linked procedures. **Do not stack correction codes unless explicitly told to do so.**

NOTE: See [Flat Rate Times](#) to learn more about FRTs and how they are created. To provide feedback on FRT values, email LaborTimeFeedback@tesla.com.

NOTE: See [Personal Protection](#) to make sure wearing proper PPE when performing the below procedure.

Remove

1. Open the LH rear door.
2. Release the portion of the LH rear door seal that overlaps the LH lower c-pillar trim.



3. Fold down the LH 2nd row 60 seatback.

Note

Protect the seat back upholstery if necessary.

4. Remove the rear trunk load floor. See [Trunk Load Floor - Rear \(Remove and Replace\)](#) ○ .

5. Remove the front trunk load floor. See [Trunk Load Floor - Front \(Remove and Replace\)](#) ○ .

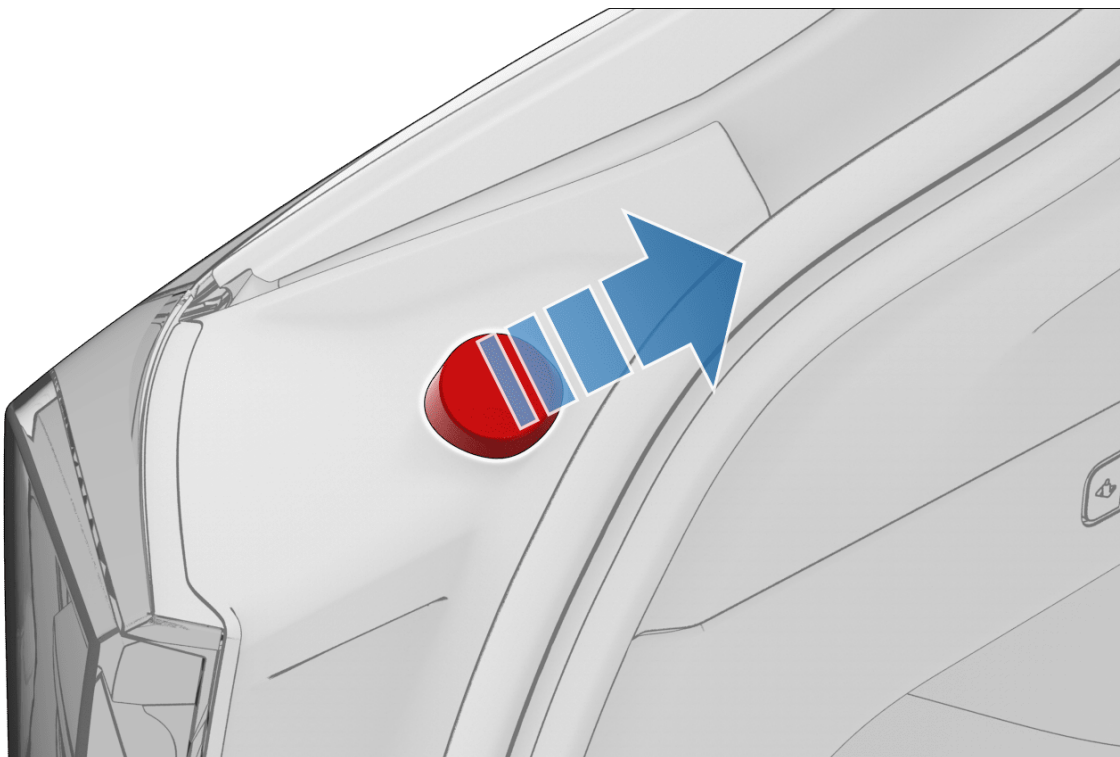
6. Remove the trunk sill trim. See [Trim - Sill - Trunk \(Remove and Replace\)](#) ○ .

7. Remove the LH trunk load floor bracket. See [Bracket - Trunk Load Floor - LH \(Remove and Replace\)](#) ○ .

8. Remove the LH trunk pocket bracket. See [Bracket - Trunk Pocket - LH \(Remove and Replace\)](#) ○ .

9. Remove the LH trunk side trim. See [Trim - Side - Trunk - LH \(Remove and Replace\)](#) ○ .

10. Pull up on the LH liftgate bump stop to remove it from the assembly.



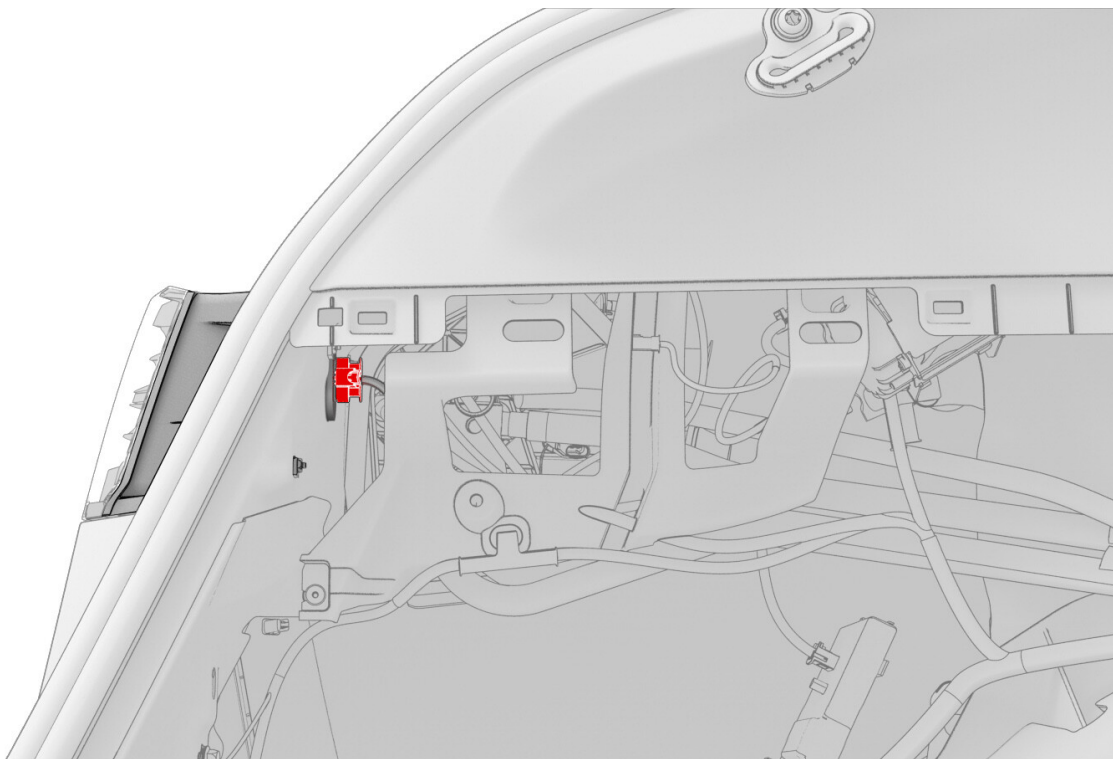
11. Release the connector lock, and then disconnect the electrical harness from the taillight connector.

**CAUTION**

DO NOT push down on the red locking tab. Pull the tab away from the connector until the connector is unlocked, and then continue pulling to release the connector.

**CAUTION**

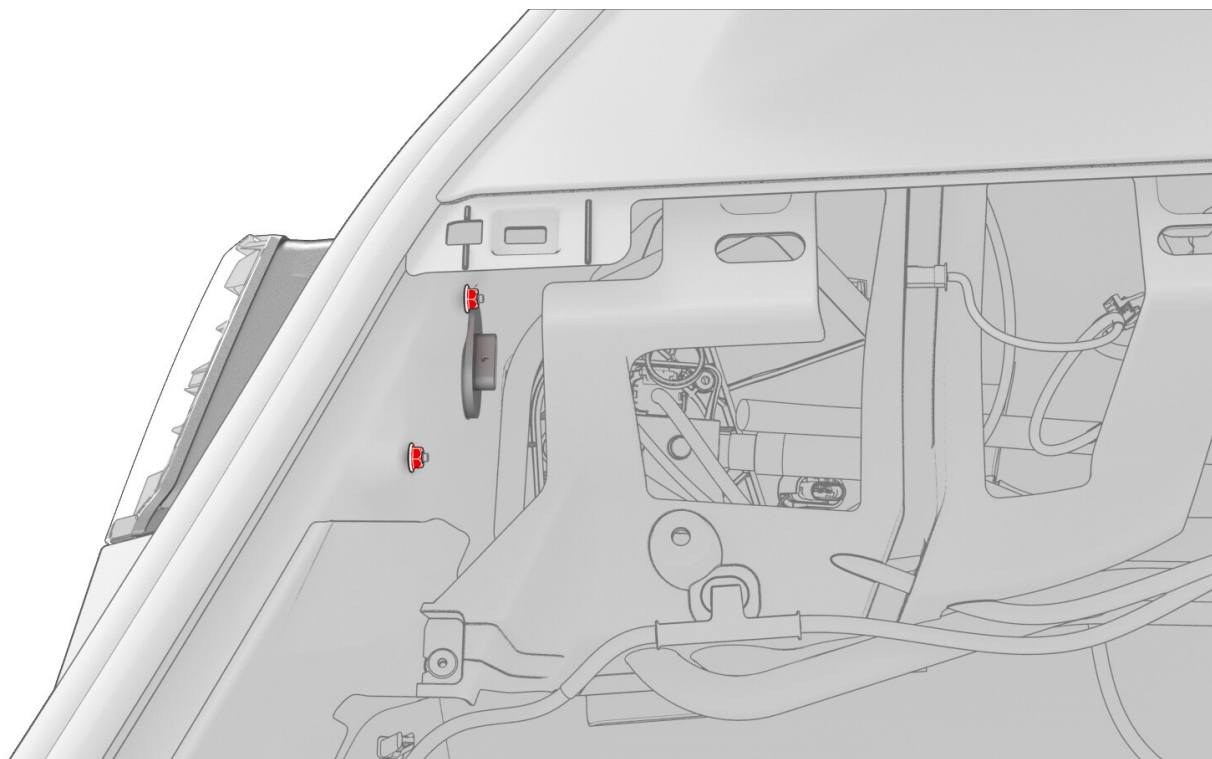
If the taillight must be replaced because of water ingress, place a shop towel under the taillight connector to prevent damage to other electrical components.



12. Remove the nuts that attach the taillight to the vehicle.

Tip: Use of the following tool(s) is recommended:

- 8 mm 12-point deep socket
- ¼ in std ratchet
- ¼ in torque wrench (installation only)

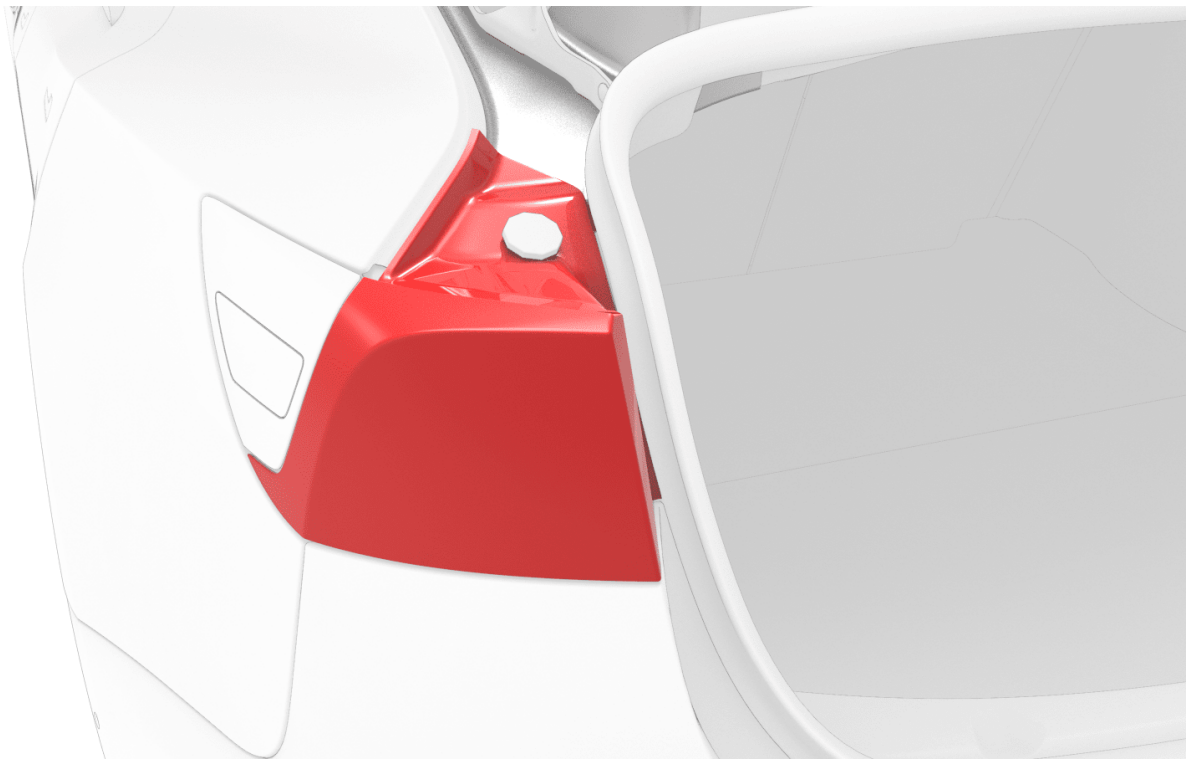


13. Remove the LH taillight assembly from the vehicle.



Install

1. If the same taillight is to be reinstalled, replace the gaskets from around each taillight mounting bolt (x2) and the taillight electrical connector (x1).
2. Position the LH taillight studs into the grommets, and then install the taillight onto the body.



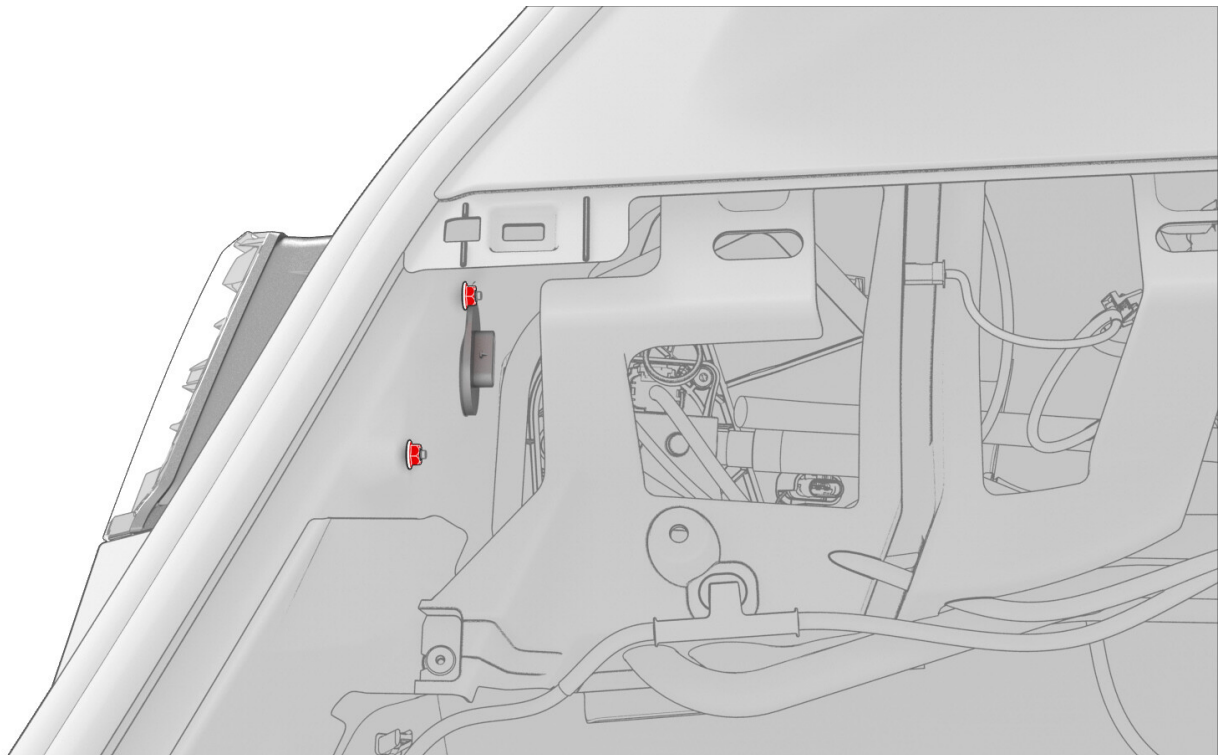
3. Install the nuts (x2) that attach the taillight to the vehicle.



3.2 Nm (2.4 ft-lbs)

Tip: Use of the following tool(s) is recommended:

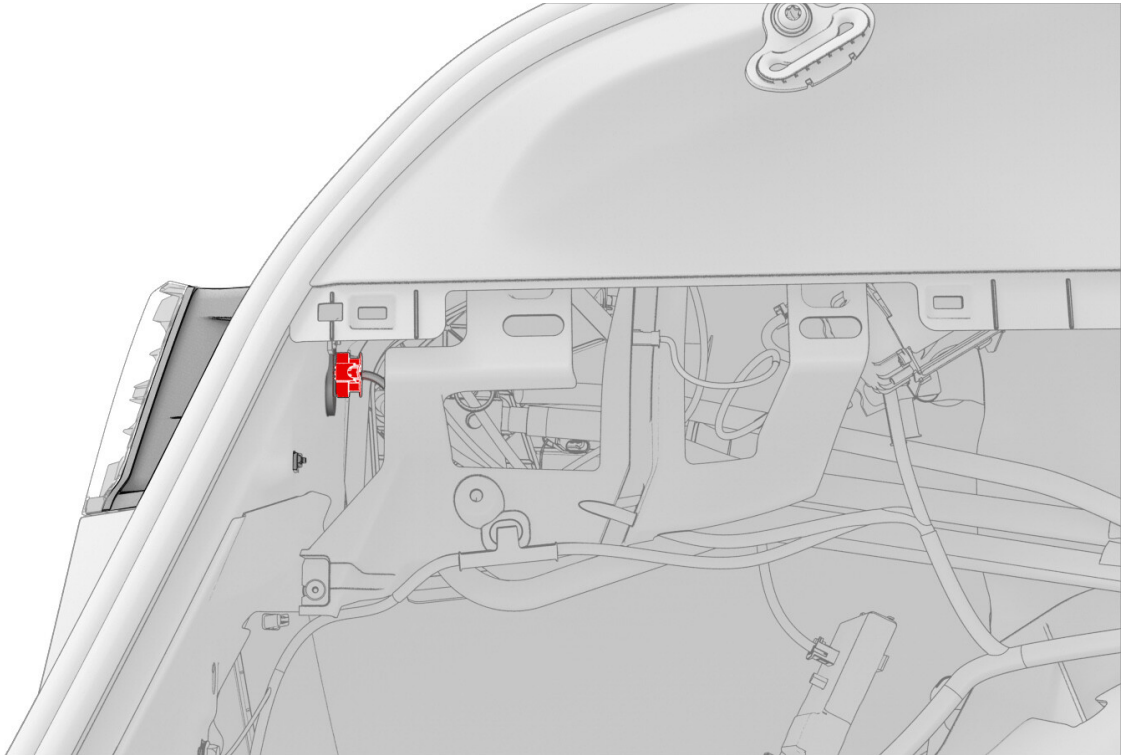
- 8 mm 12-point deep socket
- ¼ in std ratchet
- ¼ in torque wrench (installation only)



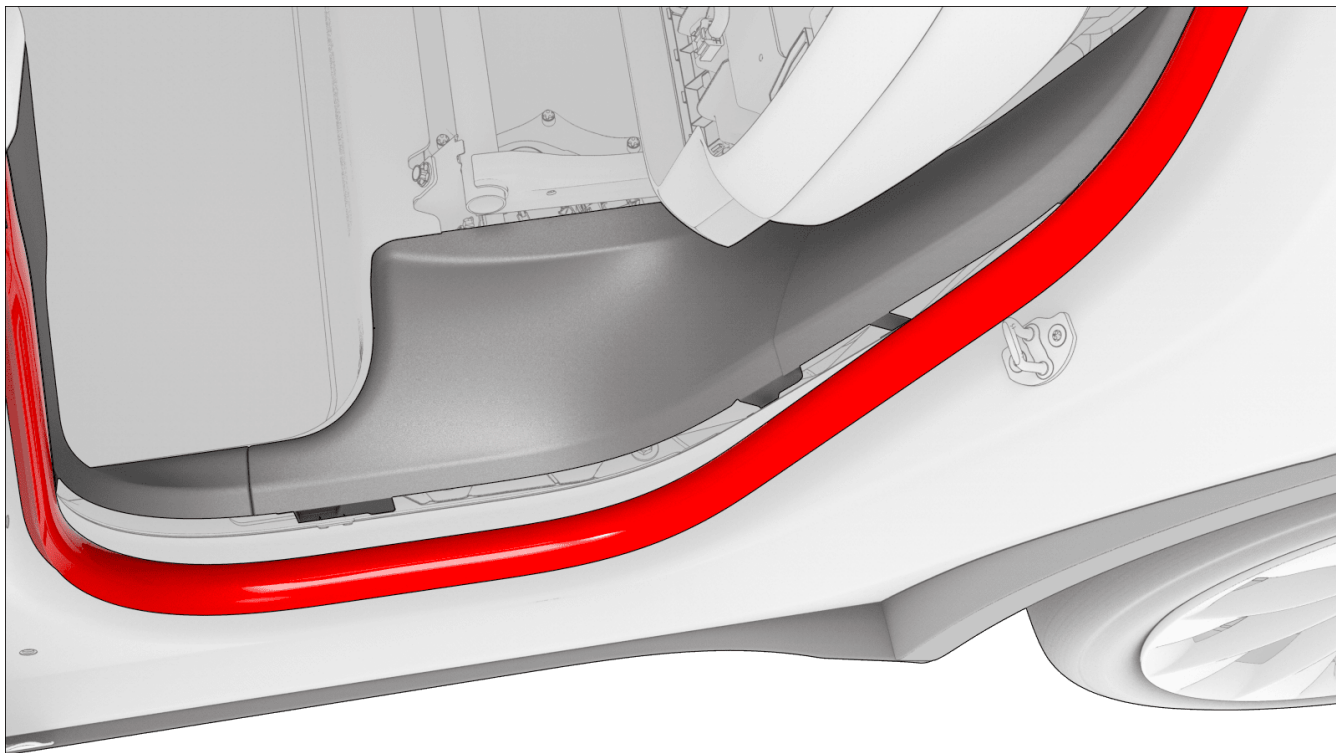
4. Connect the electrical harness to the taillight connector, and then engage the connector lock.

CAUTION


If the connector has a red locking tab: Push the red locking tab into the connector to engage the connector lock.



5. Align the LH liftgate bump stop onto the taillight assembly, and then press down on the bump stop to install it to the assembly.
6. Install the LH trunk side trim. See [GUID-6E5F19EE-348A-4512-A3A7-D5094875E651.html](#) ○ .
7. Install the LH trunk pocket bracket. See [Bracket - Trunk Pocket - LH \(Remove and Replace\)](#) ○ .
8. Install the LH load floor bracket. See [Bracket - Trunk Load Floor - LH \(Remove and Replace\)](#) ○ .
9. Install the trunk sill trim. See [Trim - Sill - Trunk \(Remove and Replace\)](#) ○
10. Install the front trunk load floor. See [Trunk Load Floor - Front \(Remove and Replace\)](#) ○ .
11. Install the rear trunk load floor. See [Trunk Load Floor - Rear \(Remove and Replace\)](#) ○ .
12. Close the liftgate.
13. Reseat the portion of the LH rear door seal that overlaps the LH lower c-pillar trim.



14. Close the LH rear door.

15. Connect a laptop with Toolbox 3 to the vehicle. See .

16. In Toolbox, perform one of the following according to the taillight that was replaced.

- **LH Taillight** - Click the **Actions** tab, type "VCLEFT" in the search field, click on **TEST-RESET_VCLEFT**, click **Run**, and then allow the routine to complete.
- **RH Taillight** - Click the **Actions** tab, type "VCRIGHT" in the search field, click on **TEST-RESET_VCRIGHT**, click **Run**, and then allow the routine to complete.

17. Disconnect the laptop with Toolbox 3 from the vehicle. See .

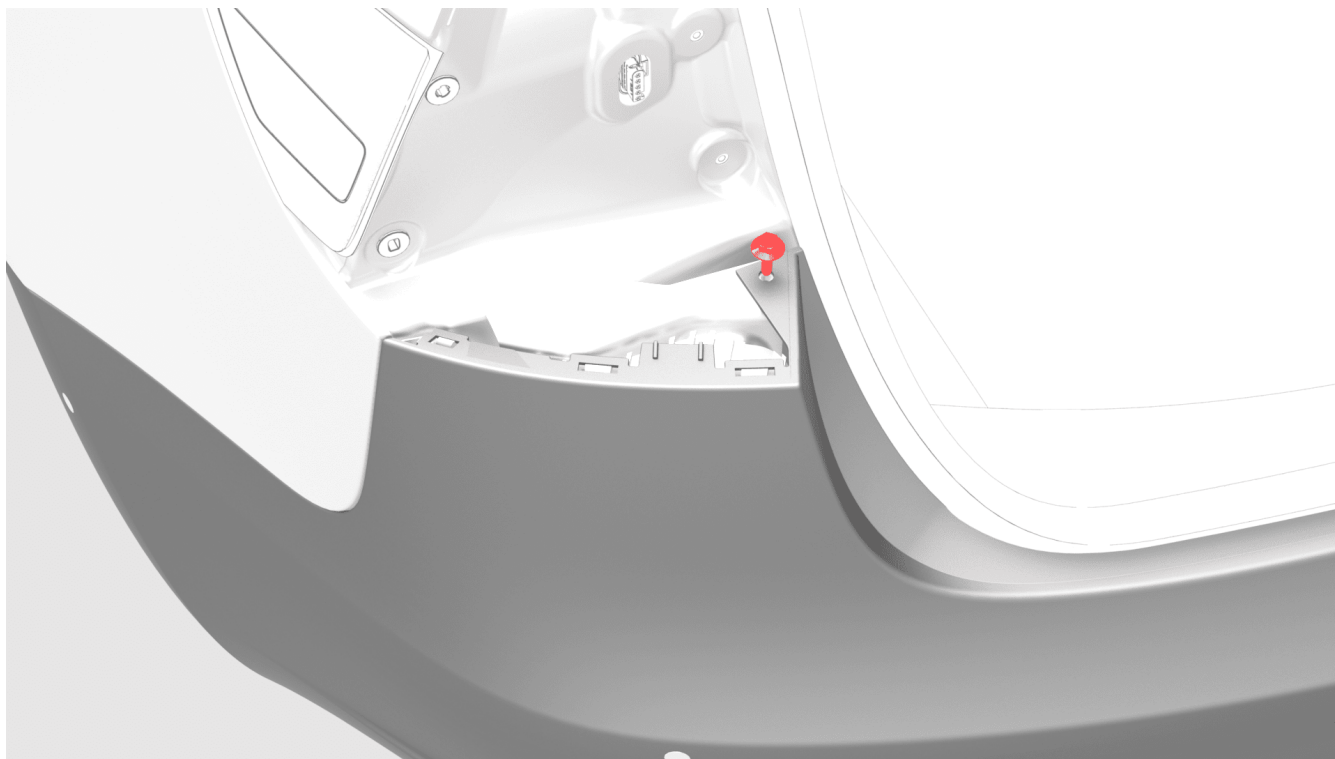
3. On each side of the vehicle, remove the bolt that attaches the corner of the rear fascia to the body.



4 Nm (2.9 ft-lbs)

Tip: Use of the following tool(s) is recommended:

- 10 mm hex

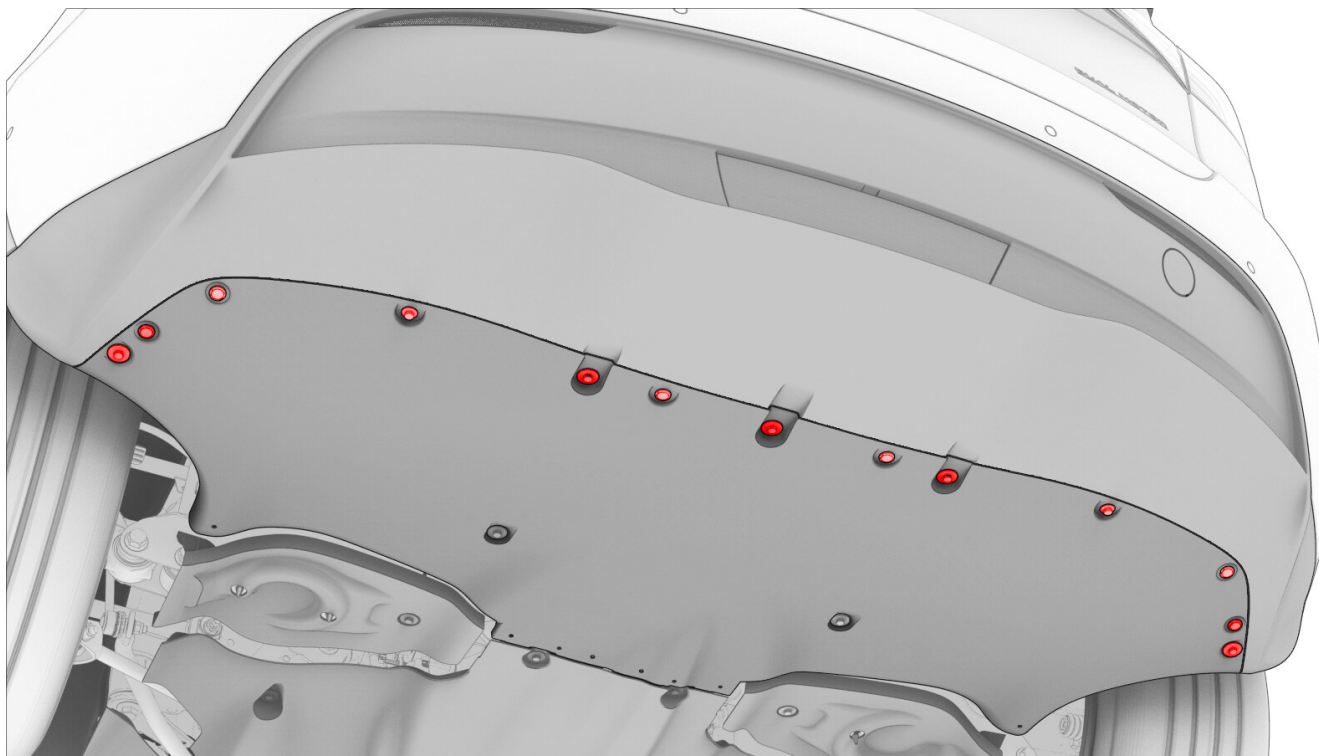


4. Remove the bolts (x7) and clips (x6) that attach the rear fascia to the rear diffuser.

 **4 Nm (2.9 ft-lbs)**

Tip: Use of the following tool(s) is recommended:

- 10 mm socket
- 2 in extension



5. Remove the LH rear fender garnish. See [Garnish - Fender - Rear - LH \(Remove and Replace\)](#) .

Last modified: 06/03/2020 09:41:12

Garnish - Fender - Rear - LH (Remove and Replace)



Correction code 12201402

FRT 0.05

NOTE: Unless otherwise explicitly stated in the procedure, the above correction code and FRT reflect all of the work required to perform this procedure, including the linked procedures. **Do not stack correction codes unless explicitly told to do so.**

NOTE: See [Flat Rate Times](#) to learn more about FRTs and how they are created. To provide feedback on FRT values, email LaborTimeFeedback@tesla.com.

NOTE: See [Personal Protection](#) to make sure wearing proper PPE when performing the below procedure.

Remove

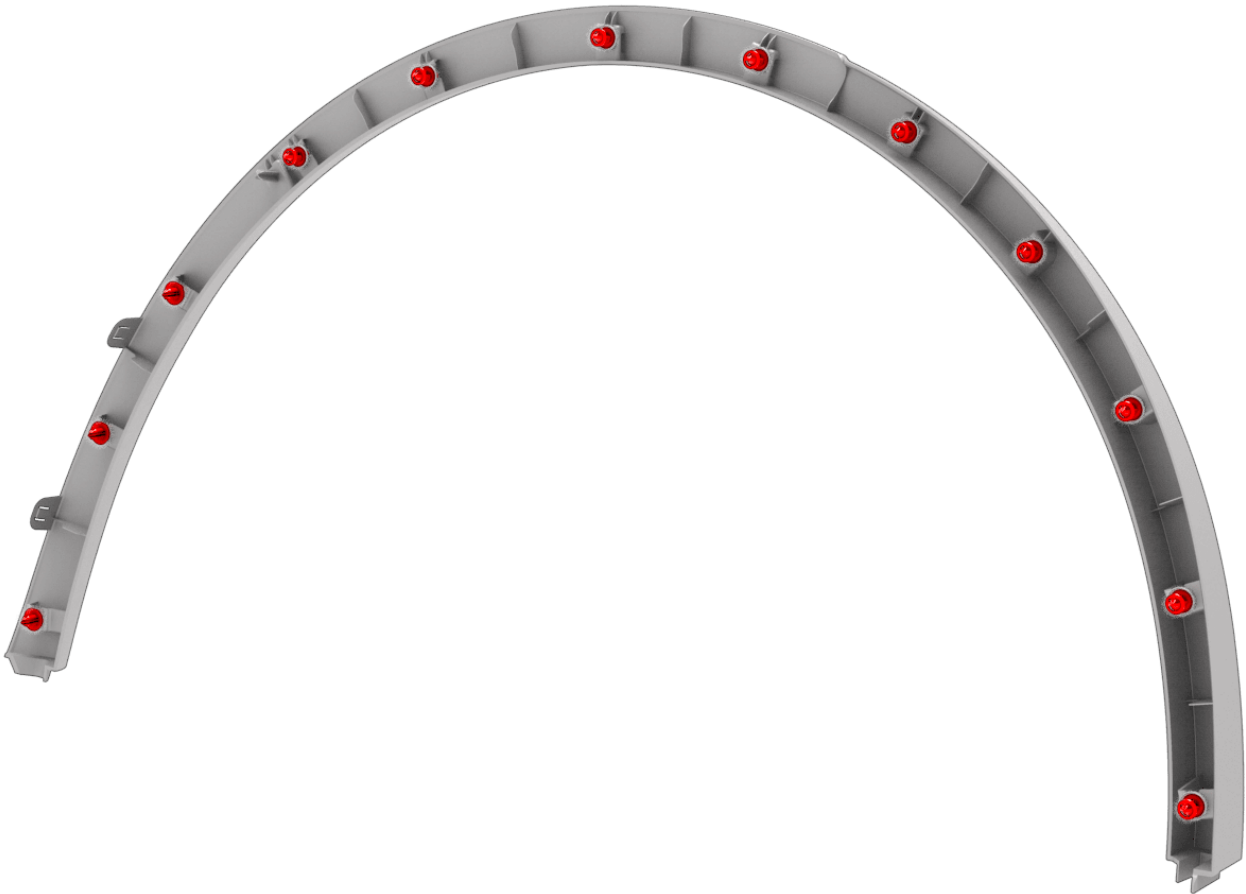
1. Release the clips (x12) that attach the LH rear fender garnish to the vehicle, and then remove the garnish from the vehicle.

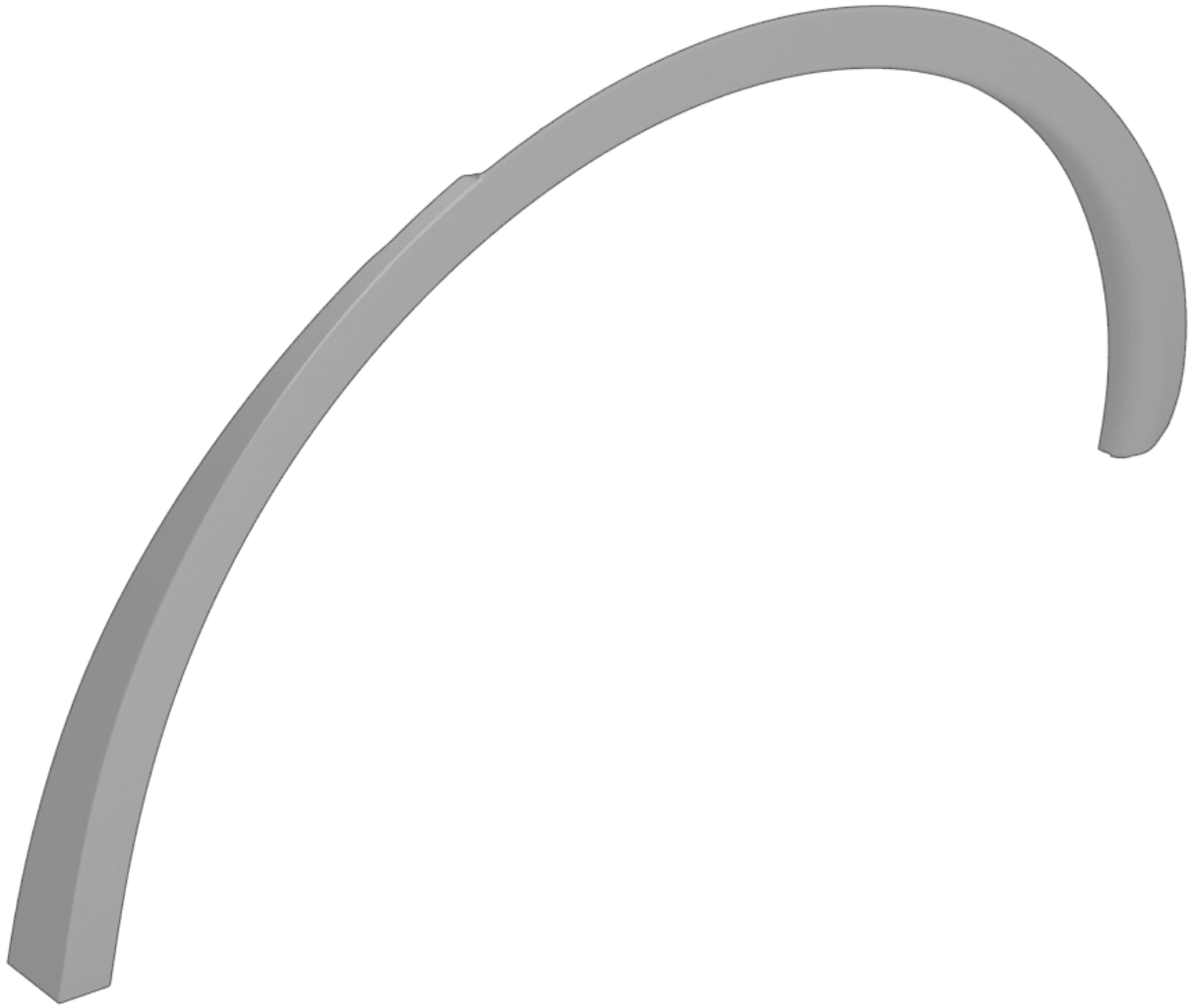
Tip: Starting from the center of the LH rear fender garnish, carefully pull the garnish away from the vehicle and work outward.



CAUTION

Be careful not to bend the tabs that attach the rear of the garnish to the rear fascia.





Install

Installation procedure is the reverse of removal, except for the following:

- Position the rear fender garnish alignment tabs in the rocker panel and rear diffuser before installing the clips.
- Once the rear fender garnish alignment tabs are installed, install the clips at each end of the fender garnish and work toward the center.



CAUTION

Be careful not to bend the tabs that attach the rear of the garnish to the rear fascia.

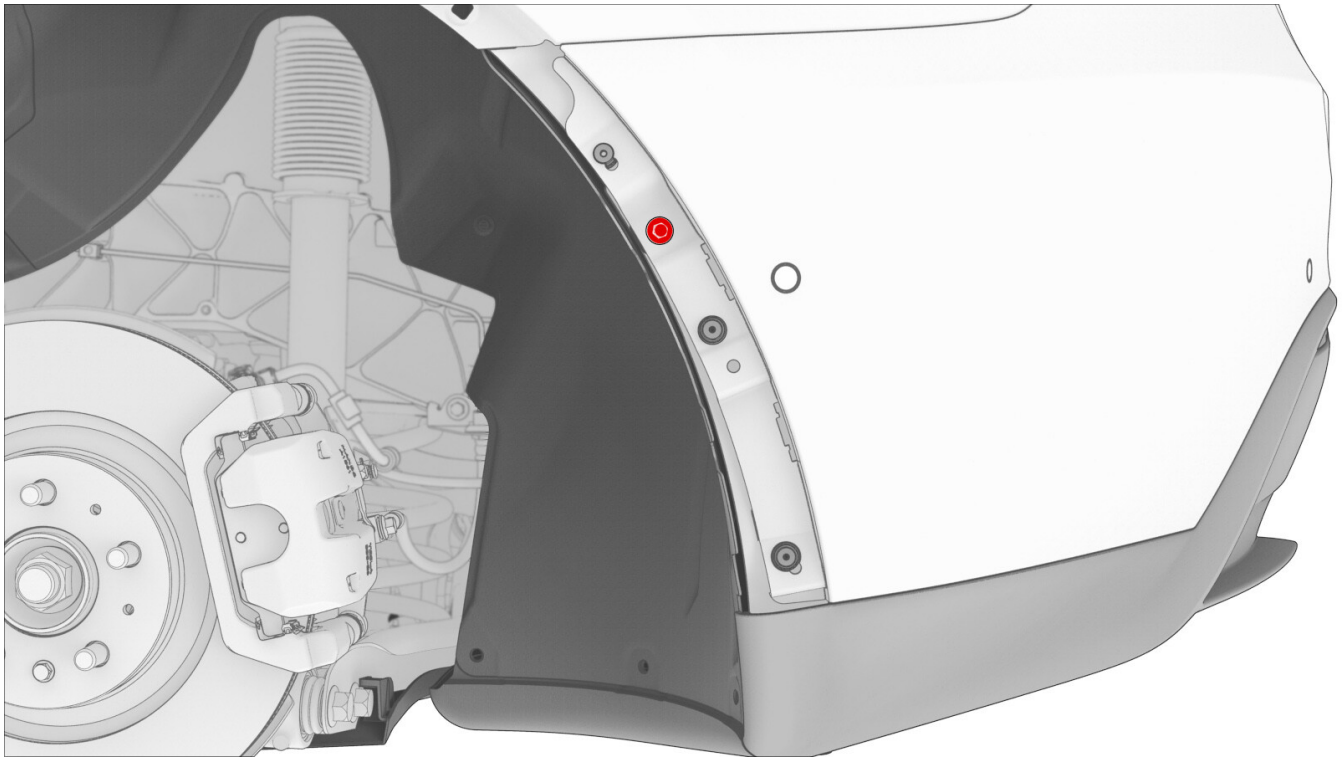
7. Remove bolt that attaches the LH side of the rear fascia to the body.



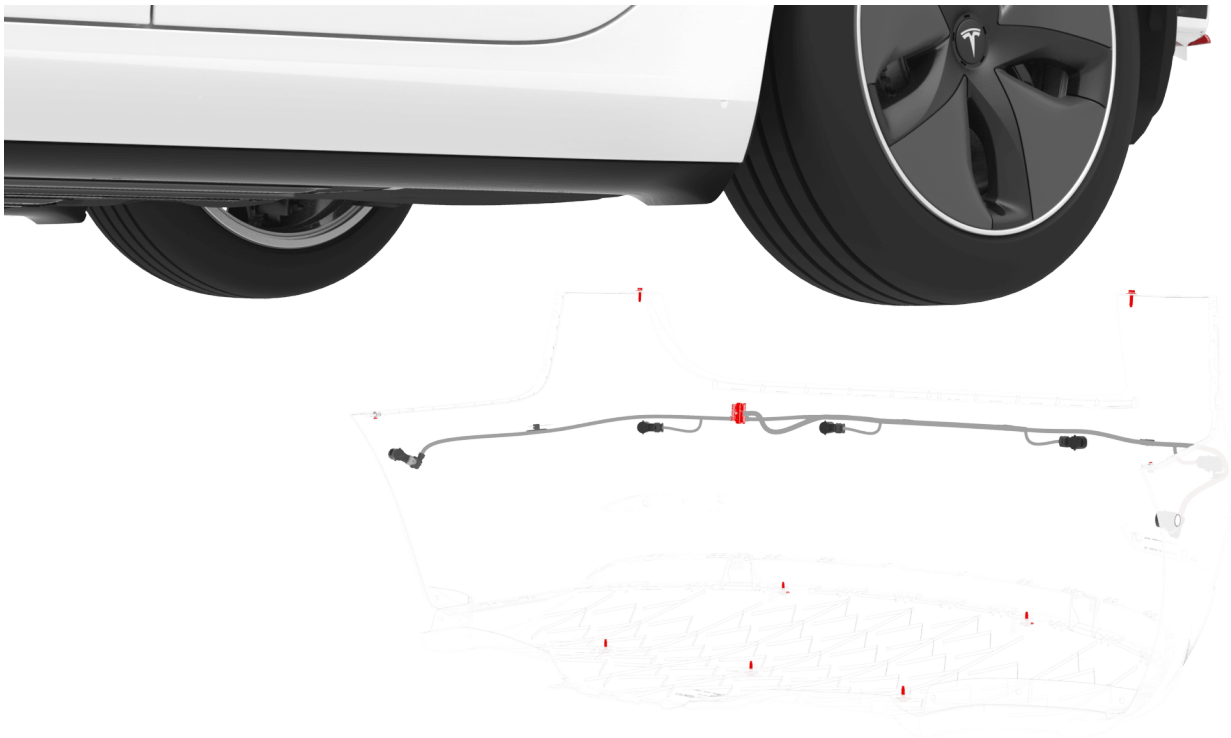
4 Nm (2.9 ft-lbs)

Tip: Use of the following tool(s) is recommended:

- 8 mm hex
- 4 in extension



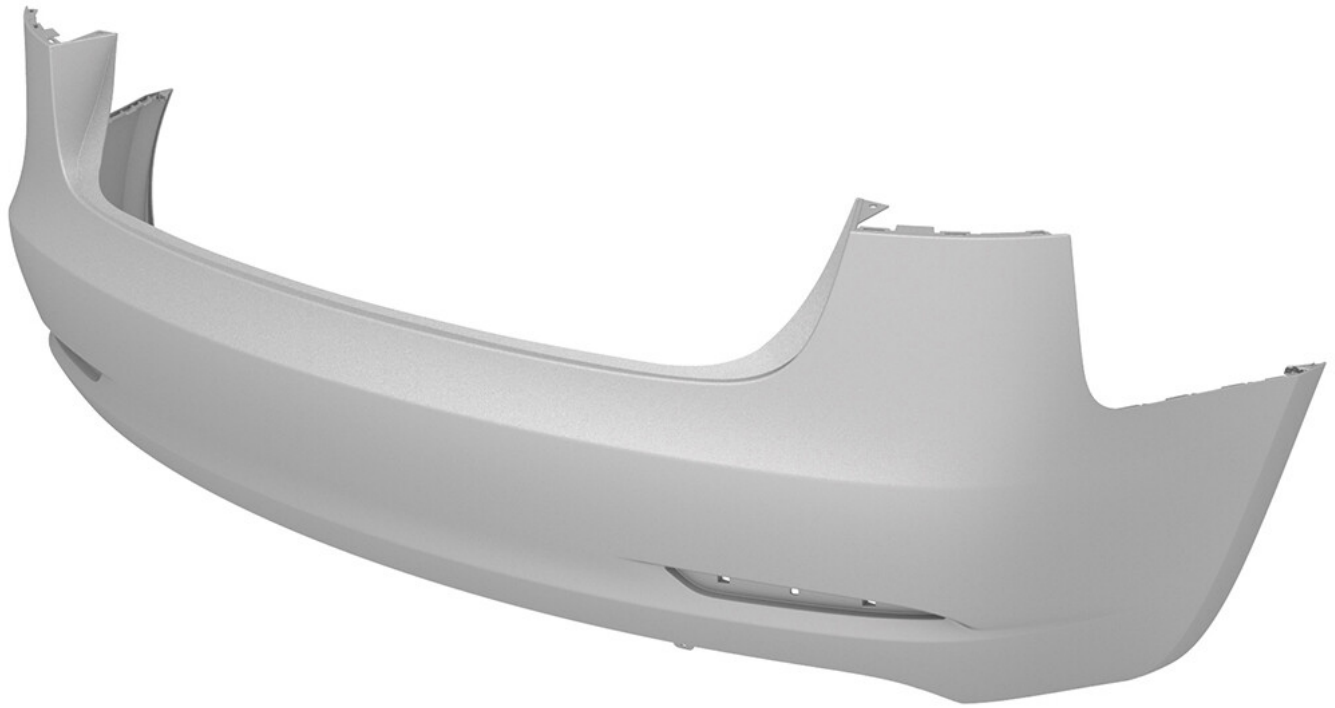
8. Repeat steps 4 and 5 for the RH side of the vehicle.
9. Disconnect the rear fascia electrical harness.



10. With an assistant, remove the rear fascia from the vehicle.

**CAUTION**

Carefully remove the rear fascia from the body so that the corner fastener clips do not damage the rear quarter panel.



Install

Installation procedure is the reverse of removal.