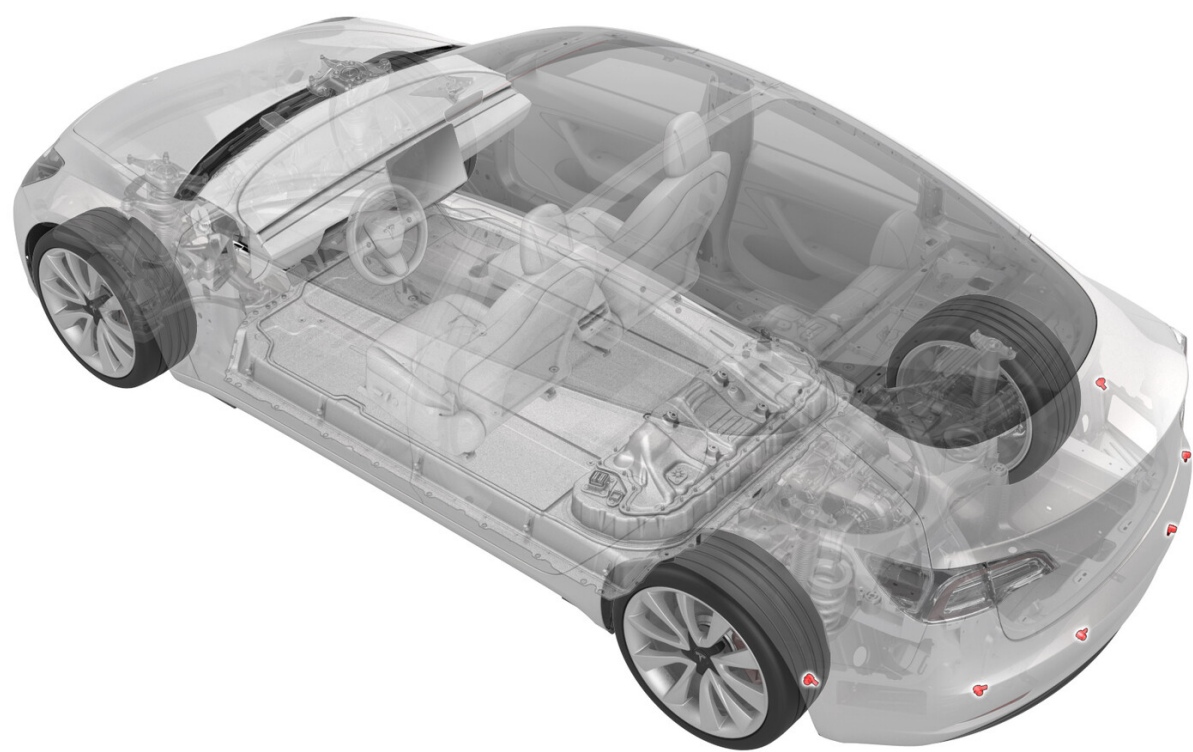


Last modified: 29/09/2021 18:04:45

# Sensor - Parking Distance - Outer - Rear (Remove and Replace)



Correction code 17271122  
FRT 0.10

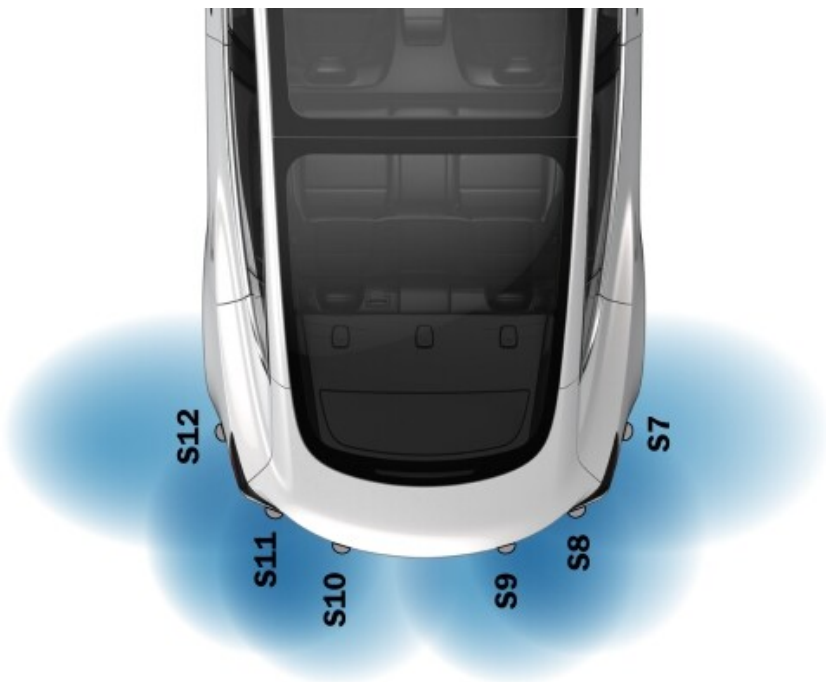
**NOTE:** Unless otherwise explicitly stated in the procedure, the above correction code and FRT reflect all of the work required to perform this procedure, including the linked procedures. **Do not stack correction codes unless explicitly told to do so.**

**NOTE:** See [Flat Rate Times](#) to learn more about FRTs and how they are created. To provide feedback on FRT values, email [LaborTimeFeedback@tesla.com](mailto:LaborTimeFeedback@tesla.com).

**NOTE:** See [Personal Protection](#) to make sure wearing proper PPE when performing the below procedure.

**Note**

Outer parking distance sensors are S7 and S12. Inner parking distance sensors are S8, S9, S10 and S11. See [Sensor - Parking Distance - Inner - Rear \(Remove and Replace\)](#).



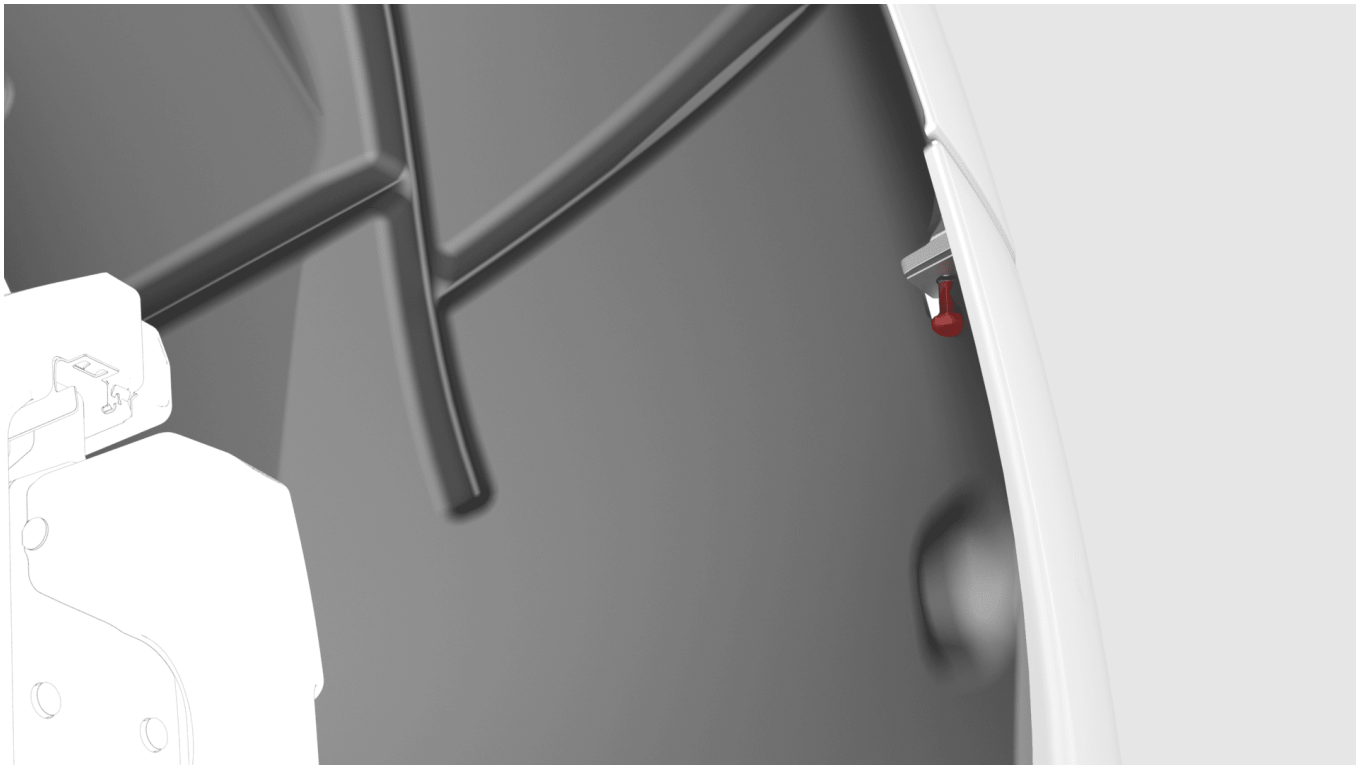
## Remove

1. Remove bolt that attaches the LH side of the rear fascia to the body.

 **2 Nm (1.5 ft-lbs)**

Tip: Use of the following tool(s) is recommended:

- Torx T25 socket
- 2 in extension



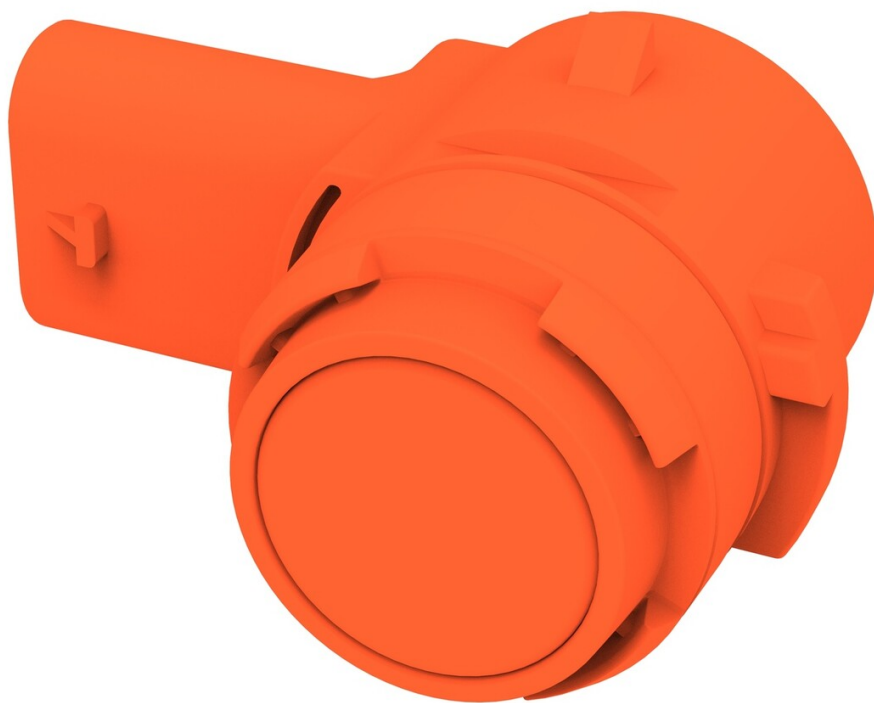
2. Pull the rear fascia outward to allow clearance to the rear parking sensor.
3. Disconnect the electrical harness from the rear parking distance sensor connector.

**Note**

DO NOT push down on the red locking tab. Pull the tab away from the connector until the connector is unlocked, and then continue pulling to release the connector.



4. Release the tabs that attach the rear parking distance sensor to the rear fascia, and then remove the sensor from the rear fascia.



## Install

Installation procedure is the reverse of removal, except for the following:

Push the red locking tab into the connector to engage the locking mechanism. DO NOT push down or pull up on the red locking tab.

Consult the parts catalog to determine the type of parking sensor installed on the vehicle. If the vehicle is equipped with Tesla USS, run the following [Toolbox 3.0](#) routines in the order listed:

1. TEST-RESET\_PARK
2. PROC\_USM\_REAR\_PROGRAM-USS-ADDRESSES