

## Other (American car) TESLA Roadster

Body price **5.555** million yen (tax included)  
 Total payment ( **estimate** ) ￥ **582.4** million (tax included)

問合せ・見積依頼

### TESLA Roadster Japan Signature Sport 2.0 Package

Motor Output 400Nm (40.8kgm)

Sport Option Full Equipment Version "Signature Sport"

Exterior: Op Belly Orange

Interior: Op Premium Leather Interior

\* One Owner

\* Regular Dealer Car

Signature Badge

Premium Paint

Clear Coat Carbon Fiber Body Accent

Solar Guard Front Window

Premium Leather Interior & Carbon Fiber Accent

Upgrade Audio System

Sports Suspension (Bilstein)

Black Ford Aluminum Wheel (Black) with 10-step Adjustment Function

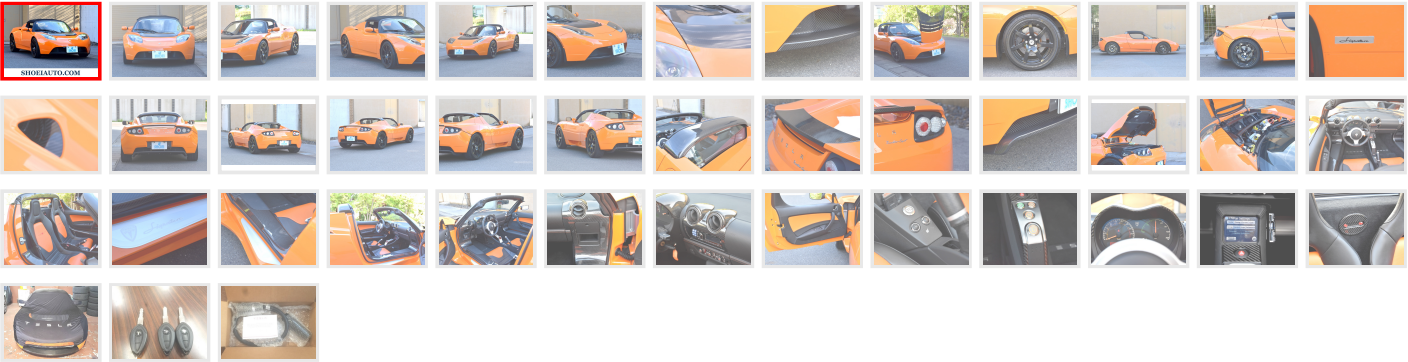
- Locking Wheel Lug Nut
- Three Spokes, Leather Upholstery Sports steering wheel
- Body information touch panel
- Retractable cup holder
- Floor mat
- 4 sensor, 4 channel anti-lock brake system (ABS)
- Front and rear crushable zone
- Side impact absorption door beam
- Traction control system
- Tire pressure monitoring system
- Emergency Tire inflator, puncture repair agent
- Front air bar for driver and front passenger



EV boasts a performance comparable to super car (electric vehicles), Tesla Roadster goods receipt!

The acceleration forces are fiercely, reaching the speed of about 100km / h in just 3.7s.

SHOEIAUTO.COM



vehicle inspection	None	Guarantee 1	-
Mileage	4,500km	Guarantee 2	-
Repair history	None	Recycle status	Re-separated (tax exempt)
Regular maintenance	When delivered (not included in the price)	Maintenance notebook	Yes
Maintenance cost	102,000 yen (tax included)	Car history	Private
Notices	Included <ul style="list-style-type: none"><li>■TESLA Owner's Manual</li><li>■Warranty Guide</li><li>■Charging Cable 100V 200V</li><li>■J1772 Connector</li><li>■Genuine Body Cover</li><li>■Maintenance Record Book</li><li>■3 Keys</li></ul>		

問合せ・見積依頼

印刷

ローンシミュレーション

詳細見積書

Equipment

full	CD	Keyless	ETC	Security	Fog lights	Airbag
Passenger airbag	Side airbag	ABS	Esc	Genuine Leather	Aluminum	Aero Parts
Left H	record book	Warranty	Maintenance notebook	instruction manual	Regular import car	AT
Seat heater						
Motor output → 400Nm (40.8kgm)						

spec

Year (first registration year)	H22 June	Displacement	1,000cc/gasoline
shift	AT	Drive	2WD
type	Sports	shape	2 doors
Color	Berry orange	Interior color	Premium leather
Boarding capacity	2 people	Number of doors	2 doors
Manufacture name	Other America	Low emission certification level	-
Chassis number (last 3 digits)	*****806	Stock No	CH0000003044

Vehicle information of the same type

[See all vehicles of the same type](#) [See all vehicles](#)



Ferrari 599 GTB Fiorano

Year: February 2019  
Run: 46,000 km  
11,500,000 yen

## Distributor information

問合せ・見積依頼

<b>Distributor name</b>	Shoei Japan Co., Ltd.
<b>Street address</b>	5-19 Mori 5-chome, Ama City, Aichi Prefecture, 490-1107
<b>TEL</b>	052-444-9987
<b>FAX</b>	052-444-9968
<b>Regular holiday</b>	Monday
<b>business hours</b>	am9:00~pm7:30
<b>access</b>	Name bicyclic (formerly Tomei BanMichi) Kiyosu 5 minutes from the west IC 6 minutes from Jimokuji north IC

[<< Return to vehicle list](#)[△ Return to TOP of this page](#)