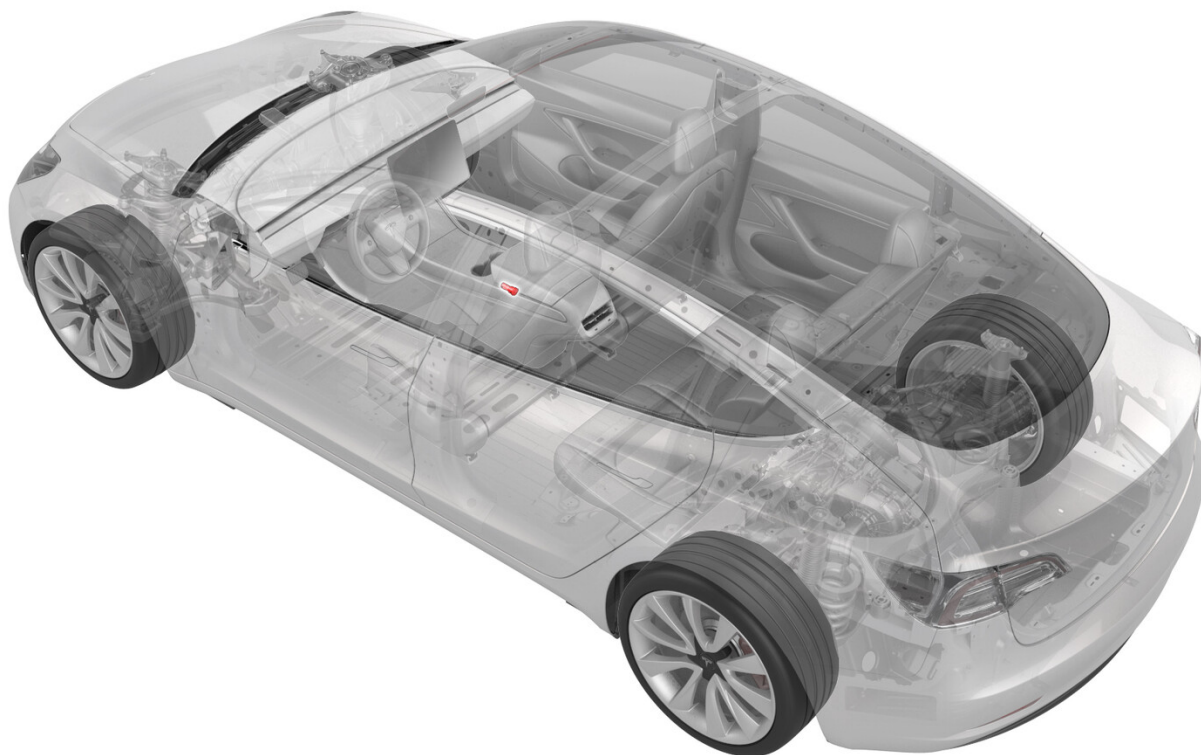


Last modified: 11/06/2018 13:27:33

Power Socket 12V - Center Console (Remove and Replace)



Correction code 17303002

FRT 0.30

NOTE: Unless otherwise explicitly stated in the procedure, the above correction code and FRT reflect all of the work required to perform this procedure, including the linked procedures. **Do not stack correction codes unless explicitly told to do so.**

NOTE: See [Flat Rate Times](#) to learn more about FRTs and how they are created. To provide feedback on FRT values, email LaborTimeFeedback@tesla.com.

NOTE: See [Personal Protection](#) to make sure wearing proper PPE when performing the below procedure.

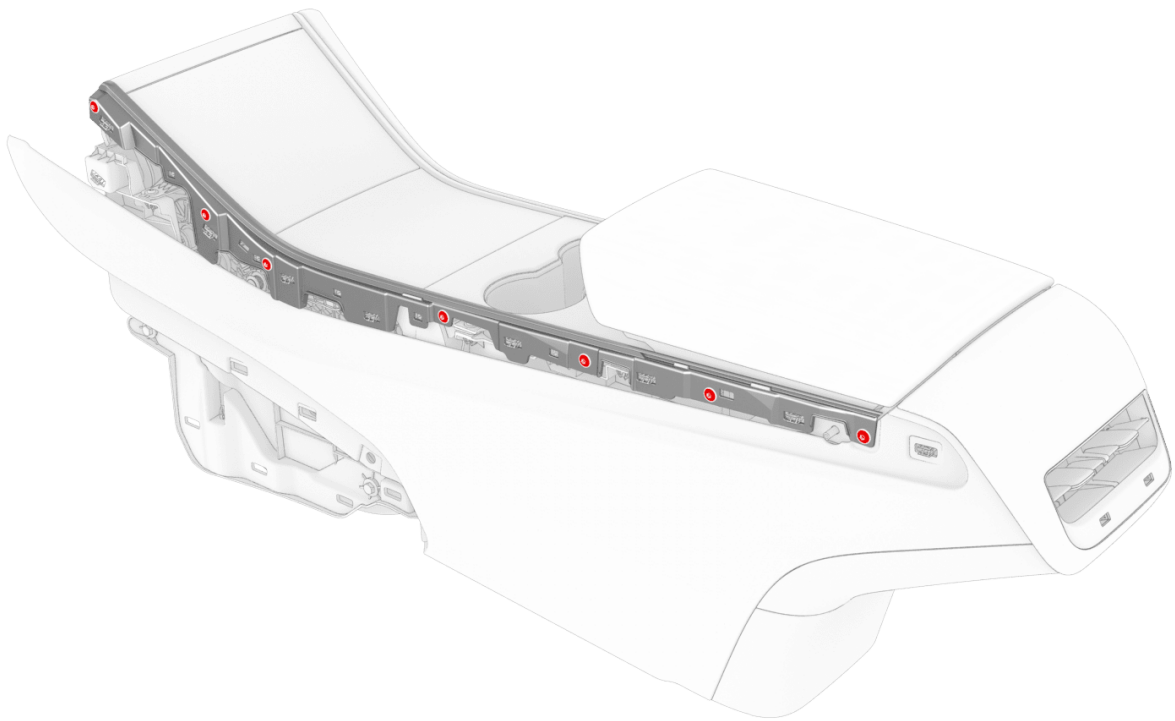
Remove

1. Disconnect 12V power. See [12V/LV Power \(Disconnect and Connect\)](#) ○ .
2. Remove the center console decor trim. See [Decor Trim - Center Console - LH \(Remove and Replace\)](#) ○ .

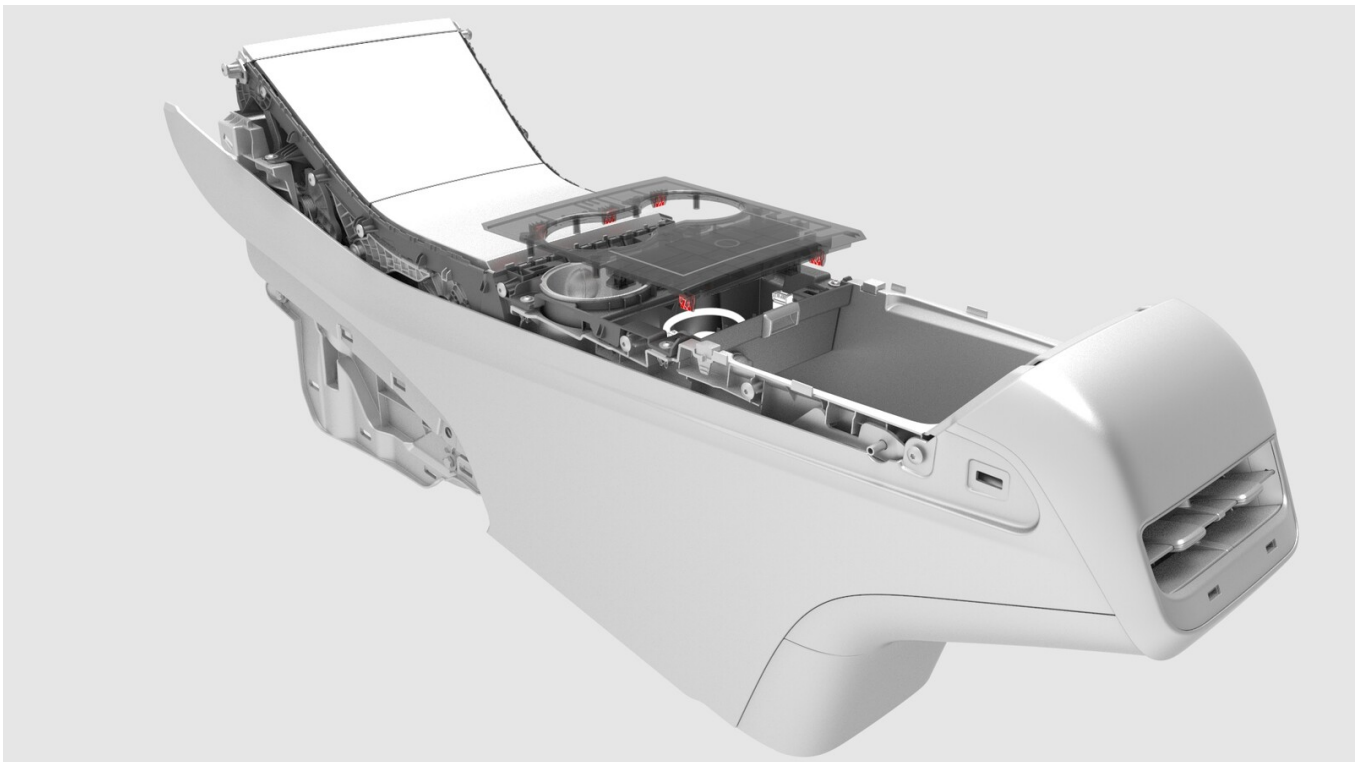
3. Remove the screws and release the tabs that attach LH and RH bright strips to the center console, and then remove the strips from the console.



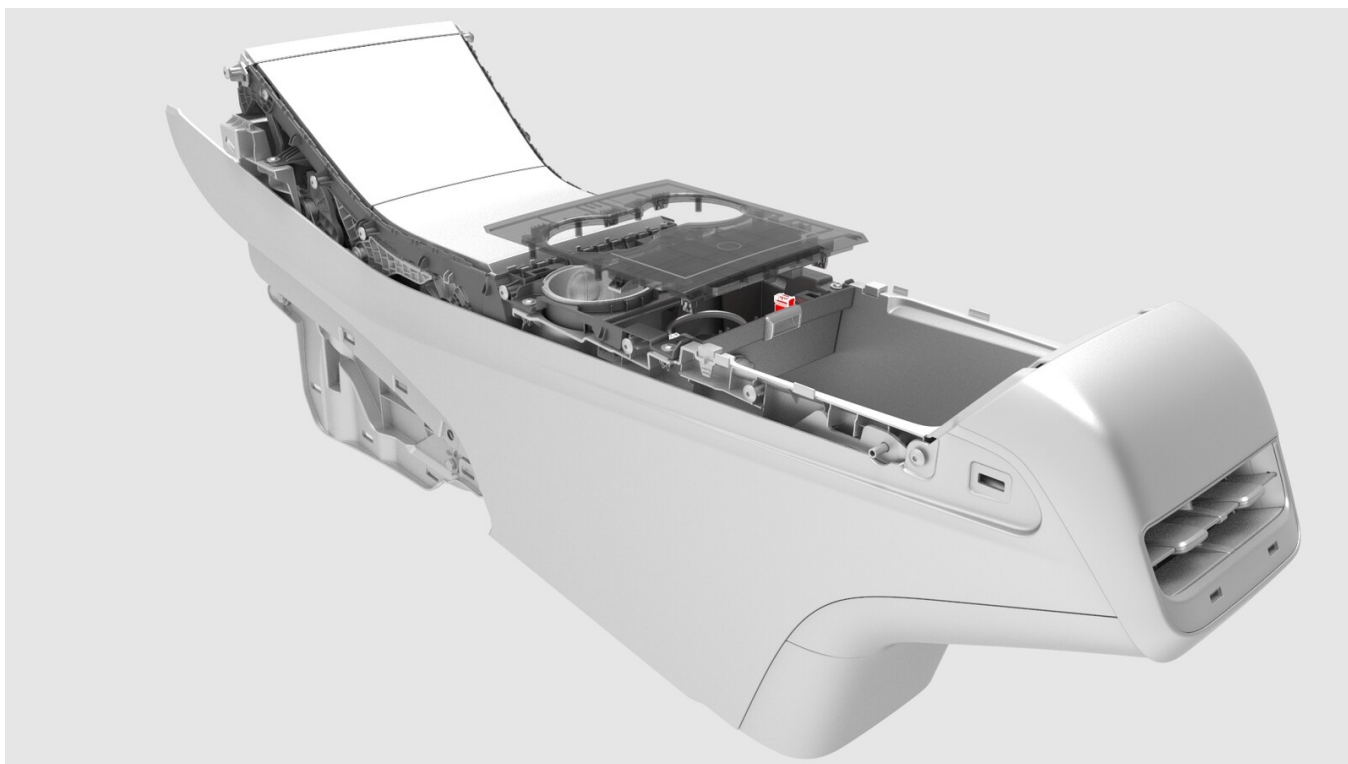
1.6 Nm (1.2 lbs-ft)



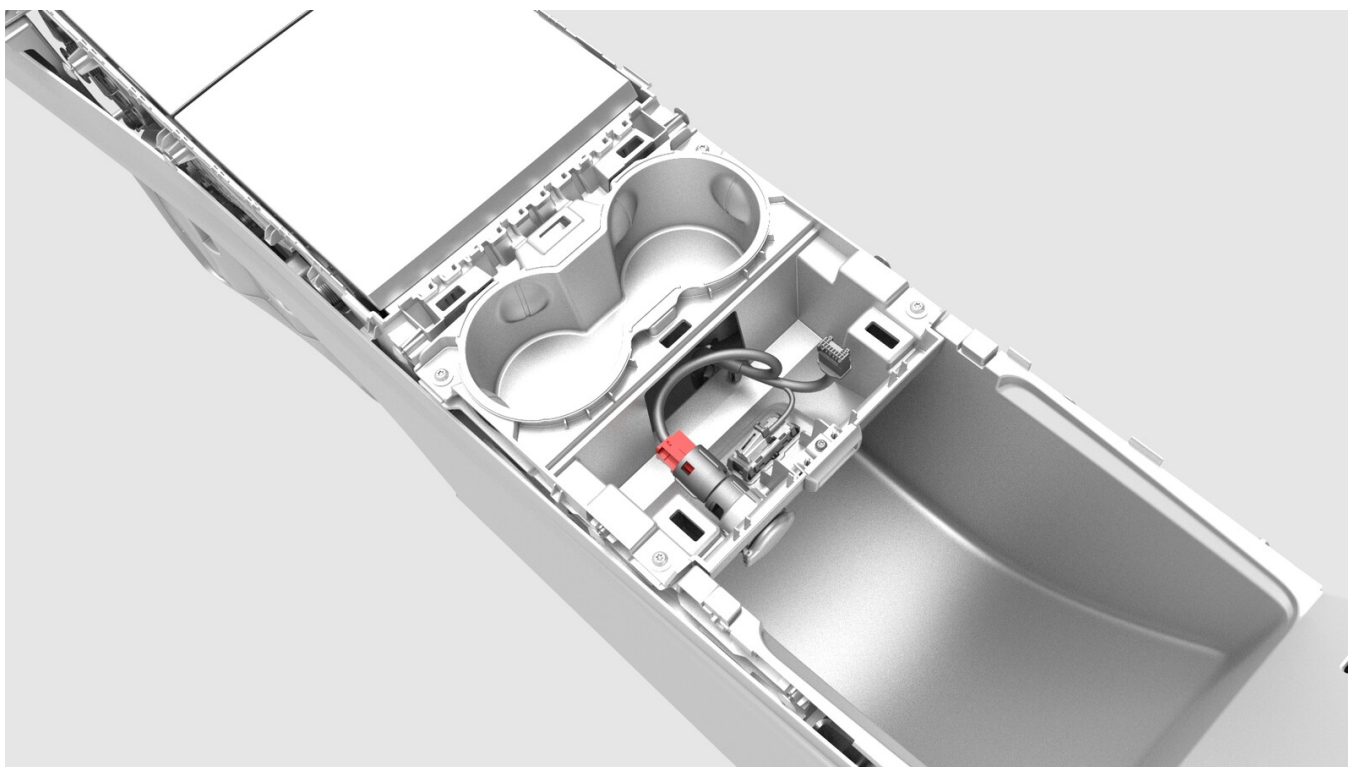
4. Open the armrest.
5. Release the clips (x6) that attach the cupholder decor trim to the cupholder assembly, and then separate the trim from the center console assembly.



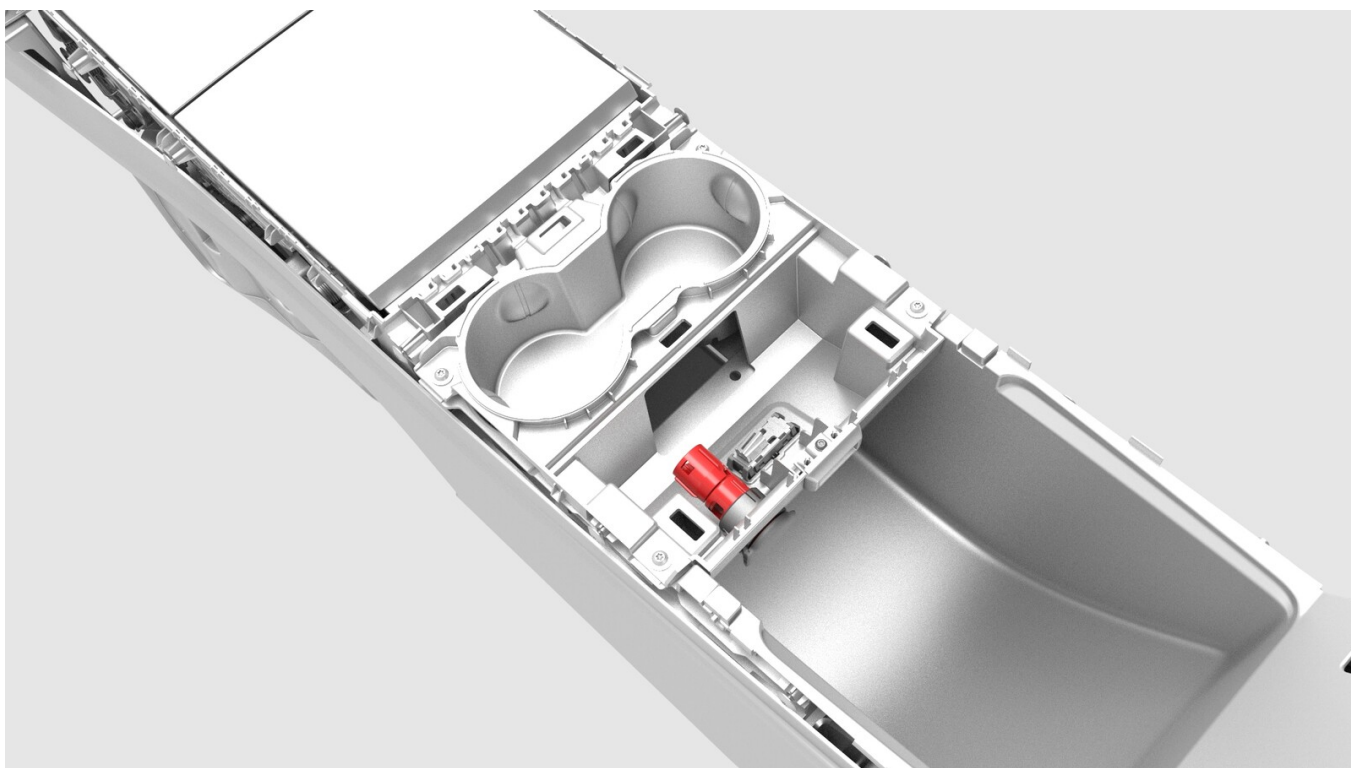
6. Disconnect the electrical harness from the security body controller module connector, and then remove the trim from the vehicle.



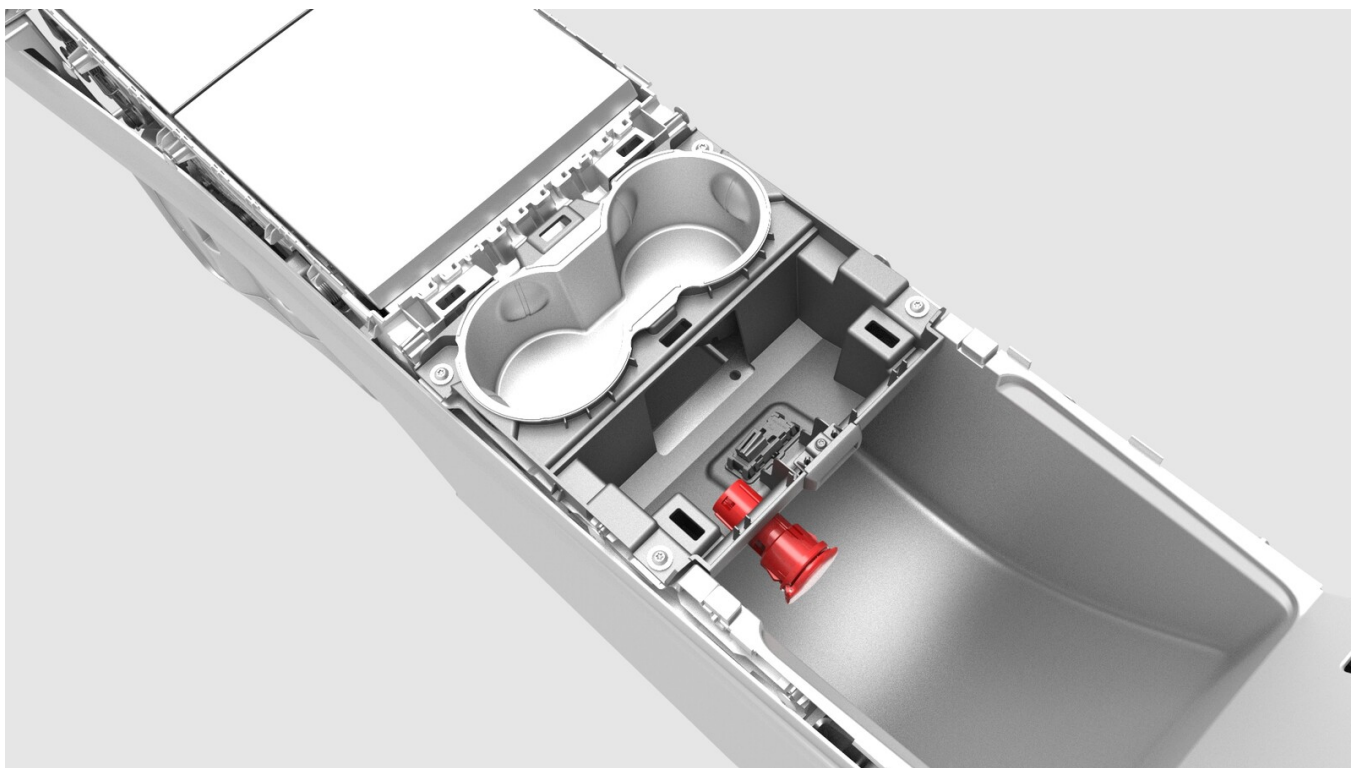
7. Disconnect the electrical harness from the center console power socket connector.



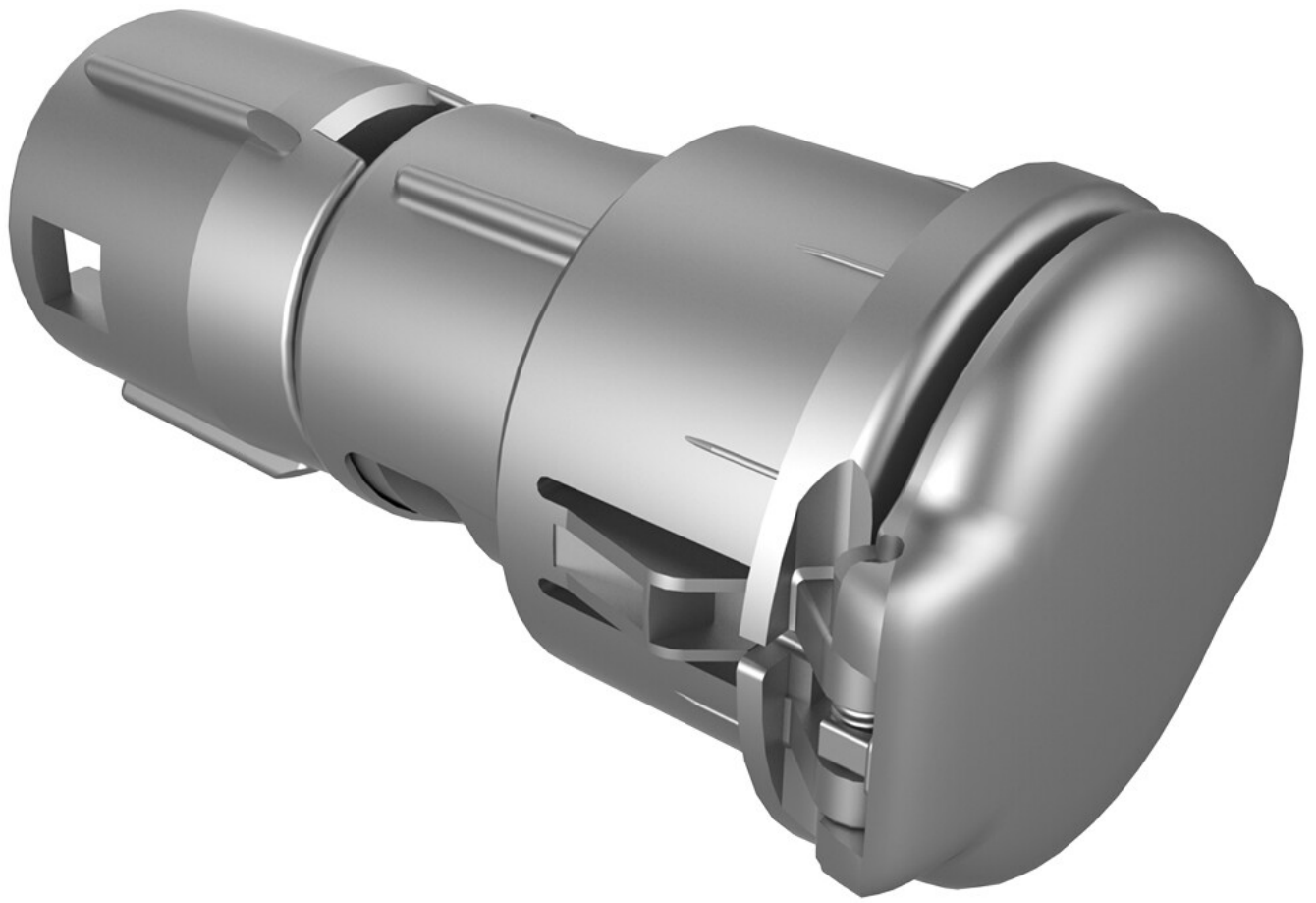
8. Release the small tabs on the spring cap and slide the power socket inside the cap, so that the openings in the side of the socket align with the large tabs of the cap.



- 9.** Release the tabs of the cap and move the power socket and cap together out through the cupholder assembly.



- 10.** Separate the power socket from the cap.



Install

Installation procedure is the reverse of removal.