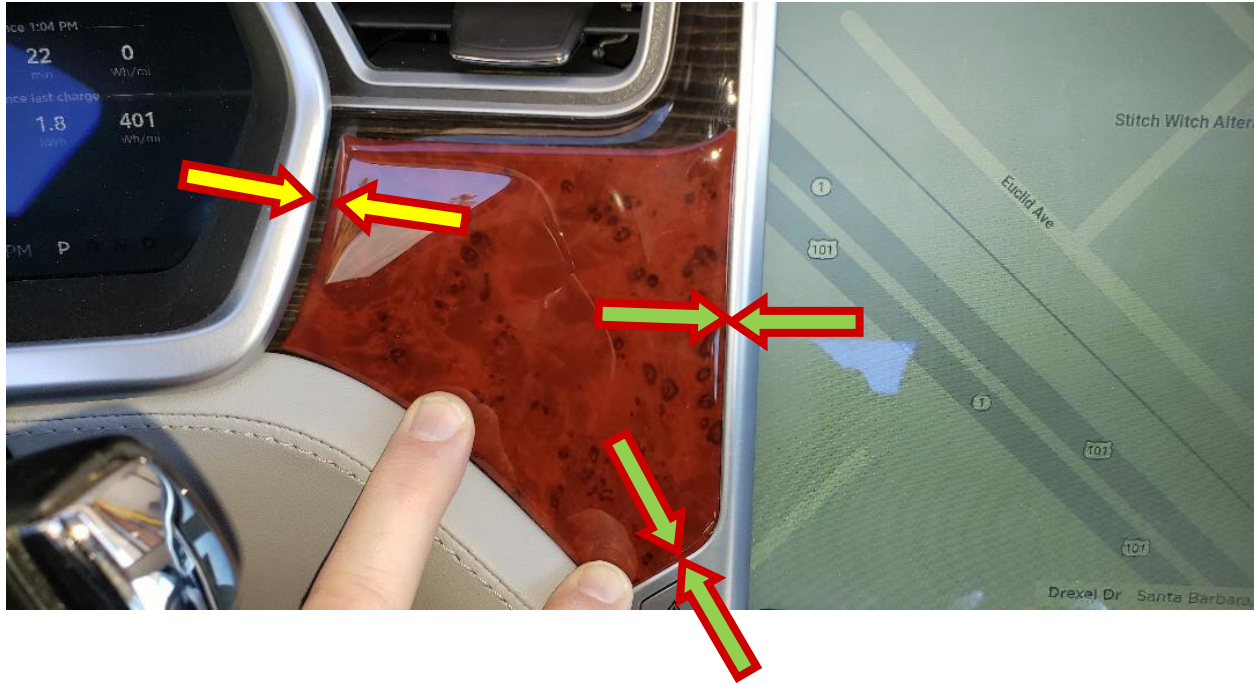
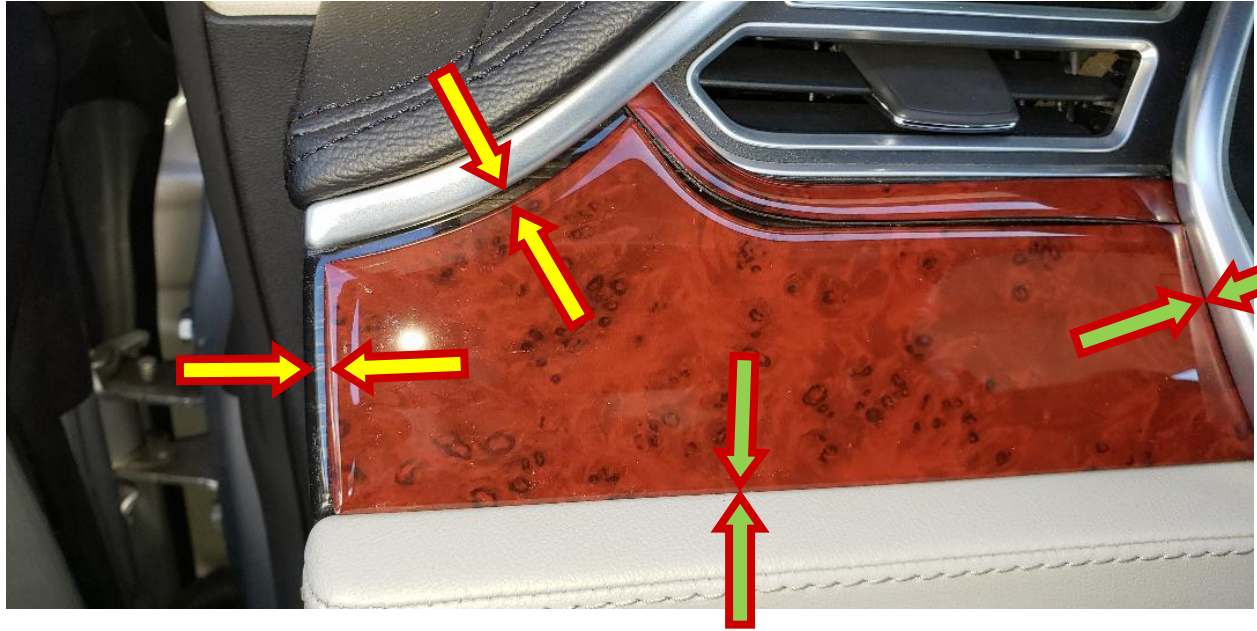


Green arrows – flush fit

Yellow arrows 3-5 mm gap!





If I move the cover to the left to make it fit (almost) on the left end, the right end and bottom have a gap. Maybe good enough if you were covering plain plastic, but changing the color and grain of existing wood – NO GOOD!

BTW, the extra fill pieces such as seen immediately above, do not fit well, either. Most are too narrow to cover existing wood (and do not butt cleanly – looks cheap).