

Solar

Quantity: 48 Panels

System Size: 16.32 kW

Est. Annual Production: 16520 kWh

Powerwall

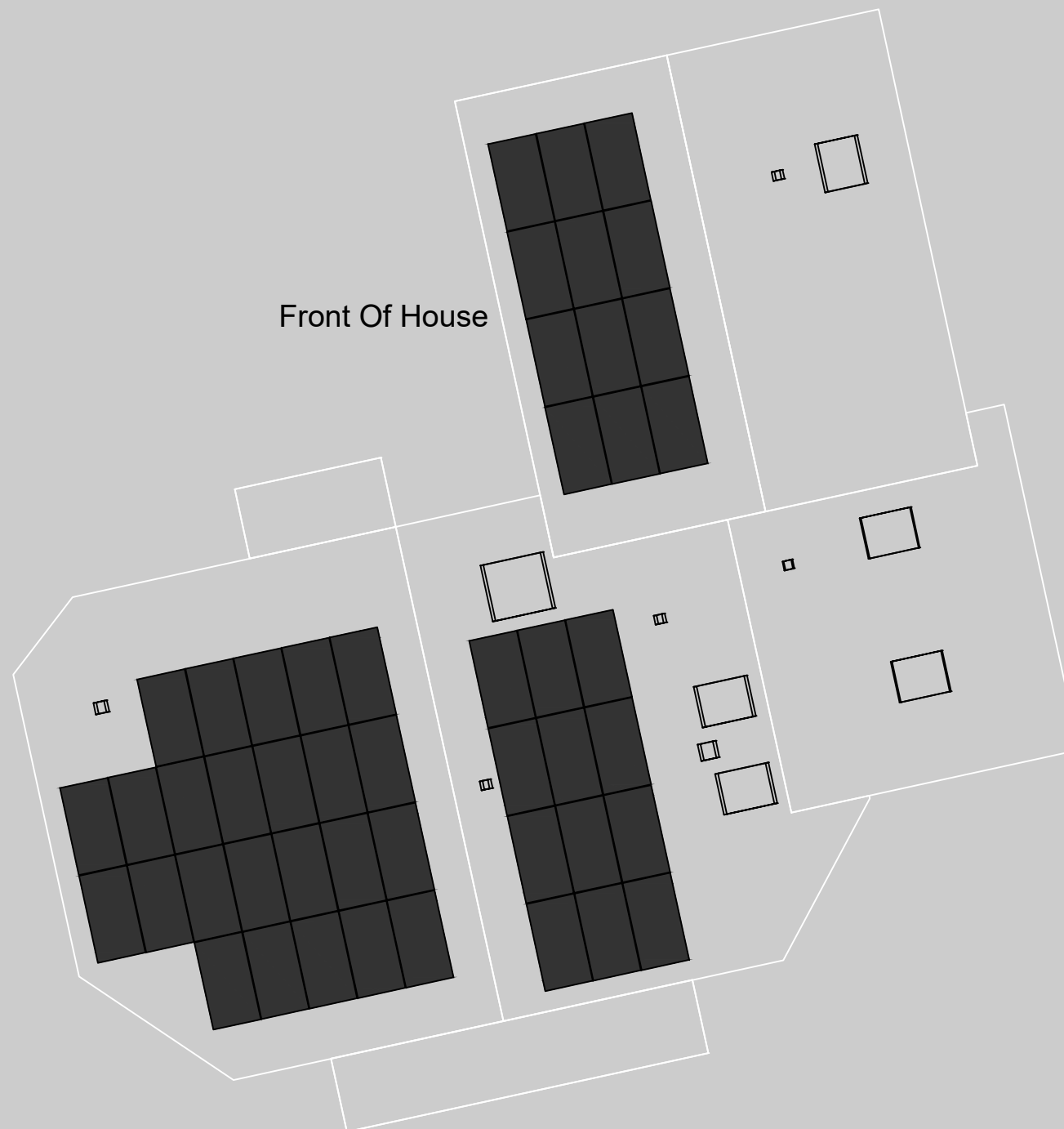
Quantity: 3 Powerwalls

Backup Type: Whole Home

Equipment Location

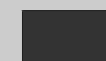
Your solar inverter(s), Energy Gateway, Powerwall(s) and any additional equipment will be installed near your utility electric meter.

At the beginning of installation, the Tesla crew lead will discuss with you the exact location based on your preference and install feasibility.



LEGEND

Solar Panels



Rooftop vents, skylights, chimneys, and HVAC

