

# Exterior

## Paint Issues

1. Hood – Passenger Side



2. Hood – Above Passenger Side Head Light

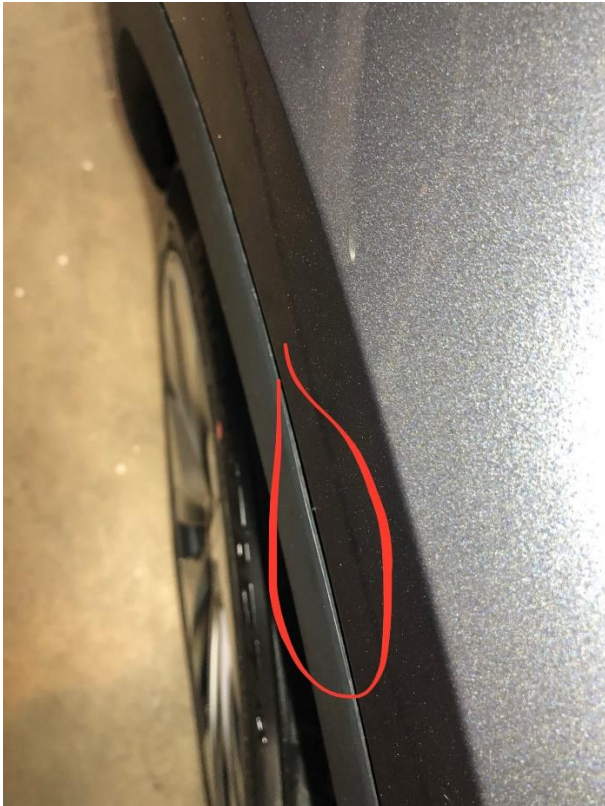


### 3. Passenger Side Mirror



## Alignment/Fit and Finish

### 4. Wheel Trim Not Flush on all 4 Sides



5. Passenger Side Camera Loose



6. Rear Drive Side Door Weather Stripping Cut in multiple places





7. Passenger Side Tail Light Alignment



8. Rear Driver Side Door/Trim Alignment



9. Rear Hatch Alignment



#### 10. Rear Bumper Alignment



11. Front Driver and Passenger Door Bottom Alignment





