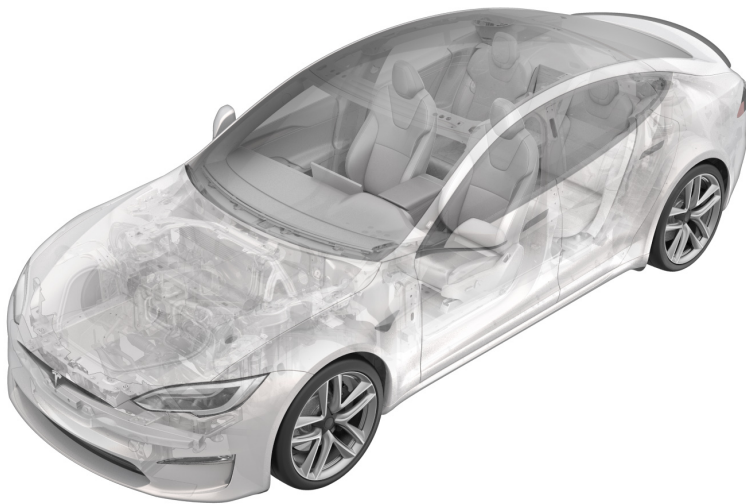


Last modified: 17/06/2022 13:38:18

USB Hub - Center Console - Front (Remove and Replace)



Correction code 21260402

FRT 0.12

NOTE: Unless otherwise explicitly stated in the procedure, the above correction code and FRT reflect all of the work required to perform this procedure, including the linked procedures. **Do not stack correction codes unless explicitly told to do so.**

NOTE: See [Flat Rate Times](#) to learn more about FRTs and how they are created. To provide feedback on FRT values, email LaborTimeFeedback@tesla.com.

NOTE: See [Personal Protection](#) to make sure proper PPE is worn when performing the below procedure.

Remove

1. Open the RH front door and lower the RH front window.
2. Move the front passenger seat rearward.
3. Fully retract the center console lid, cupholder and sliding tray into the locked position.





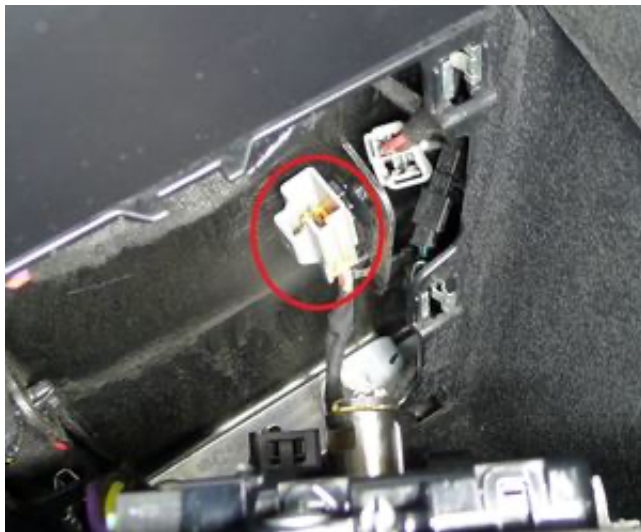
4. Use a 90 degree plastic trim tool to release the clips (x4) that attach the center console service panel to the center console, and then pull the panel upward to access the harness.





5. Disconnect the center console service panel electrical connectors (x3), and then remove the assembly from the center console.





6. Remove the screws (x3) that attach the front USB hub to the service panel assembly.



1.5 Nm (1.1 lbs-ft)

Tip: Use of the following tool(s) is recommended:

- T20 socket



Install

1. Position the front USB hub onto the service panel assembly, and then install the screws (x3) that attach the hub to the assembly.



1.5 Nm (1.1 lbs-ft)



Note

Use the alignment tabs to ensure the USB hub is correctly positioned.

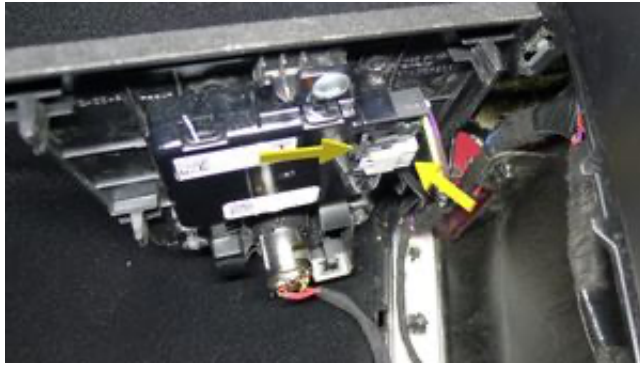
Tip: Use of the following tool(s) is recommended:

- T20 socket



2. Position the center console service panel assembly into the center console, and then connect the electrical connectors (x3).



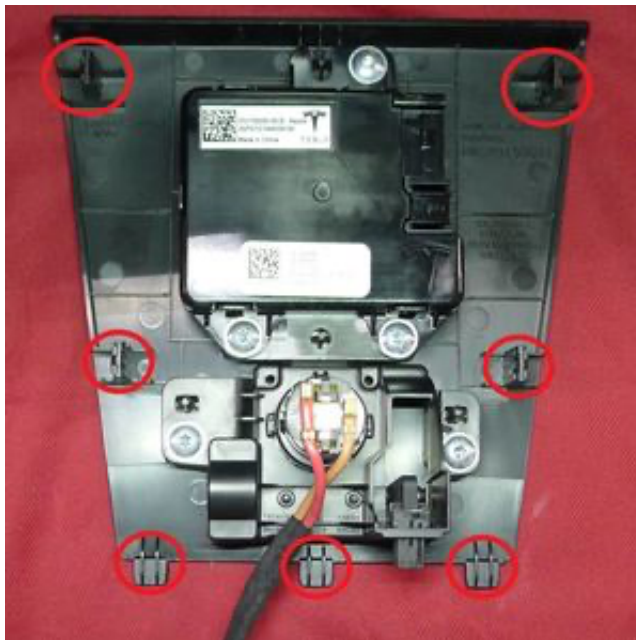


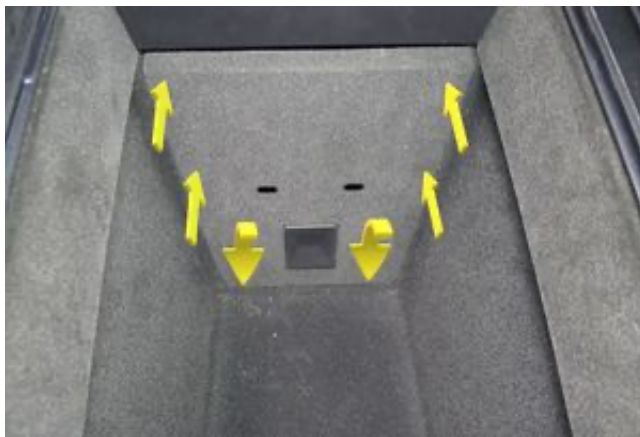
3. Secure the alignment tabs at the bottom of the center console service panel assembly to the center console, and then secure the clips (x4) that attach the assembly to the center console.



Note

Ensure connector X1131 and X881 is positioned to the right of the main harness for USB hub clearance.





4. Close the center console lid, cupholder and sliding tray.
5. Move the RH front seat to the original position.
6. Raise the RH front window and close the RH front door.